

UTILITY TREE TIPS

Know tree dimensions at maturity



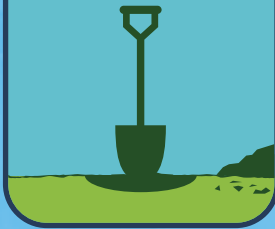
Plant deciduous trees on SW or SE side of home for summer shade & winter sun



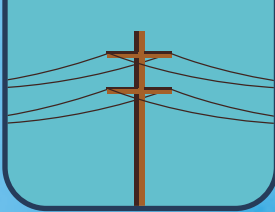
Plant evergreens to block winter winds



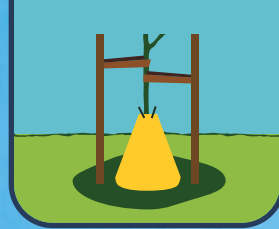
Call 811 before you dig!



Avoid planting under power lines



Watering bags help save water



Water in early mornings or late evenings



WASHINGTON STATE DEPARTMENT OF
Natural Resources



*For more information visit
MyTPU.org/ShadeTrees*

Skip the AC

PLANT A TREE



Did you know trees can cool temperatures by 2°-9°F during the hot summer months (source: EPA)? Strategically placed trees can keep you and your home cool and comfortable!

