

Water Service Area Adjustment

Ryan Cox, Asst Water Division Manager

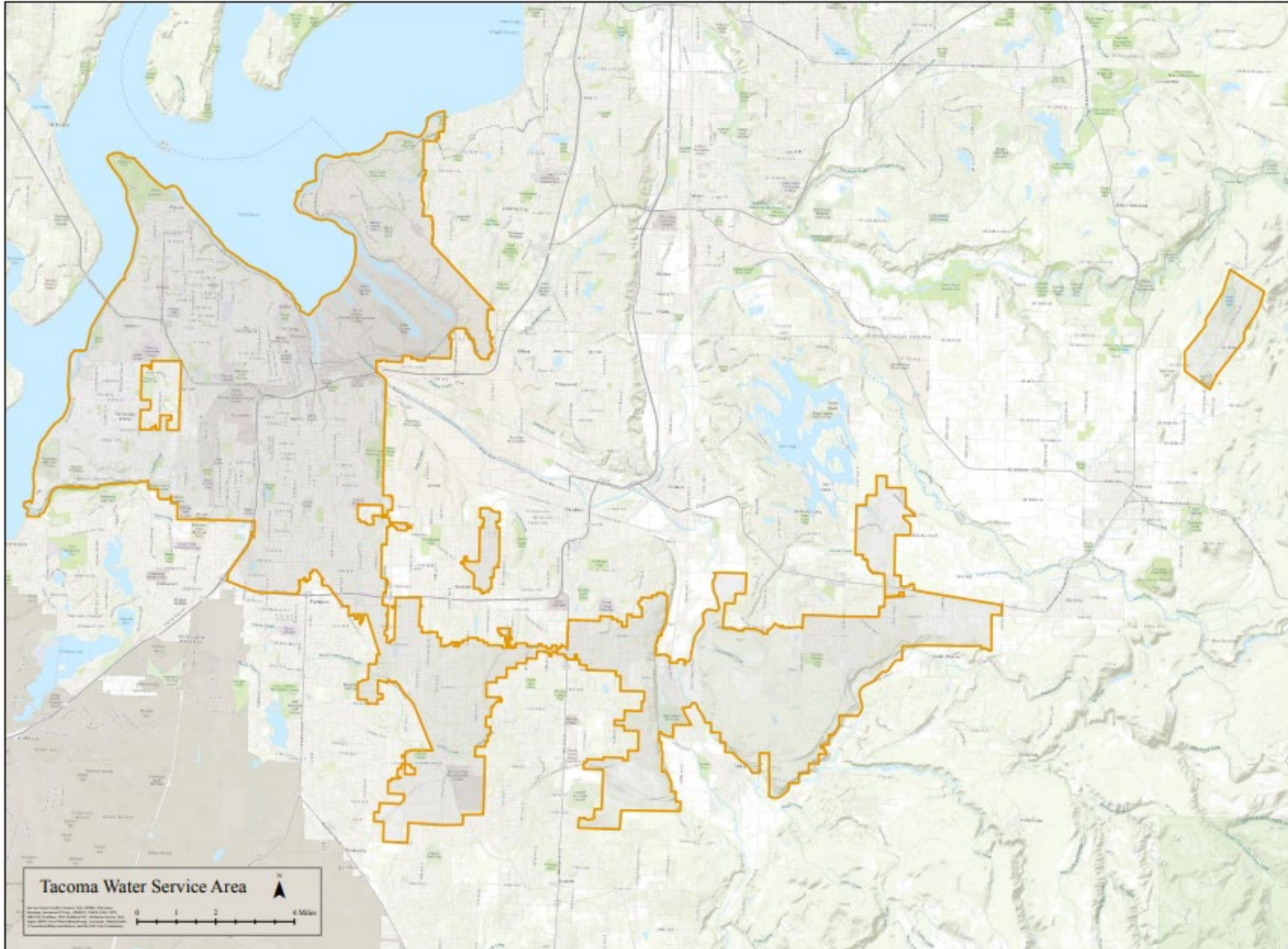
Goals

- 1) Review the background and references for Tacoma Water service area.
- 2) Make a proposal for a service area adjustment

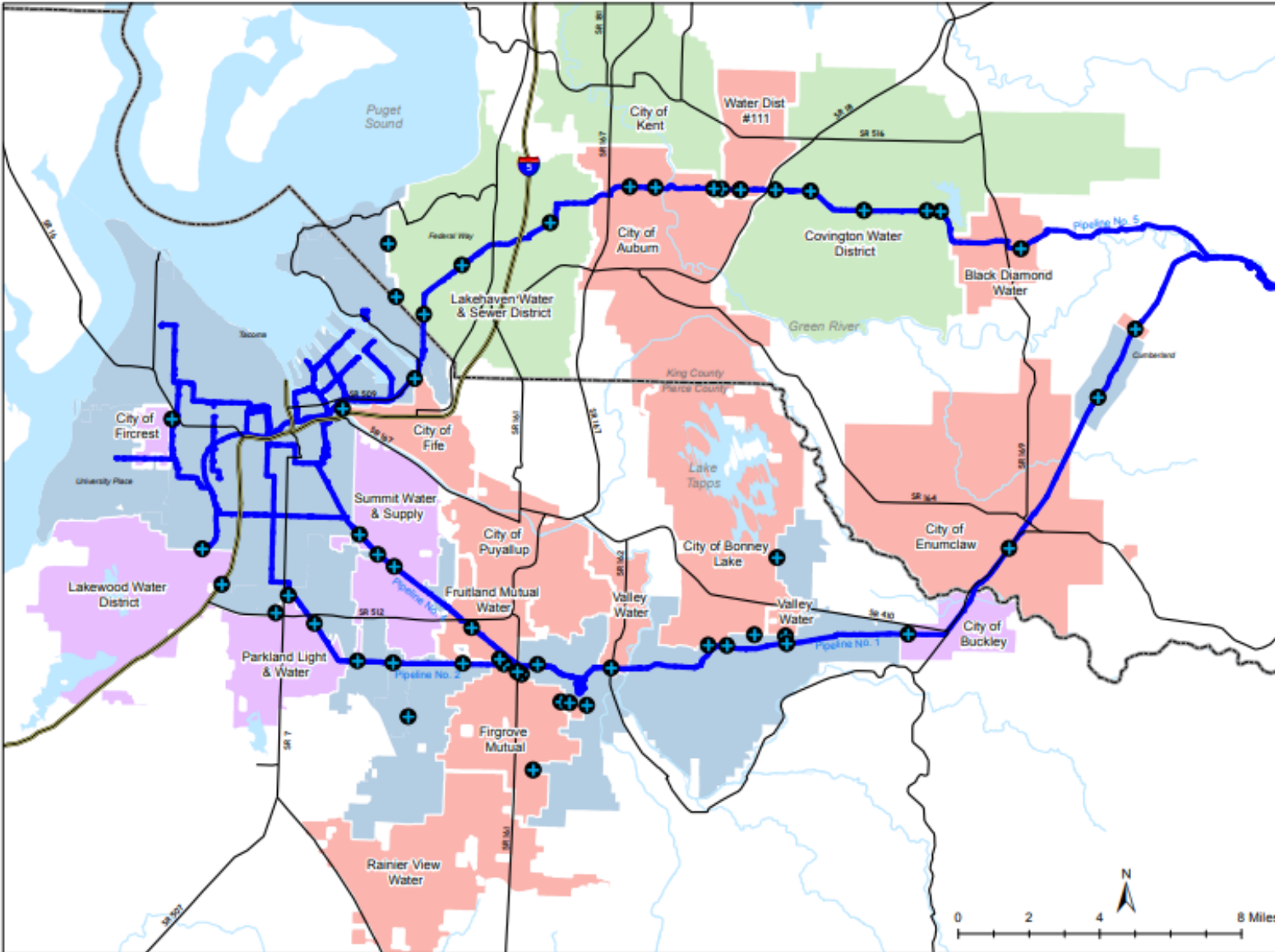
- **2.4 Service Area** Includes retail water service area
 - within the City of Tacoma,
 - unincorporated areas of Pierce and King County,
 - nearby jurisdictions (including Federal Way, Fircrest, University Place, Lakewood, Puyallup, Bonney Lake, and town of Ruston)
 - wholesale water service to other municipalities,
 - a Partner in the Second Supply Project (SSP),
 - since 2006, acquired Andrain Water system and Curran Road system

Water System Plan, Appendix M

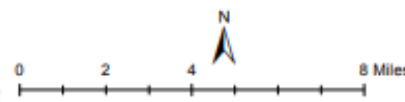
Water Service Area Map



Water System Plan, Figure 2-2 Tacoma Water Service Area



- Intertie Points
 - Transmission Lines
 - Tacoma Water Service Area
- Water Purveyor Relationship**
- Emergency
 - Partner
 - Wholesale



Group A public water system



- **Water Regulations, Chapter 3, 6.C.13., of the Tacoma-Pierce County Health Department Environmental Health Code,**
- “...if an existing lot of record or a proposed lot is... within the service area of a Group A public water system with the willingness and capacity to serve, then it may not use a well or establish a Group B water system as a water source”. Similarly, King County Code 13.24.138B. states “New development...must be served...By a Group A water system through direct service, if the proposed development is in an approved service area that has been assigned to a Group A water system.”

- **Duty to provide service requirement**

Municipal water suppliers have a duty to provide service to all new connections within their retail service area when the circumstances meet the following four threshold factors:*

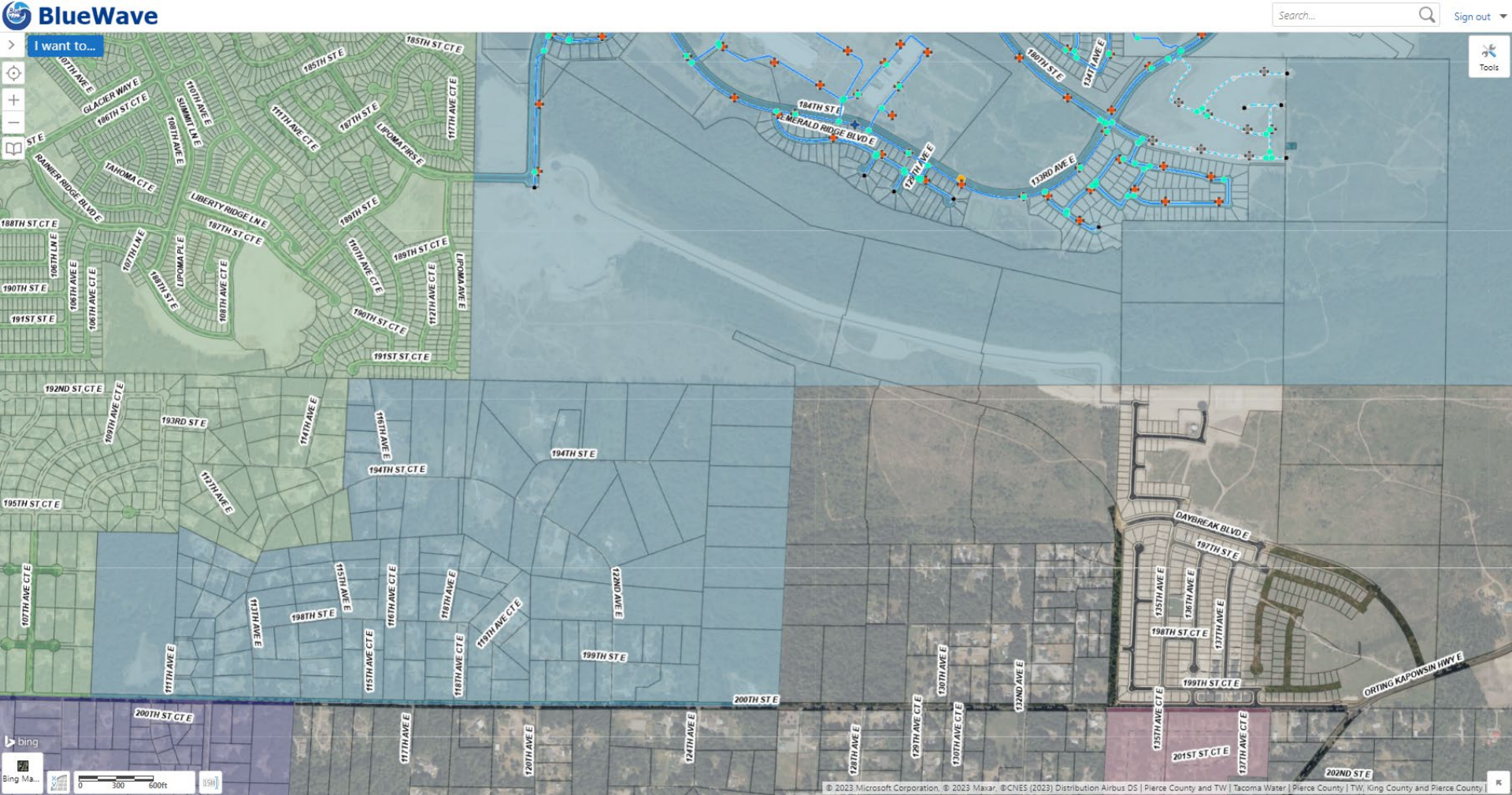
1. The municipal water supplier has sufficient **capacity** to serve water in a safe and reliable manner.
2. The service request is **consistent** with adopted local plans and development regulations.
3. The municipal water supplier has sufficient **water rights** to provide service.
4. The municipal water supplier can provide service in a **timely and reasonable** manner.

* RCW 43.20.260 *Review of water system plan, requirements – Municipal water suppliers, retail service*

- **Pierce County Coordinated Water System Plan**
 - **5.2.1 Definition of “Timely Service”**
 - Receiving a commitment to provide service, or the reaching of agreement with the potential customer, within 120 days of request for water service. The 120-day period shall be defined as calendar days. The 120-day clock shall commence at the filing of a written application, payment of fees, or request by the applicant to the purveyor. The 120-day standard does not apply to the provision of service.
 - Planning, design, contracting, and construction of new development and associated water service connections often require more than 120 days for completion.

- **Pierce County Coordinated Water System Plan**
 - **5.2.1 Definition of “Reasonable Service”**
 - The provision of potable water service and/or associated water utility services that are consistent with the conditions of service policies detailed in the utility’s DOH-approved water system plan or small water system management plan and bylaws.
 - There is additional guidance that individual utilities may consider in development of their own definition of “reasonable service,” based on criteria informed by applicable DOH policies and best utility management practices.

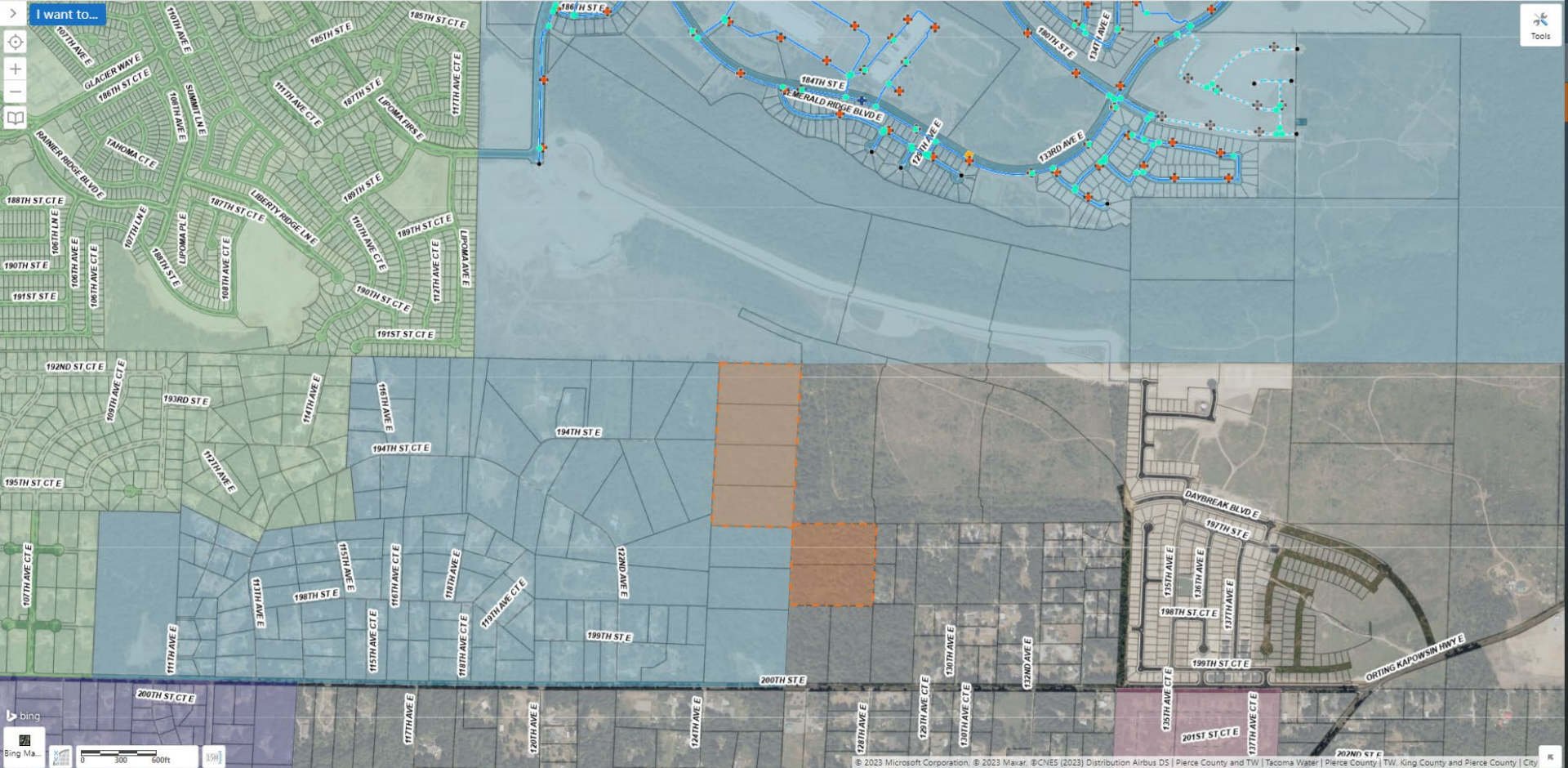
Hidden Hollow Residential Plat Development



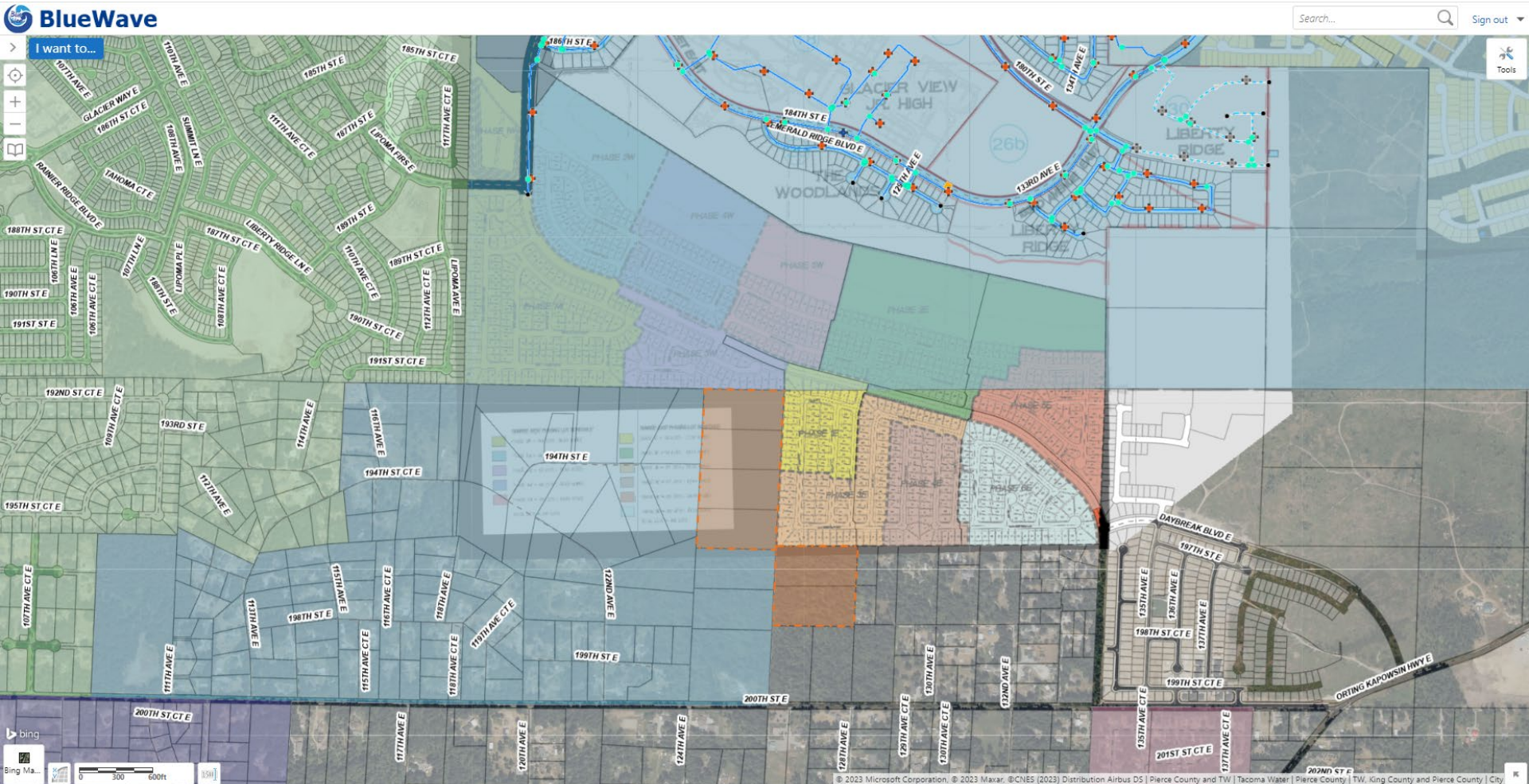
Hidden Hollow Residential Plat Development

BlueWave

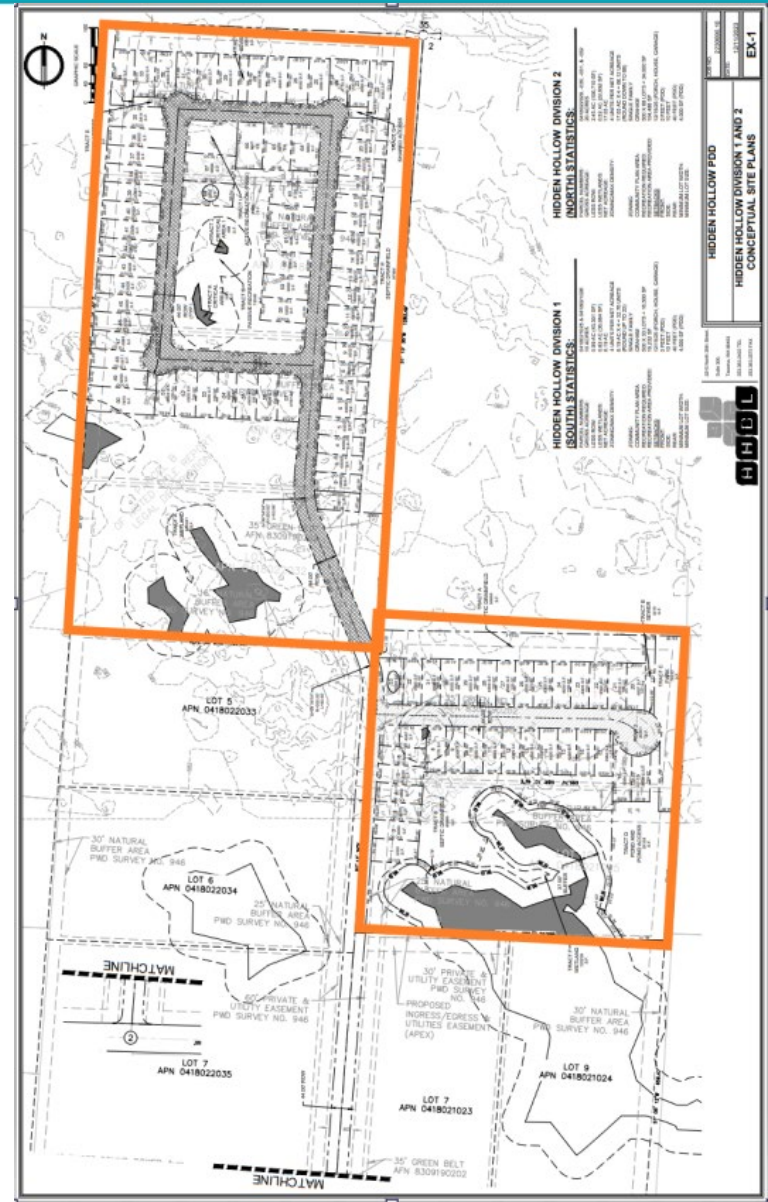
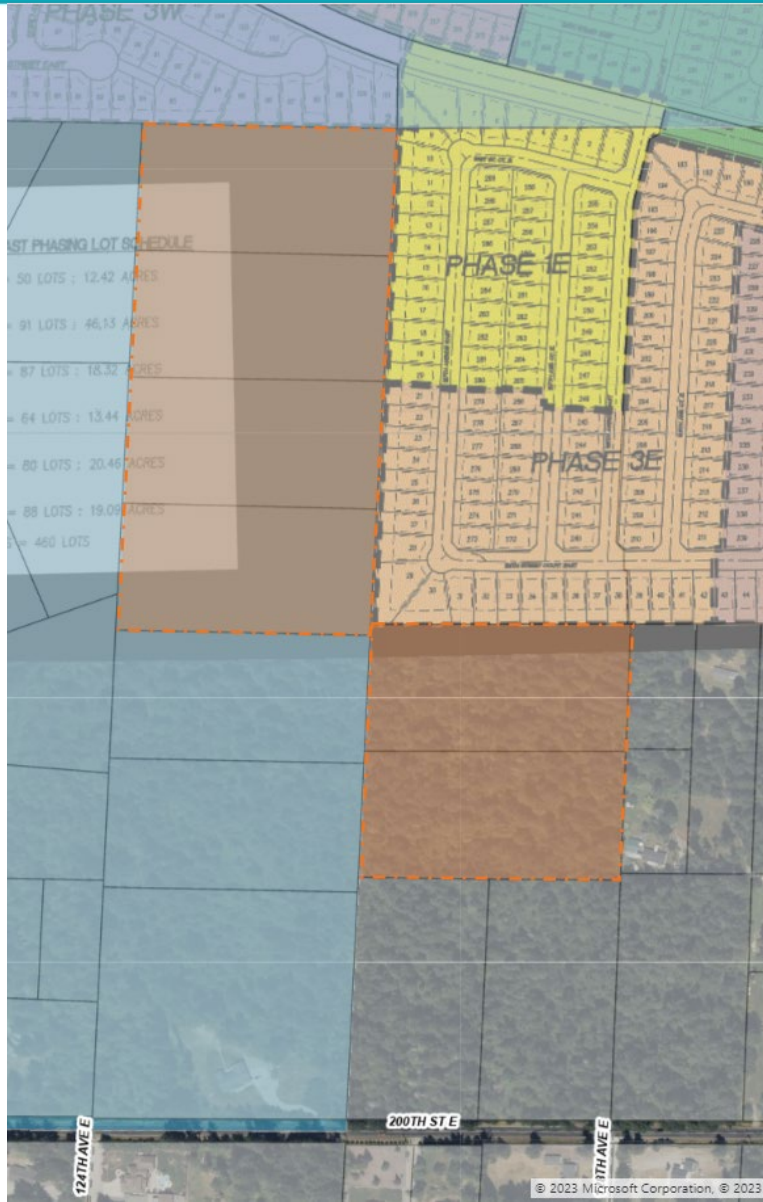
Search... Sign out



Hidden Hollow Residential Plat Development



Hidden Hollow Conceptual Site Plan



PROJECT: HIDDEN HOLLOW FDD
DIVISION: HIDDEN HOLLOW DIVISION 1 AND 2
DRAWING: CONCEPTUAL SITE PLANS
DATE: 11/15/2023
SCALE: AS SHOWN
EX-1

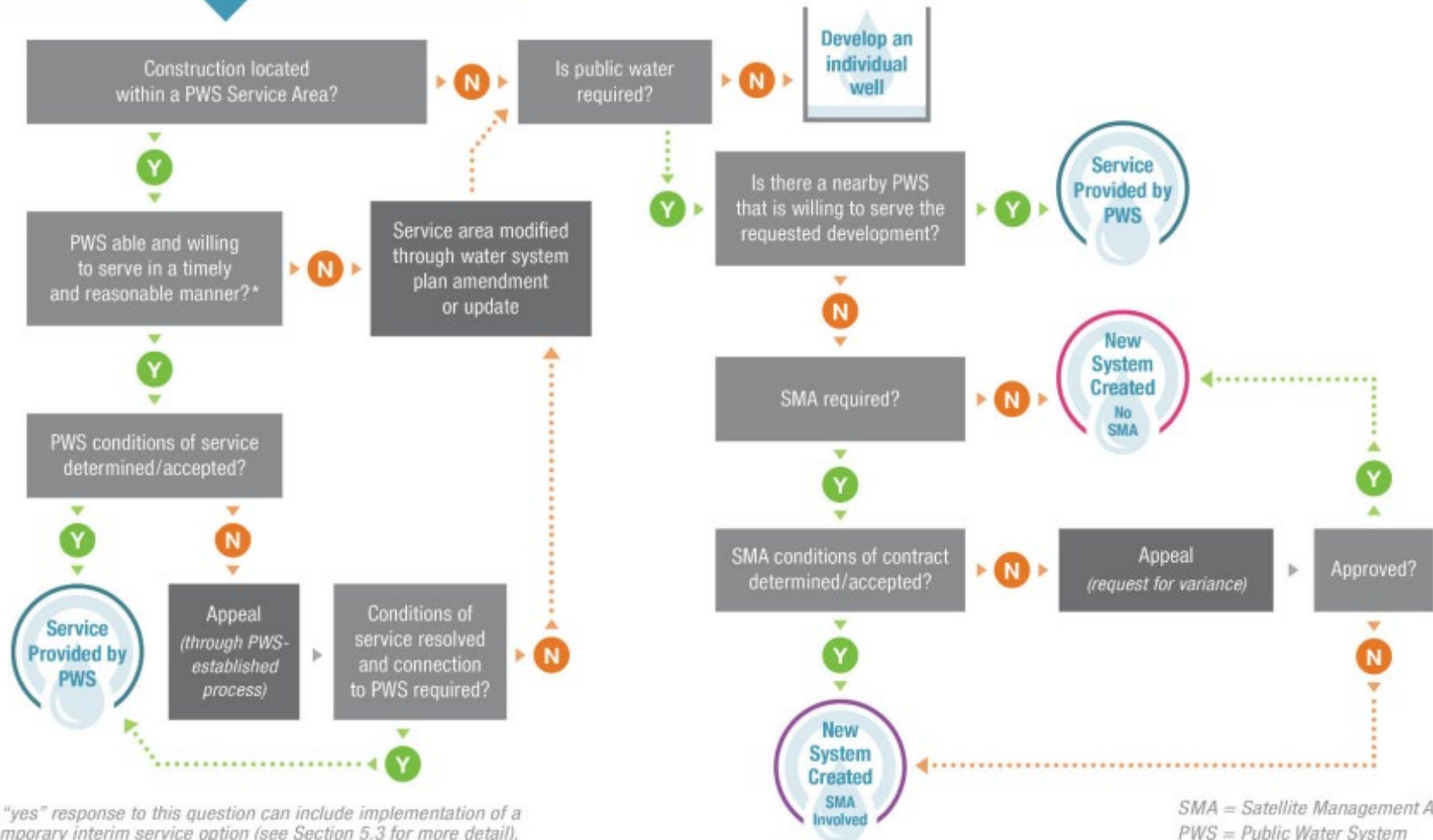


Utility Service Review Procedure, Fig 5-1 Pierce County CWSP



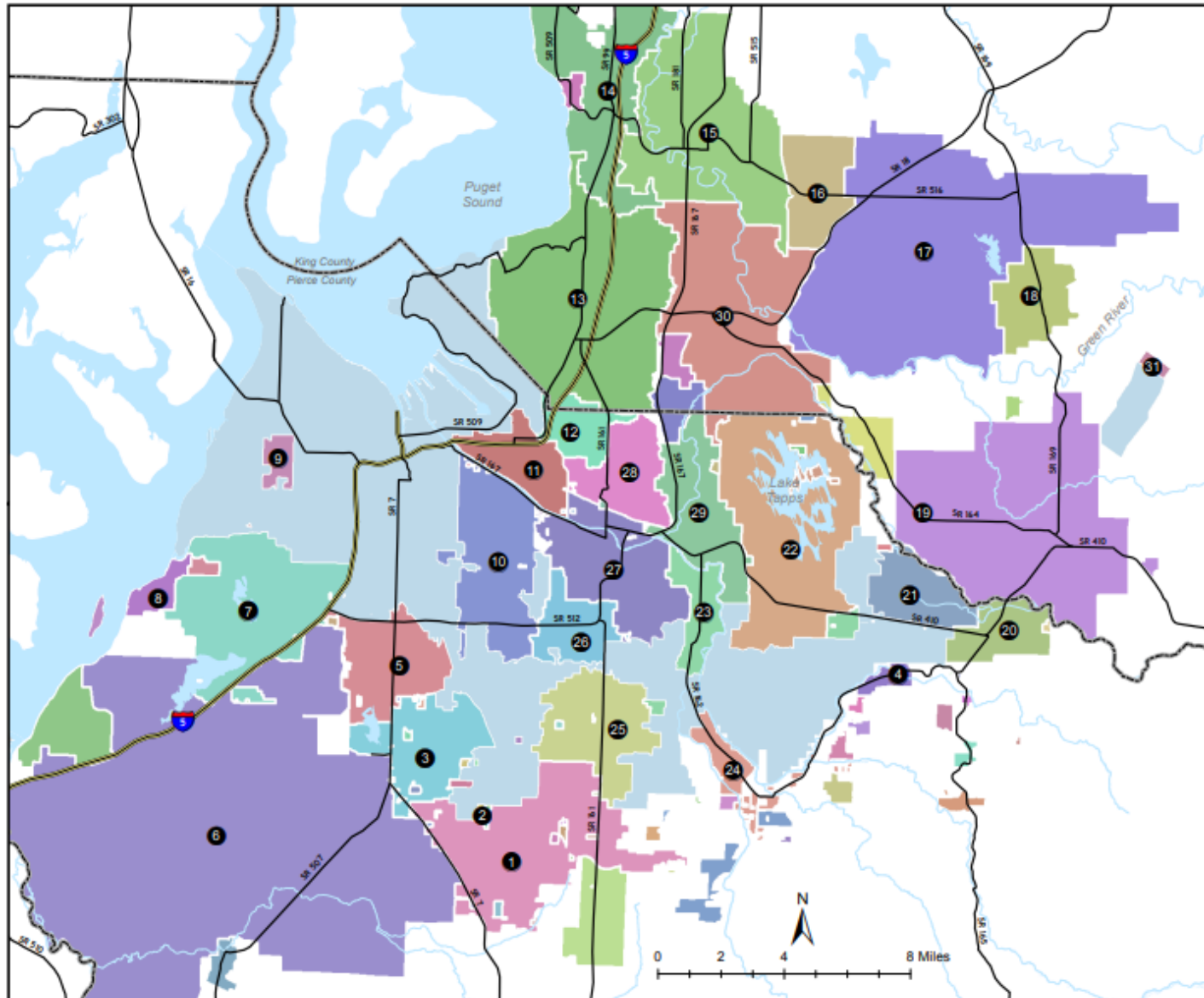
UTILITY SERVICE REVIEW PROCEDURE

New Construction Proposed Requiring Water Supply

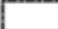
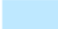
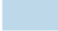


* A "yes" response to this question can include implementation of a temporary interim service option (see Section 5.3 for more detail).

Water System Plan, Figure 2-3 Adjustment Water Systems

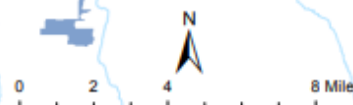


LEGEND

-  County Boundaries
-  Bodies of Water
-  Retail Service Area

Adjacent Water Systems

- 1 Rainier View Water
- 2 Bethel Water Company
- 3 Spanaway Water System
- 4 South Prairie
- 5 Parkland Light & Water
- 6 Joint Base Lewis McChord
- 7 Lakewood Water District
- 8 Town of Steilacoom
- 9 City of Fircrest
- 10 Summit Water & Supply
- 11 City of Fife
- 12 City of Milton
- 13 Lakehaven Water & Sewer District
- 14 Highline Water District
- 15 City of Kent
- 16 Water Dist #111
- 17 Covington Water District
- 18 Black Diamond Water
- 19 City of Enumclaw
- 20 City of Buckley
- 21 Marion Water
- 22 City of Bonney Lake
- 23 Valley Water
- 24 City of Orting
- 25 Firgrove Mutual
- 26 Fruitland Mutual Water
- 27 City of Puyallup
- 28 Mountain View-Edgewood Water
- 29 City of Sumner
- 30 City of Auburn
- 31 Cumberland Coop Water System



Options



(A) Temporary Interim Service Option

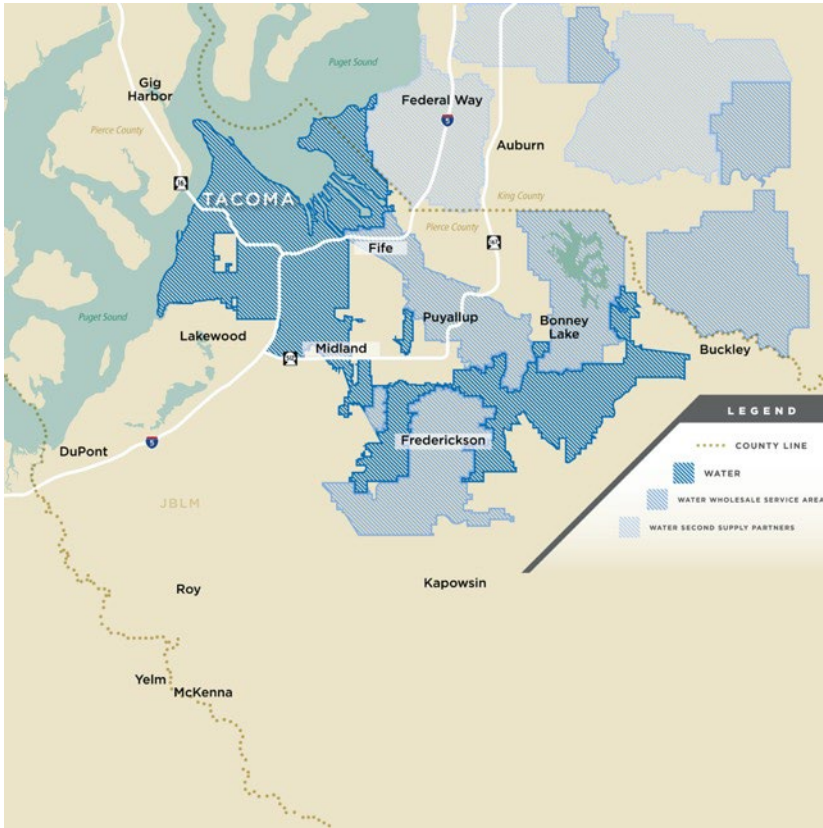
(B) Release the parcels and adjust the service area

Service Area Change Procedure



- **Pierce County Coordinated Water System Plan**
 - **3.7 Service Change Area Procedure.**
 - In cases where a water purveyor is transferring a small portion of its service area to another purveyor and the purveyor receiving said area has already demonstrated in its WSP or SWSMP that it has the capacity and ability to serve the area, then the purveyors are only required to amend their service area mapping and communicate the changes to Pierce County Public Works (PPW). The service area changes will then be documented in the County's GIS. The purveyors and PPW also sign new service area agreements that are kept on file at PPW. No WSP or SWSMP amendment or update is required solely to implement these types of minor service area changes, though they would ultimately be documented in subsequent WSP or SWSMP updates.
- **TPU PUB Approval + Washington Water UTC Approval**

Water Service Area Adjustment



- Any Questions?

Thank you!

Ryan Cox

Asst Water Division Manager

Customer Experience

rrcox@cityoftacoma.org