



Serving our customers

Segale Properties, Cumberland Aggregate Mine

Ryan Cox, P.E.

Customer Experience, Assistant Division Manager

Agenda

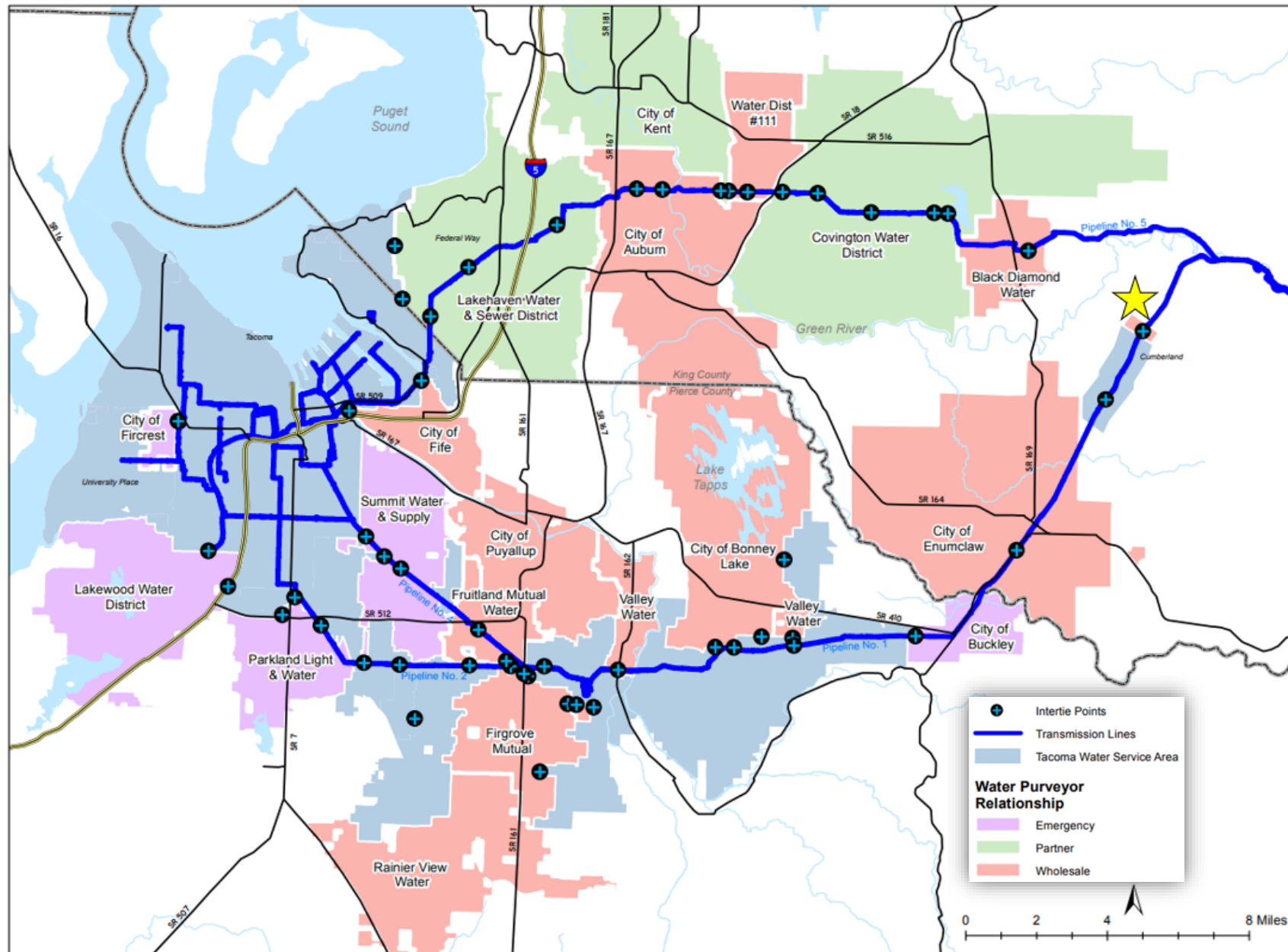
Project Overview
Water Service Assessment
Preliminary Options
Regulatory Steps
Timeline
Next Steps
Q&A

Why is Segale Requesting Water Service?

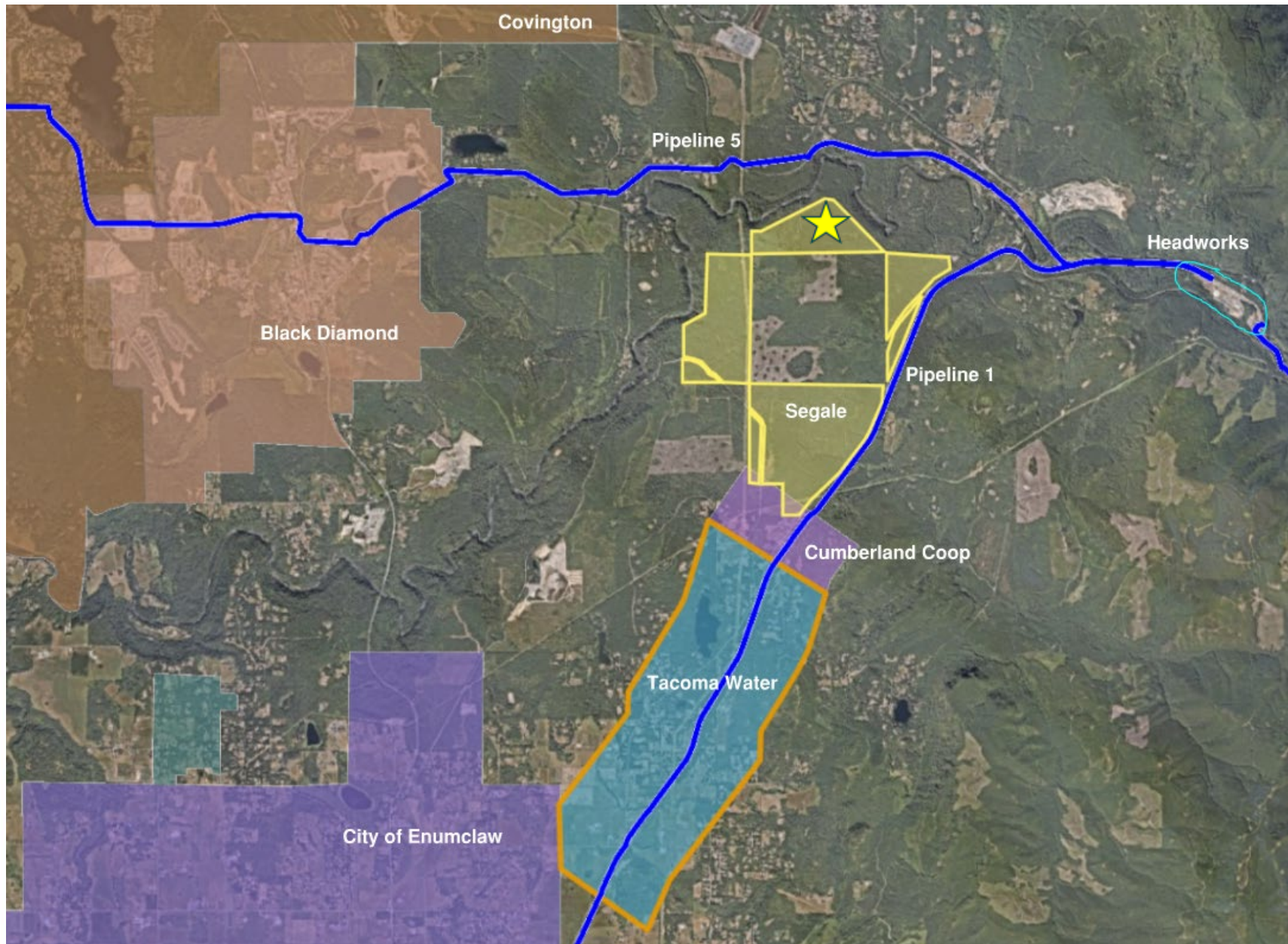
- Submitted an application to King County
- Proposal for an aggregate mine and accessory asphalt plant
- Gravel mine operations use water to wash fine silt and other fine materials off mined gravel to create product.
 - Wash water can be collected, treated, and re-used again to minimize water use.
 - Replenish water through evaporation and material absorption.
 - During peak season, ~ 250,000 gallons per day of wash water



Segale Property - ★






Segale Property - ★



Considerations to date:

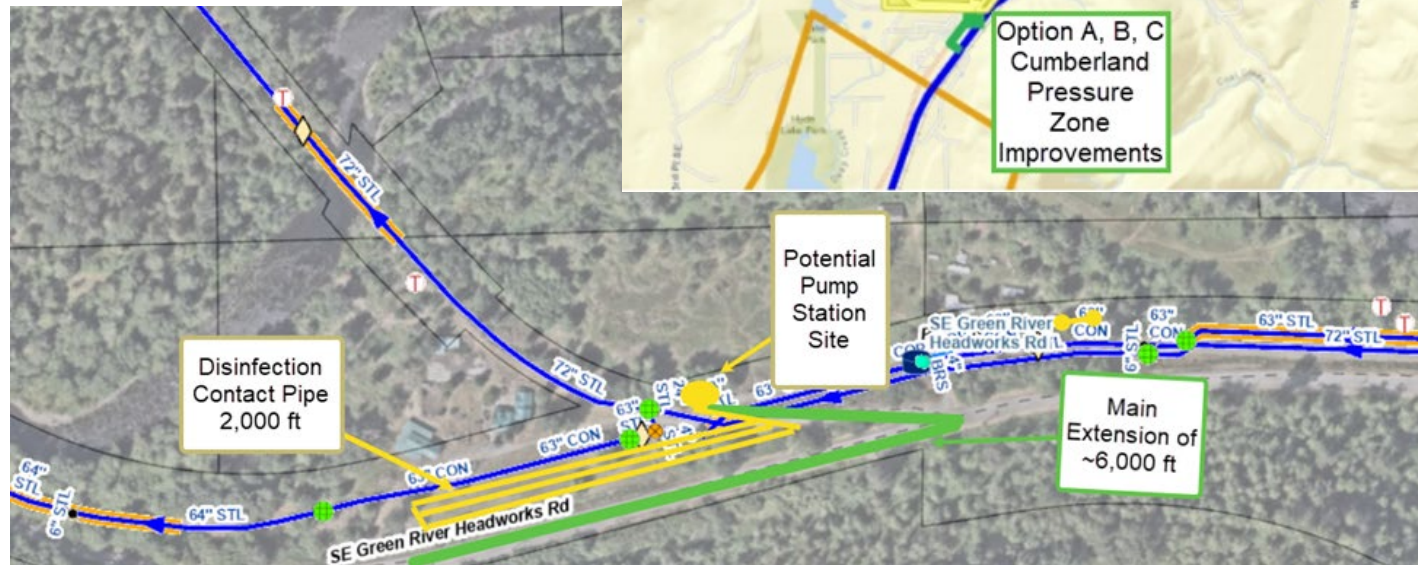
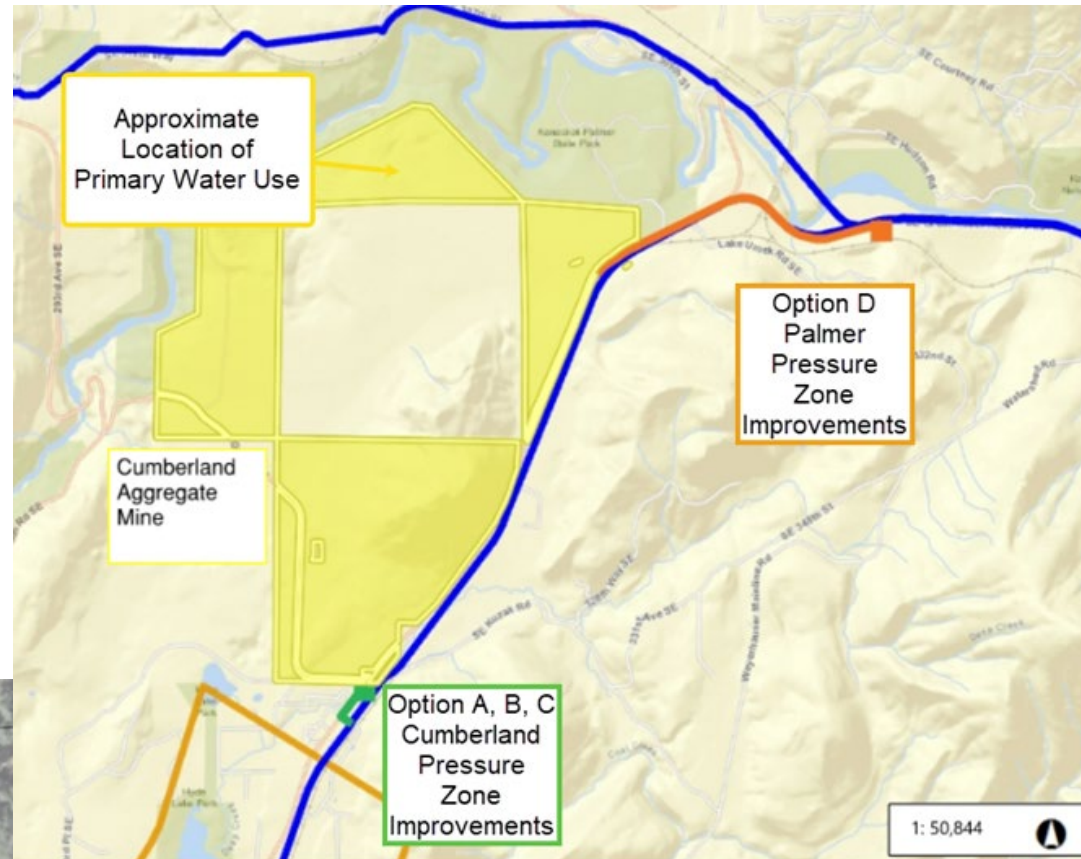
-  Pipeline 1 – Direct Retail Connection
-  Cumberland Coop Water System

Tacoma Water Retail Service Options:

-  Tanker Trucks hauling water
-  Preliminary Engineering Concepts
-  Business Case Determination
 - Positive Return on Investment (ROI)

Preferred Preliminary Option

Palmer Alternative

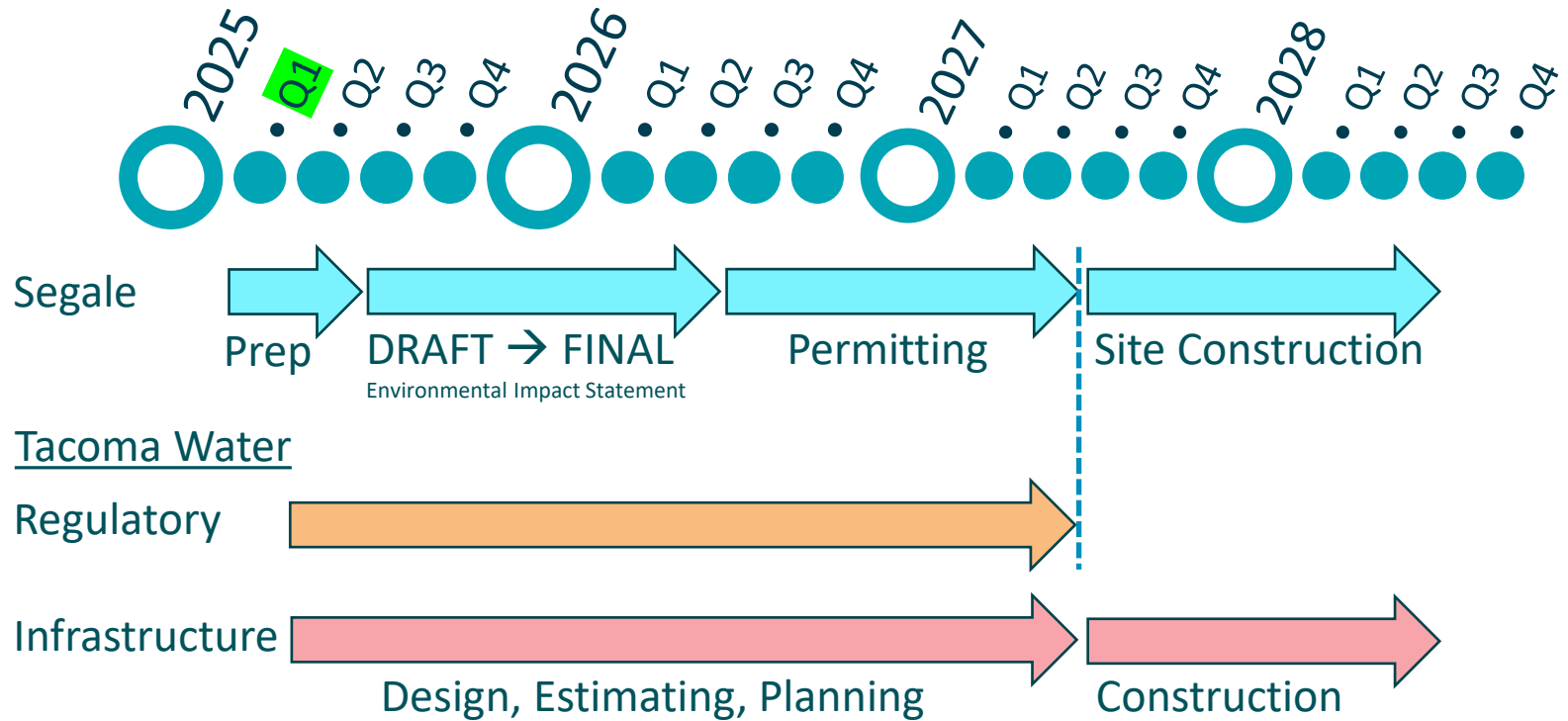


TACOMA WATER
TACOMA PUBLIC UTILITIES

This map illustrates the Lake Umbagog Watershed, highlighting areas for water use and proposed pressure zone improvements. A yellow-shaded region in the upper left is labeled "Approximate Location of Primary Water Use" with an arrow pointing to it. A large yellow-shaded area in the center is labeled "Option D Palmer Pressure Zone Improvements". A green-shaded area in the lower left is labeled "Option A, B, C Cumberland Pressure Zone Improvements". A small inset map in the bottom left corner shows the watershed's location relative to the "Main Water and Parcel". The map includes various roads such as SE Courtney Rd, SE Hudson Rd, Lake Umbagog Rd, SE 34th St, SE 35th St, SE 36th St, SE 37th St, SE 38th St, SE 39th St, SE 40th St, SE 41st St, SE 42nd St, SE 43rd St, SE 44th St, SE 45th St, SE 46th St, SE 47th St, SE 48th St, SE 49th St, SE 50th St, SE 51st St, SE 52nd St, SE 53rd St, SE 54th St, SE 55th St, SE 56th St, SE 57th St, SE 58th St, SE 59th St, SE 60th St, SE 61st St, SE 62nd St, SE 63rd St, SE 64th St, SE 65th St, SE 66th St, SE 67th St, SE 68th St, SE 69th St, SE 70th St, SE 71st St, SE 72nd St, SE 73rd St, SE 74th St, SE 75th St, SE 76th St, SE 77th St, SE 78th St, SE 79th St, SE 80th St, SE 81st St, SE 82nd St, SE 83rd St, SE 84th St, SE 85th St, SE 86th St, SE 87th St, SE 88th St, SE 89th St, SE 90th St, SE 91st St, SE 92nd St, SE 93rd St, SE 94th St, SE 95th St, SE 96th St, SE 97th St, SE 98th St, SE 99th St, SE 100th St, SE 101st St, SE 102nd St, SE 103rd St, SE 104th St, SE 105th St, SE 106th St, SE 107th St, SE 108th St, SE 109th St, SE 110th St, SE 111th St, SE 112th St, SE 113th St, SE 114th St, SE 115th St, SE 116th St, SE 117th St, SE 118th St, SE 119th St, SE 120th St, SE 121st St, SE 122nd St, SE 123rd St, SE 124th St, SE 125th St, SE 126th St, SE 127th St, SE 128th St, SE 129th St, SE 130th St, SE 131st St, SE 132nd St, SE 133rd St, SE 134th St, SE 135th St, SE 136th St, SE 137th St, SE 138th St, SE 139th St, SE 140th St, SE 141st St, SE 142nd St, SE 143rd St, SE 144th St, SE 145th St, SE 146th St, SE 147th St, SE 148th St, SE 149th St, SE 150th St, SE 151st St, SE 152nd St, SE 153rd St, SE 154th St, SE 155th St, SE 156th St, SE 157th St, SE 158th St, SE 159th St, SE 160th St, SE 161st St, SE 162nd St, SE 163rd St, SE 164th St, SE 165th St, SE 166th St, SE 167th St, SE 168th St, SE 169th St, SE 170th St, SE 171st St, SE 172nd St, SE 173rd St, SE 174th St, SE 175th St, SE 176th St, SE 177th St, SE 178th St, SE 179th St, SE 180th St, SE 181st St, SE 182nd St, SE 183rd St, SE 184th St, SE 185th St, SE 186th St, SE 187th St, SE 188th St, SE 189th St, SE 190th St, SE 191st St, SE 192nd St, SE 193rd St, SE 194th St, SE 195th St, SE 196th St, SE 197th St, SE 198th St, SE 199th St, SE 200th St, SE 201st St, SE 202nd St, SE 203rd St, SE 204th St, SE 205th St, SE 206th St, SE 207th St, SE 208th St, SE 209th St, SE 210th St, SE 211th St, SE 212th St, SE 213th St, SE 214th St, SE 215th St, SE 216th St, SE 217th St, SE 218th St, SE 219th St, SE 220th St, SE 221st St, SE 222nd St, SE 223rd St, SE 224th St, SE 225th St, SE 226th St, SE 227th St, SE 228th St, SE 229th St, SE 230th St, SE 231st St, SE 232nd St, SE 233rd St, SE 234th St, SE 235th St, SE 236th St, SE 237th St, SE 238th St, SE 239th St, SE 240th St, SE 241st St, SE 242nd St, SE 243rd St, SE 244th St, SE 245th St, SE 246th St, SE 247th St, SE 248th St, SE 249th St, SE 250th St, SE 251st St, SE 252nd St, SE 253rd St, SE 254th St, SE 255th St, SE 256th St, SE 257th St, SE 258th St, SE 259th St, SE 260th St, SE 261st St, SE 262nd St, SE 263rd St, SE 264th St, SE 265th St, SE 266th St, SE 267th St, SE 268th St, SE 269th St, SE 270th St, SE 271st St, SE 272nd St, SE 273rd St, SE 274th St, SE 275th St, SE 276th St, SE 277th St, SE 278th St, SE 279th St, SE 280th St, SE 281st St, SE 282nd St, SE 283rd St, SE 284th St, SE 285th St, SE 286th St, SE 287th St, SE 288th St, SE 289th St, SE 290th St, SE 291st St, SE 292nd St, SE 293rd St, SE 294th St, SE 295th St, SE 296th St, SE 297th St, SE 298th St, SE 299th St, SE 300th St, SE 301st St, SE 302nd St, SE 303rd St, SE 304th St, SE 305th St, SE 306th St, SE 307th St, SE 308th St, SE 309th St, SE 310th St, SE 311th St, SE 312nd St, SE 313th St, SE 314th St, SE 315th St, SE 316th St, SE 317th St, SE 318th St, SE 319th St, SE 320th St, SE 321st St, SE 322nd St, SE 323rd St, SE 324th St, SE 325th St, SE 326th St, SE 327th St, SE 328th St, SE 329th St, SE 330th St, SE 331st St, SE 332nd St, SE 333rd St, SE 334th St, SE 335th St, SE 336th St, SE 337th St, SE 338th St, SE 339th St, SE 340th St, SE 341st St, SE 342nd St, SE 343rd St, SE 344th St, SE 345th St, SE 346th St, SE 347th St, SE 348th St, SE 349th St, SE 350th St, SE 351st St, SE 352nd St, SE 353rd St, SE 354th St, SE 355th St, SE 356th St, SE 357th St, SE 358th St, SE 359th St, SE 360th St, SE 361st St, SE 362nd St, SE 363rd St, SE 364th St, SE 365th St, SE 366th St, SE 367th St, SE 368th St, SE 369th St, SE 370th St, SE 371st St, SE 372nd St, SE 373rd St, SE 374th St, SE 375th St, SE 376th St, SE 377th St, SE 378th St, SE 379th St, SE 380th St, SE 381st St, SE 382nd St, SE 383rd St, SE 384th St, SE 385th St, SE 386th St, SE 387th St, SE 388th St, SE 389th St, SE 390th St, SE 391st St, SE 392nd St, SE 393rd St, SE 394th St, SE 395th St, SE 396th St, SE 397th St, SE 398th St, SE 399th St, SE 400th St, SE 401st St, SE 402nd St, SE 403rd St, SE 404th St, SE 405th St, SE 406th St, SE 407th St, SE 408th St, SE 409th St, SE 410th St, SE 411th St, SE 412nd St, SE 413th St, SE 414th St, SE 415th St, SE 416th St, SE 417th St, SE 418th St, SE 419th St, SE 420th St, SE 421st St, SE 422nd St, SE 423rd St, SE 424th St, SE 425th St, SE 426th St, SE 427th St, SE 428th St, SE 429th St, SE 430th St, SE 431st St, SE 432nd St, SE 433rd St, SE 434th St, SE 435th St, SE 436th St, SE 437th St, SE 438th St, SE 439th St, SE 440th St, SE 441st St, SE 442nd St, SE 443rd St, SE 444th St, SE 445th St, SE 446th St, SE 447th St, SE 448th St, SE 449th St, SE 450th St, SE 451st St, SE 452nd St, SE 453rd St, SE 454th St, SE 455th St, SE 456th St, SE 457th St, SE 458th St, SE 459th St, SE 460th St, SE 461st St, SE 462nd St, SE 463rd St, SE 464th St, SE 465th St, SE 466th St, SE 467th St, SE 468th St, SE 469th St, SE 470th St, SE 471st St, SE 472nd St, SE 473rd St, SE 474th St, SE 475th St, SE 476th St, SE 477th St, SE 478th St, SE 479th St, SE 480th St, SE 481st St, SE 482nd St, SE 483rd St, SE 484th St, SE 485th St, SE 486th St, SE 487th St, SE 488th St, SE 489th St, SE 490th St, SE 491st St, SE 492nd St, SE 493rd St, SE 494th St, SE 495th St, SE 496th St, SE 497th St, SE 498th St, SE 499th St, SE 500th St, SE 501st St, SE 502nd St, SE 503rd St, SE 504th St, SE 505th St, SE 506th St, SE 507th St, SE 508th St, SE 509th St, SE 510th St, SE 511th St, SE 512nd St, SE 513th St, SE 514th St, SE 515th St, SE 516th St, SE 517th St, SE 518th St, SE 519th St, SE 520th St, SE 521st St, SE 522nd St, SE 523rd St, SE 524th St, SE 525th St, SE 526th St, SE 527th St, SE 528th St, SE 529th St, SE 530th St, SE 531st St, SE 532nd St, SE 533rd St, SE 53

- **Service Area Expansion (greater than 10 acres)**
- **Water System Plan Revision**
- **King County Franchise Agreement**
- **Iterative and progressive process**

Project Timeline



- **Tacoma Water Intentions,**
 - Enter into an Agreement with Segale to progress
 - Regulatory Steps
 - Engineering Concepts & Cost Estimates
 - Benefits & Risks
- **Will request PUB approval at future meetings on,**
 - Expanding Service Area
 - Water System Plan Revisions
 - King County Franchise Agreements

Time for Questions ?

- **Segale Properties and Cumberland Aggregate Mine**



CUMBERLAND AGGREGATE MINE

Segale Properties has submitted an application to King County for an aggregate mine and accessory asphalt plant near Cumberland, WA.

