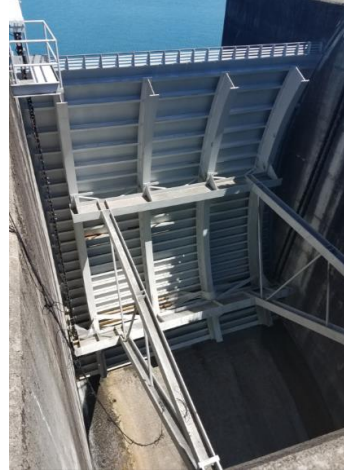


Mossyrock Dam Seismicity Studies Update – April 2023

Public safety is a top priority for Tacoma Power. Revised seismic hazard data from the United States Geological Survey indicated that the Mossyrock Dam spillway piers and gates (not the dam itself) could potentially be damaged in the event of a large earthquake. If the gate structures are damaged when the lake is at a full level, this could cause an extreme downstream flooding event. Although the earthquake probability is very low, we decided to reduce this risk by keeping Riffe Lake's elevation to about 30 feet lower than full (778.5 feet). The drawdown began in 2017. We worked with our regulators to make this decision, and they approved our plan to voluntarily lower the level.



Mossyrock Dam spillway piers



Spillway gate (located between each pier)

Our objective is to bring Riffe Lake back to full pool. We are working hard to make progress on identifying potential seismic damage to any other parts of the dam, as well as possible seismic retrofits, but this a long and complex process.

Covid and other factors delayed our progress for three years as we waited for external agencies to provide us with the information we needed to continue the work. The good news is we received that information and have been moving forward.

Where we are today:

- Our consultants submitted our Seismic Hazard Analysis, along with a time history analysis, to our federal regulator. Our consultants are revising both based on our regulator's comments.
- We created a preliminary computer model, and we are incorporating the results from conducting physical performance testing at Mossyrock Dam to improve the model.
- We are evaluating other items that could delay raising the lake, including a seismic analysis of the dam's embankment, our Kosmos Flats site cleanup, and shoreline vegetation management.

Although we have made progress, we are still years away from having a definitive solution. We don't anticipate any type of potential construction to occur until at least 2030. In the meantime, we are exploring alternatives for long-term mitigation (other than the drawdown).

We greatly appreciate the public's patience as we work through this process.

Have questions? Send them to cowlitz@cityoftacoma.org. If you would like to receive updates about the Cowlitz River Project, please provide your name and email address at [MyTPU.org/CowlitzCurrents](https://www.mytpu.org/CowlitzCurrents).