

FERC License

95% Fish Passage Survival

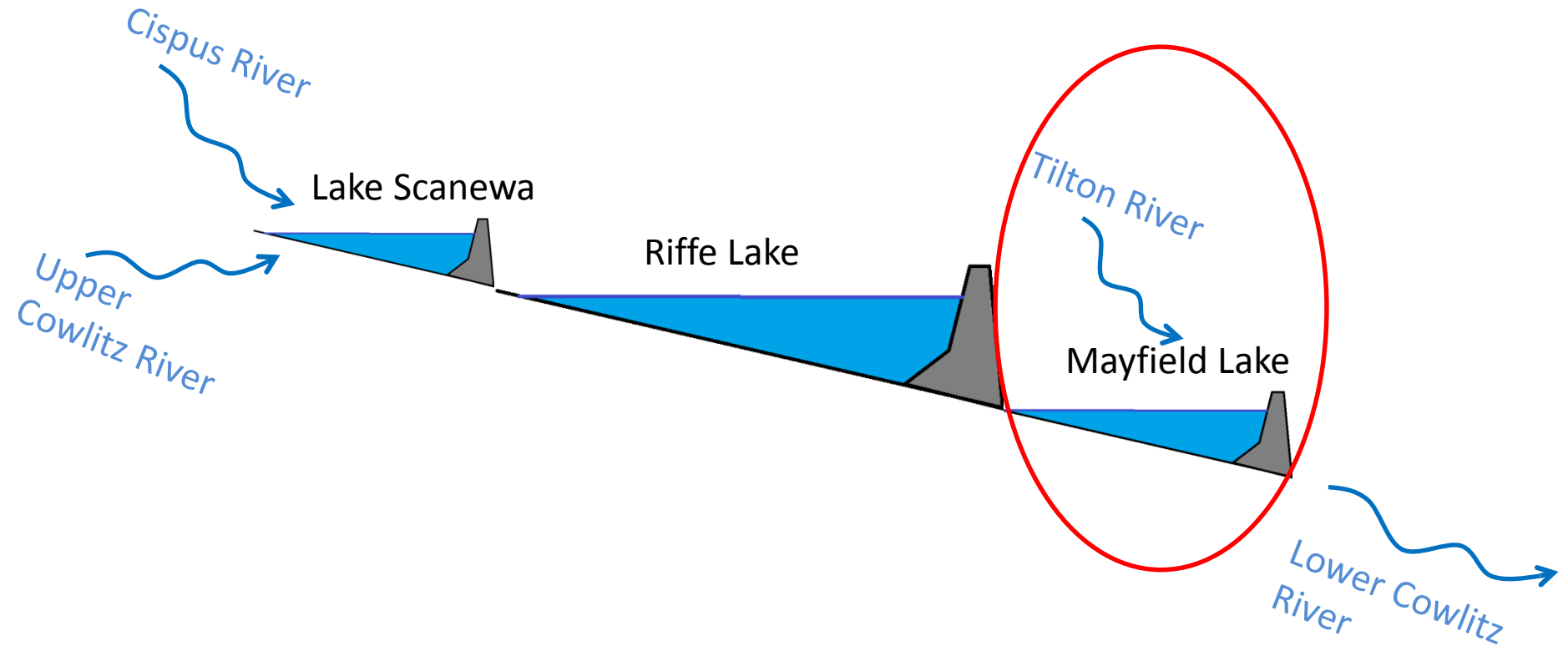
- Entrance to exit of dam, all routes
- Recovery and Harvest

or

In Lieu

- High enough to support self-sustaining populations
- Fish migrating downstream has been maximized by all reasonable measures
- Adjustments to hatchery production (existing facilities) and/or habitat measures are required

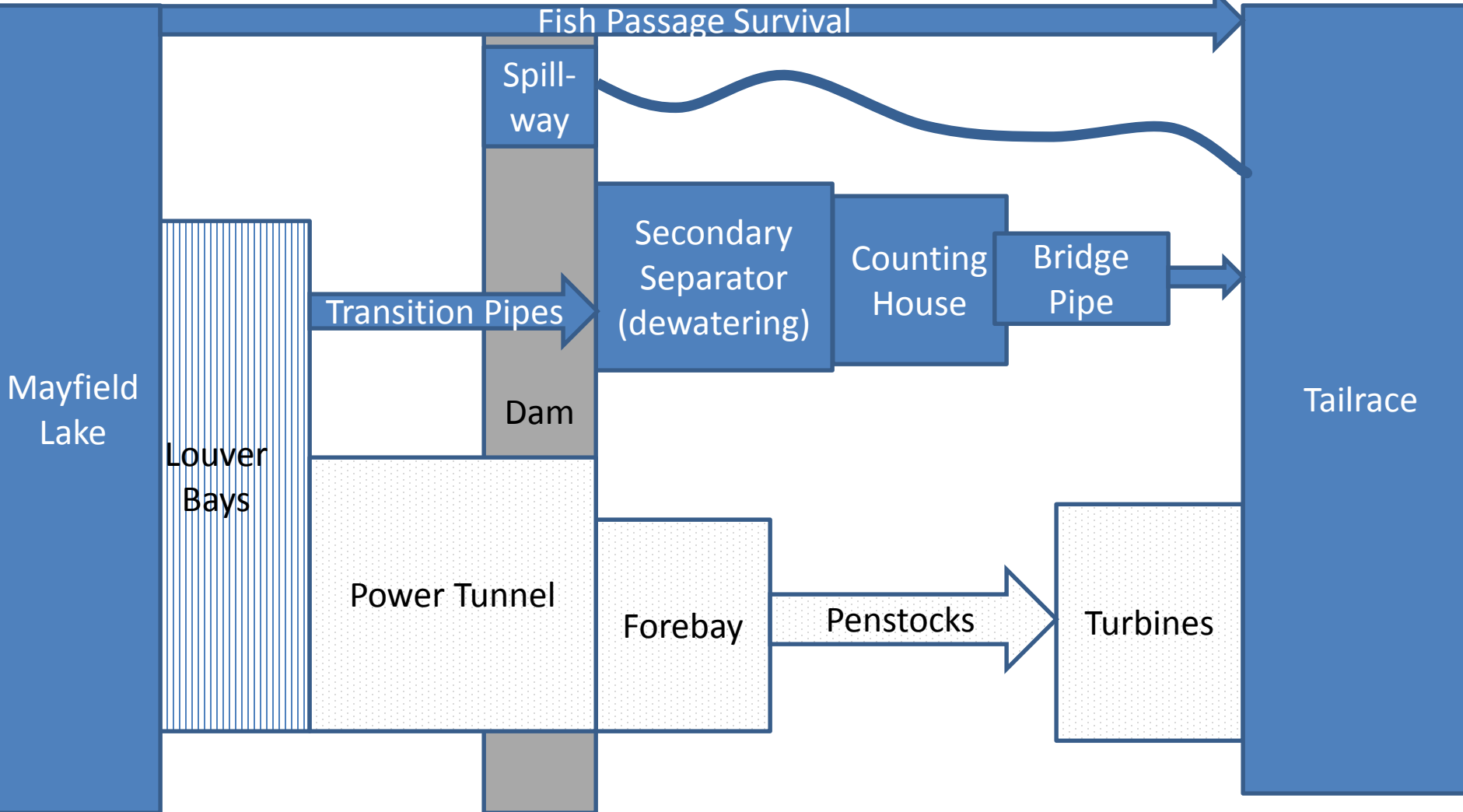
Big Picture





Imagery ©2019 Google, Imagery ©2019 Maxar Technologies, U.S. Geological Survey, USDA Farm Service Agency, Map data ©2019 United States Terms Send f

Downstream Fish Passage



Specific Problems/Solutions

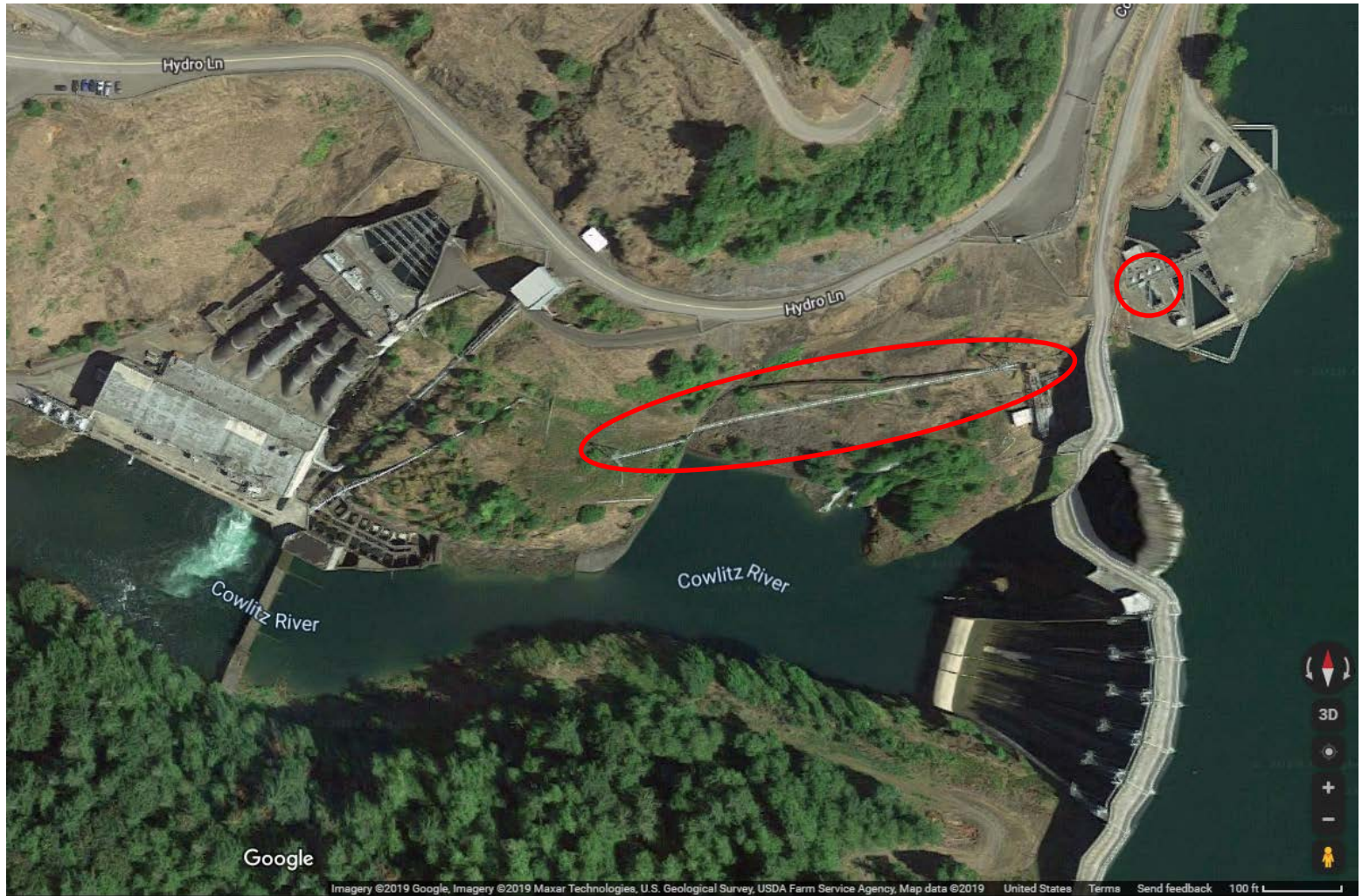
Juvenile Bypass System

- **After Collection** Survival 50% for Chinook
- Two major problems
 - Dewatering (Secondary Separator)
 - Suspension Bridge

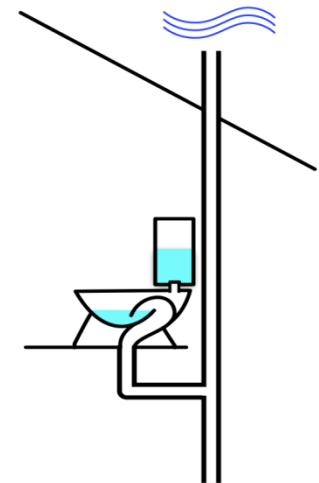
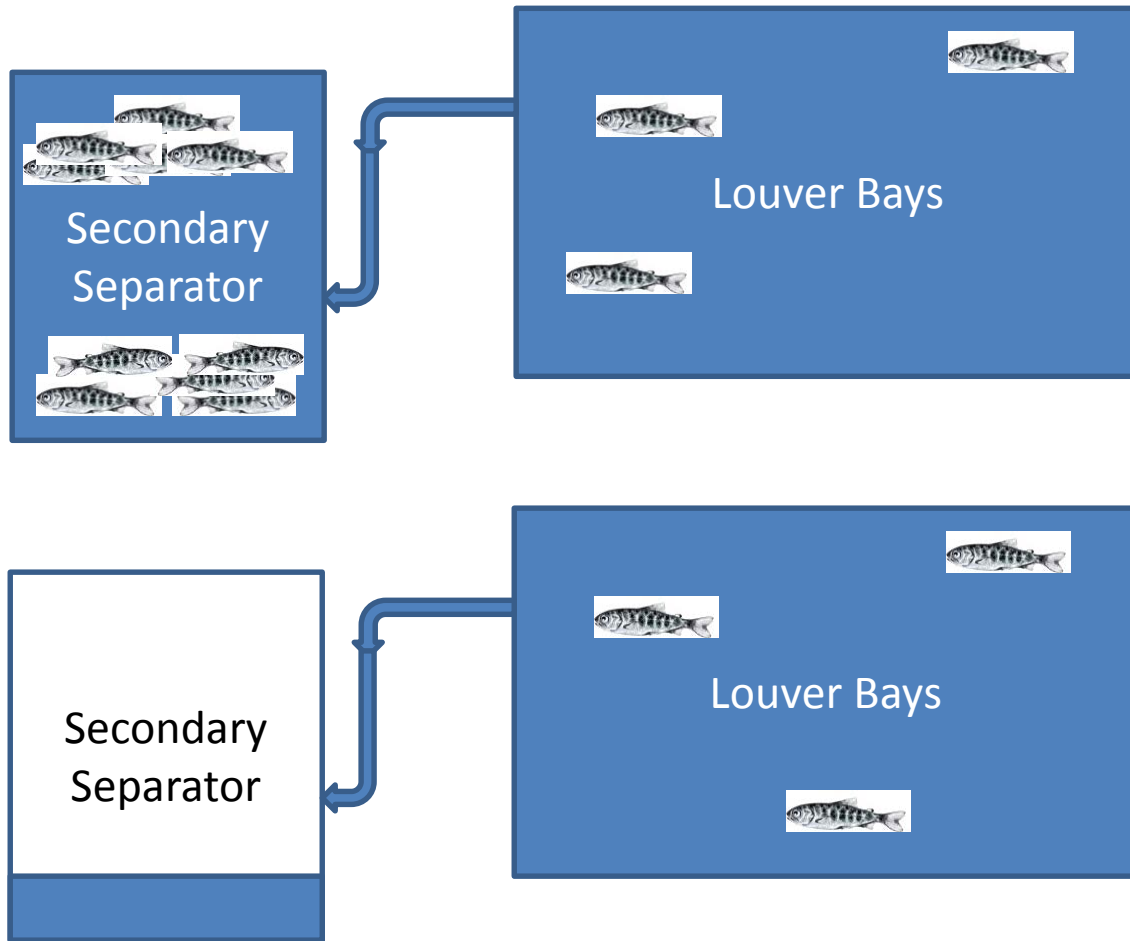
Results

- Fish Delay, Stress, Disease and Die

Specific Problems/Solutions



Near Term Plans 2019-2020



Near Term Plans 2020-2021

Suspension Bridge

- Structural Engineering Assessment – 2019
- Options and Costs will vary based on Results
- Design 2020
- Construction 2021

