

# Tacoma Public Utilities Hazard Mitigation Plan

August 13, 2025

Lisa Millius, Courtney Rose TPU Emergency Management



# Purpose of the Hazard Mitigation Plan



The TPU Hazard Mitigation Plan (HMP) Addendum **identifies and prioritizes strategies to reduce or eliminate long-term risks from natural hazards—**such as earthquakes, floods, wildfires, and severe storms—that could impact TPU’s ability to deliver essential utility services.

This planning effort **enhances TPU’s resilience, informs infrastructure investment decisions, and ensures continued eligibility for FEMA hazard mitigation and disaster recovery grants.** The Addendum supplements the 2025–2030 Pierce County Regional Hazard Mitigation Plan and is developed in collaboration with the countywide Utility Discipline Group. It is not a standalone document but expands on regional strategies with TPU-specific analysis and actions.

# Why Hazard Mitigation Matters



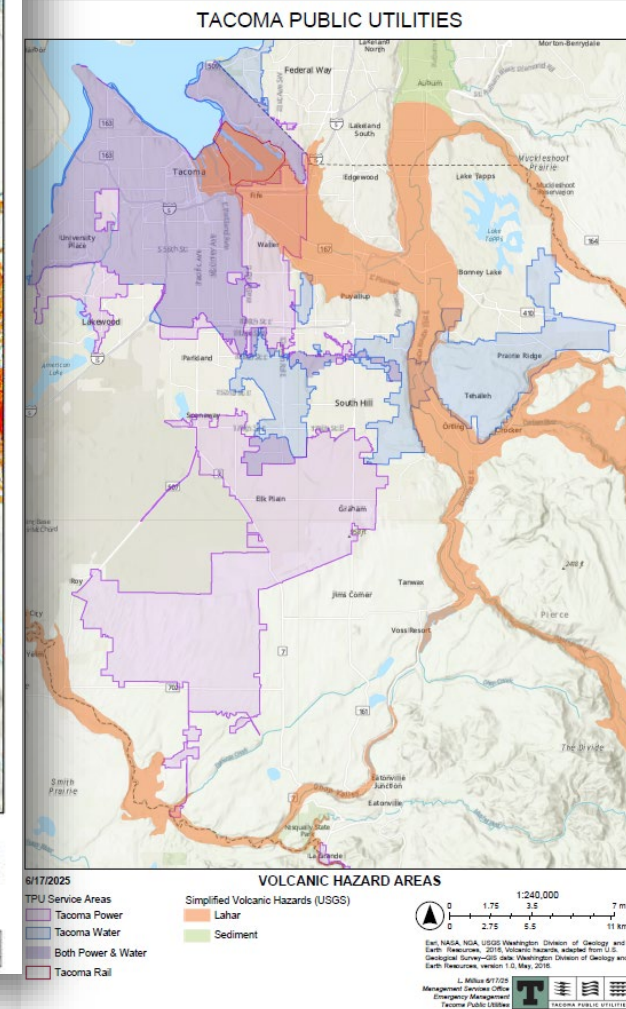
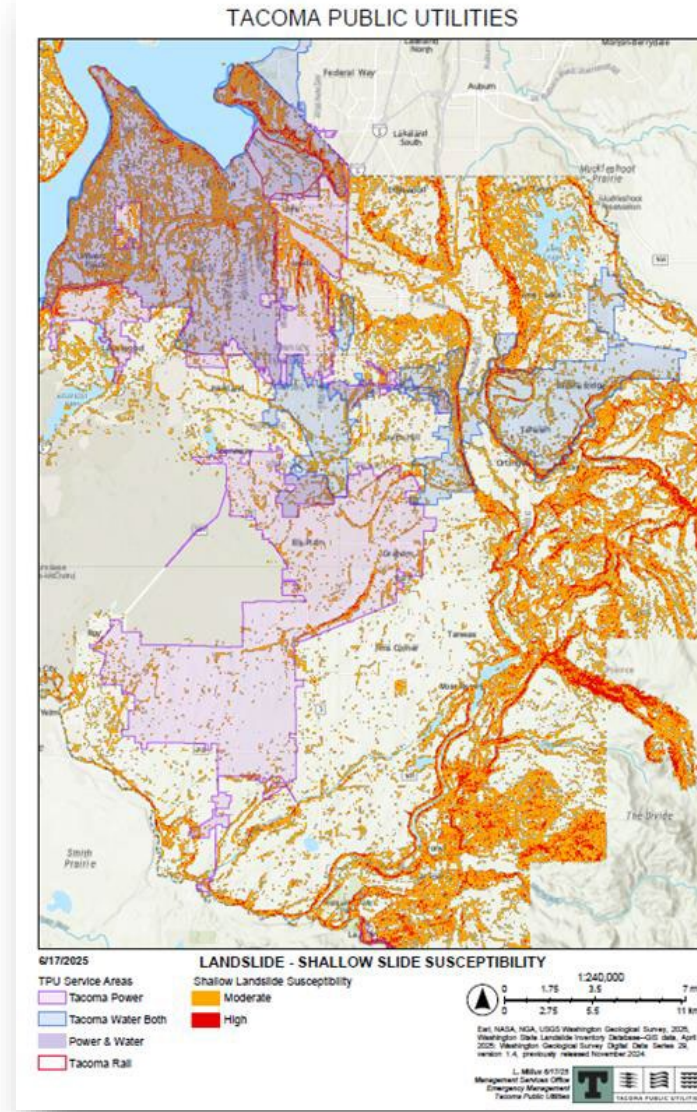
- **Operational Resilience:** Reduces future losses and recovery costs while protecting critical infrastructure and ratepayers.
- **Strategic Investment:** Supports smart capital planning using hazard mapping and risk assessments.
- **Grant Eligibility:** Maintains compliance with federal requirements for pre- and post-disaster FEMA funding.
- **Interagency Coordination:** Aligns TPU mitigation efforts with regional partners and local governments.
- **Informed Decision-Making:** Provides hazard data to guide incident response & future infrastructure development and upgrades.



# Natural Hazards Assessed



- **Earthquake**
  - Liquefaction Susceptibility
- **Flood**
- **Landslide**
  - Deep Seated Slide Susceptibility
  - Shallow Slide Susceptibility
- **Tsunami**
- **Volcanic**
- **Wildfire**



# Key Features of the Hazard Mitigation Plan



- **Comprehensive Risk Assessment (Natural Hazards)**
  - Hazard Mapping across TPU's utilities' service areas to identify vulnerabilities and assess exposure.
- **Division-Specific Mitigation Strategies**
  - Prioritized mitigation projects developed for one or more TPU divisions based on risk and operational impact.
    - Tier 1: Evaluated by cost, benefit, implementation timeframe
    - Tier 2: Scored using a strategic priority rating
- **Fulfills FEMA Funding Eligibility (all jurisdictions)**
  - Approved plan provides accessibility to funding (grant and public assistance) throughout our service and operational areas within and out of Pierce County.

# FEMA Requirements



- Hazard Mitigation Plan required for pre- and post-incident FEMA funding
- Meet requirements outlined in FEMA's Local Hazard Mitigation Planning Guide
- Official documented approval and adoption from governing entity (PUB)
- Document made available to community members via Pierce County website

# Project Milestones



# Requested Support from PUB members



- Review of Draft Plan
- Provide any questions or comments
- Support adoption during final approval process
- Champion resilience efforts across TPU Divisions



# Next Steps



- **Incorporate Executive and Partner Feedback-complete**
  - Final revisions based on input from TPU Leadership and partners.
- **Submit Plan for Review and Approval-**
  - Submit to Pierce County (complete), WA EMD and FEMA Region X for formal review and approvals.
- **Adopt Plan via Utility Board Resolution**
  - Present final plan for formal adoption by the Public Utility Board to meet FEMA requirements and support implementation.
- **Integrate Mitigation Strategies into Planning**
  - Align proposed actions with both short-term operational priorities and long-term capital planning.
- **Pursue Grant Funding Opportunities**
  - Leverage programs like FEMA's HMGP and state resources.
- **Coordinate with Leadership**
  - Use updated risk data to inform future infrastructure decisions and resilience efforts.
- **Prepare for Plan Update (2029-2030)**
  - Establish a timeline for the next HMP cycle and maintain integration across departments.

# Questions & Discussion