

Tacoma Power

Energy Risk Management/Power Supply Update – Q1'2020

Ying Hall
Energy Risk Manager

Todd Lloyd
Assistant Power Manager, Resource Operations & Trading

May 27, 2020



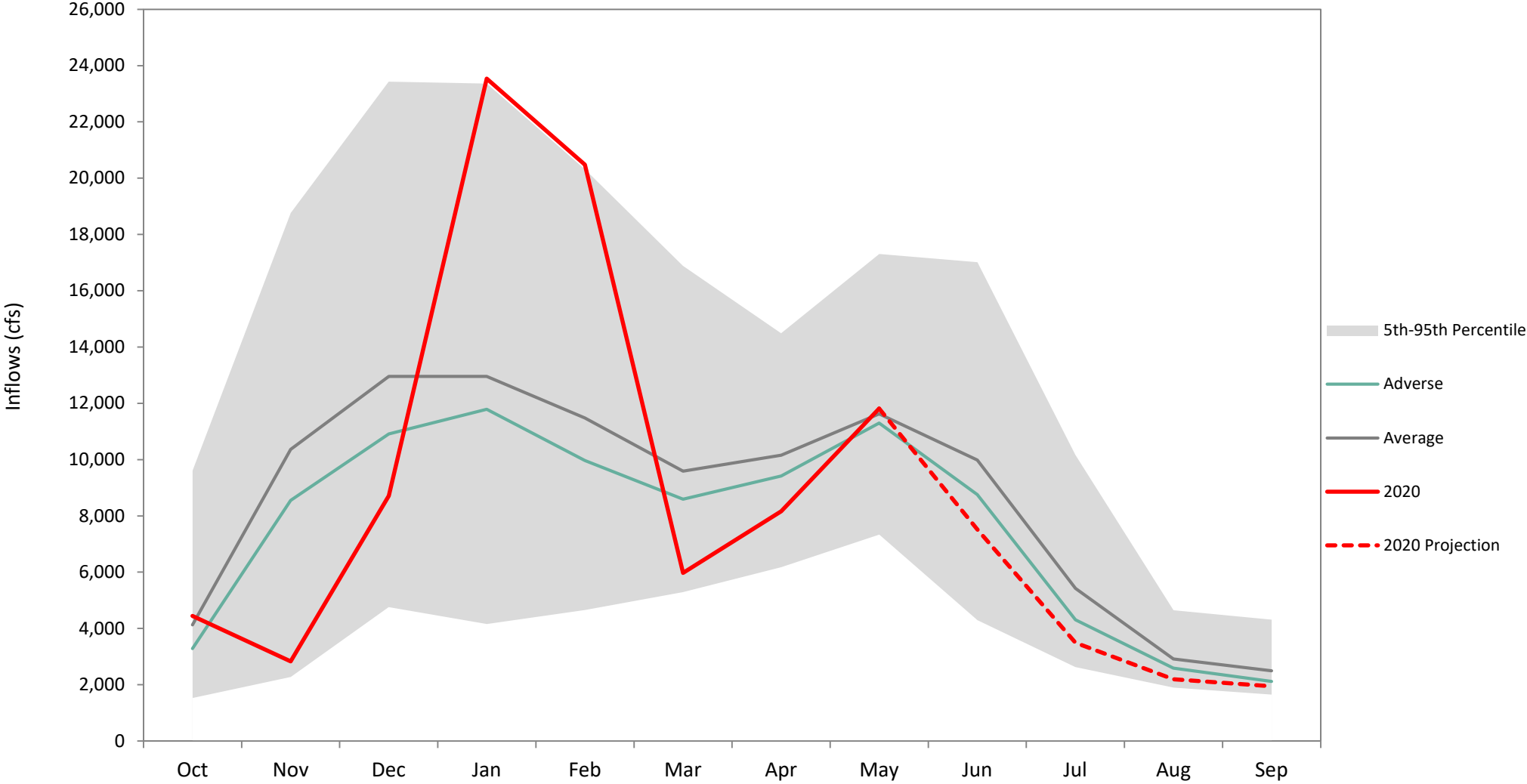
Power Supply

Section 1

Power Supply Update

Graph 1: Tacoma System Inflows

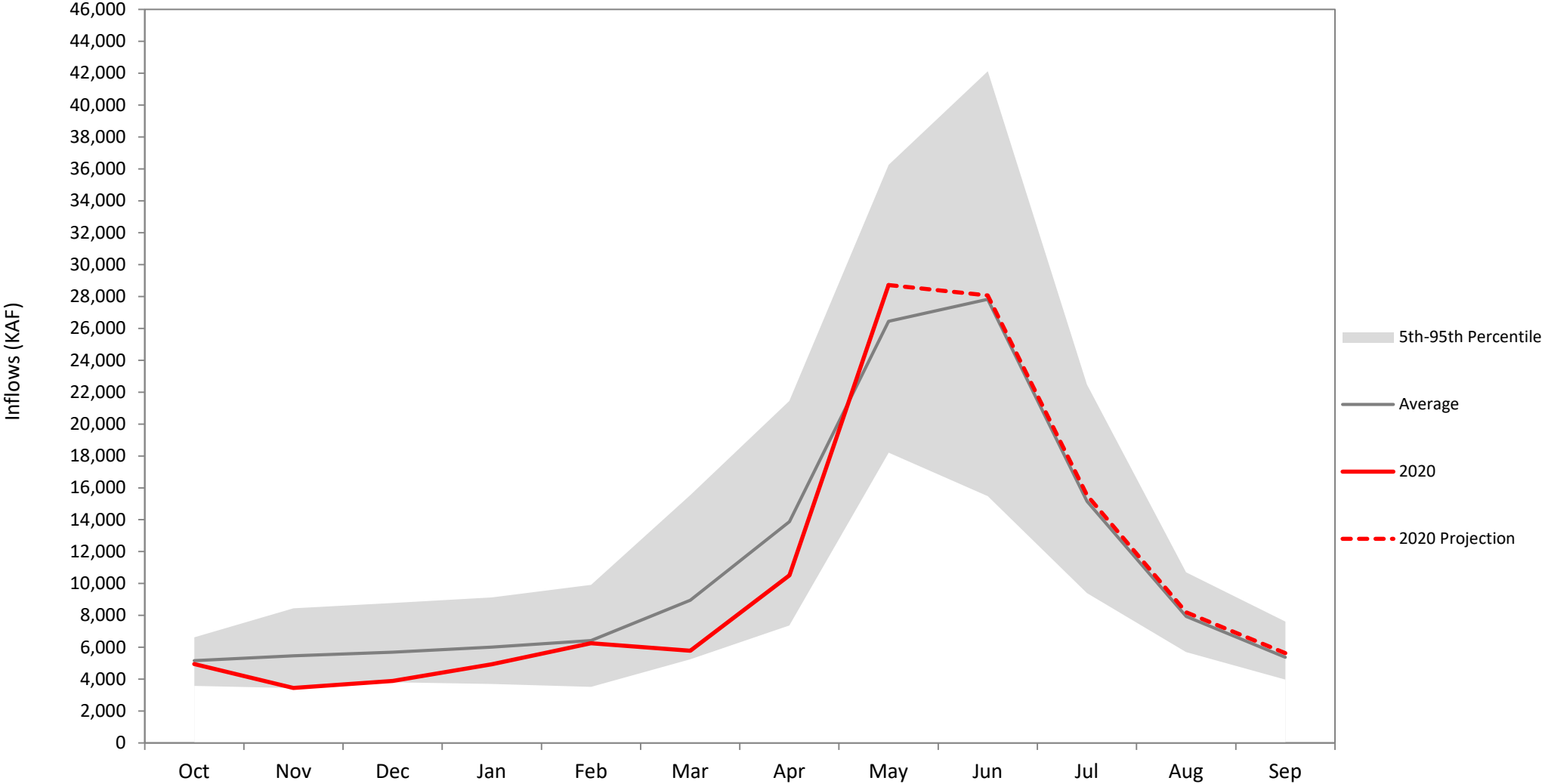
(Tacoma System Hydro Inflows, Water Year 1929 – 2020)



Power Supply Update

Graph 2: Federal System Inflows

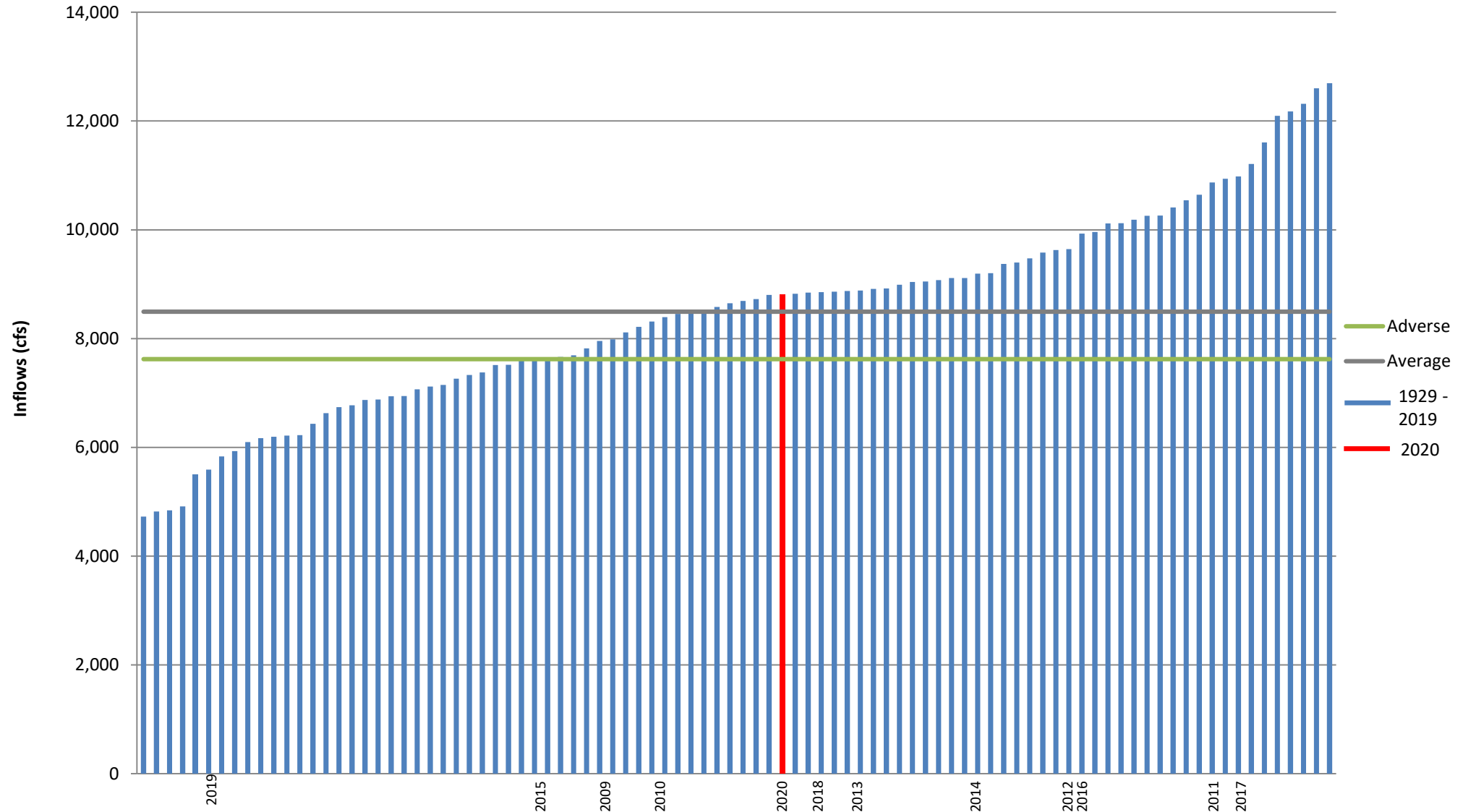
(Federal System Hydro Inflows, Water Year 1961 – 2020)



Power Supply Update

Graph 3: WY 2020 Tacoma System Inflows

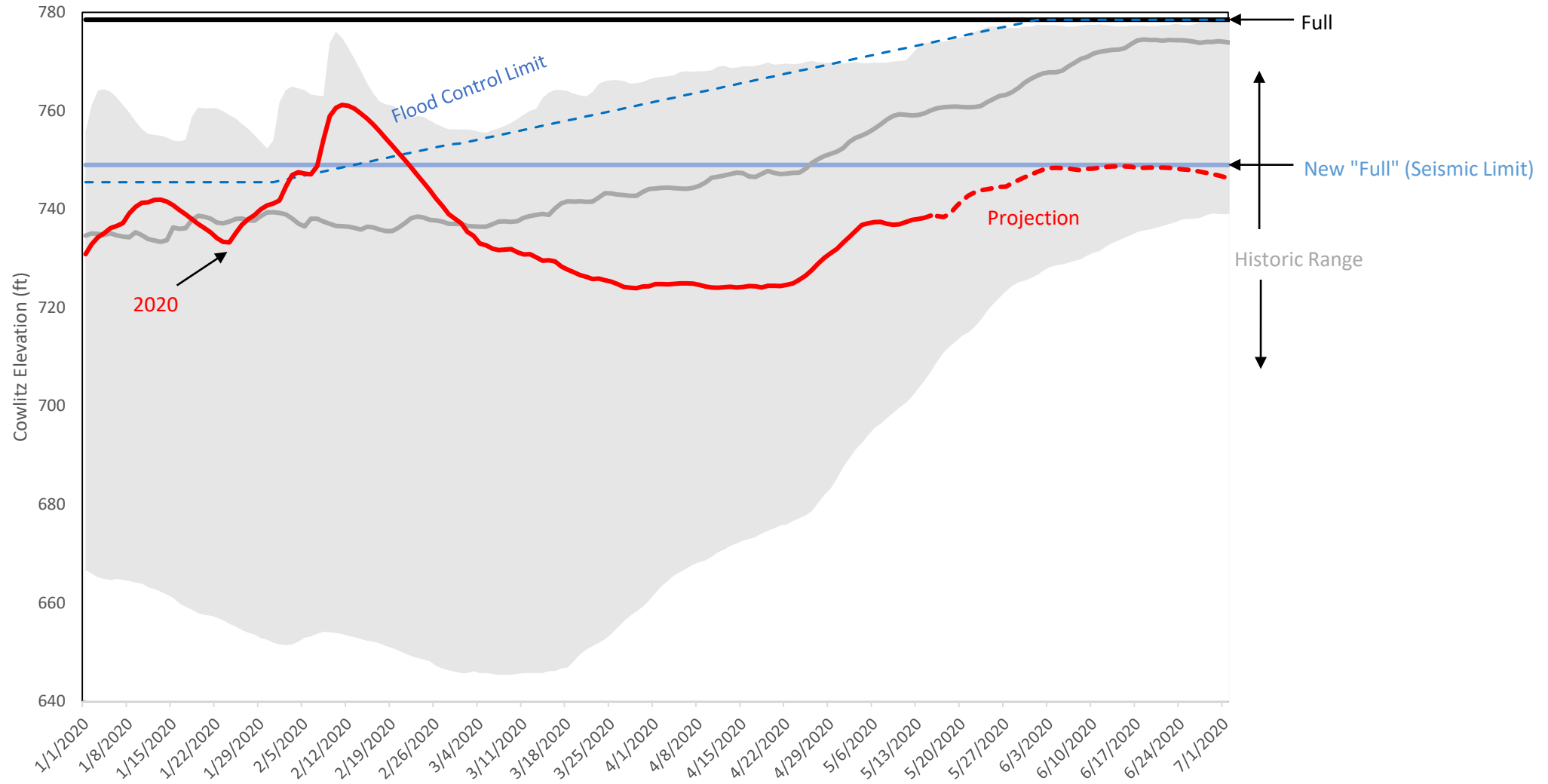
(Tacoma System Inflows Annual Avg., Water Year 1929 – 2020)



Power Supply Update

Graph 4: Cowlitz Hydroelectric Project's Elevation

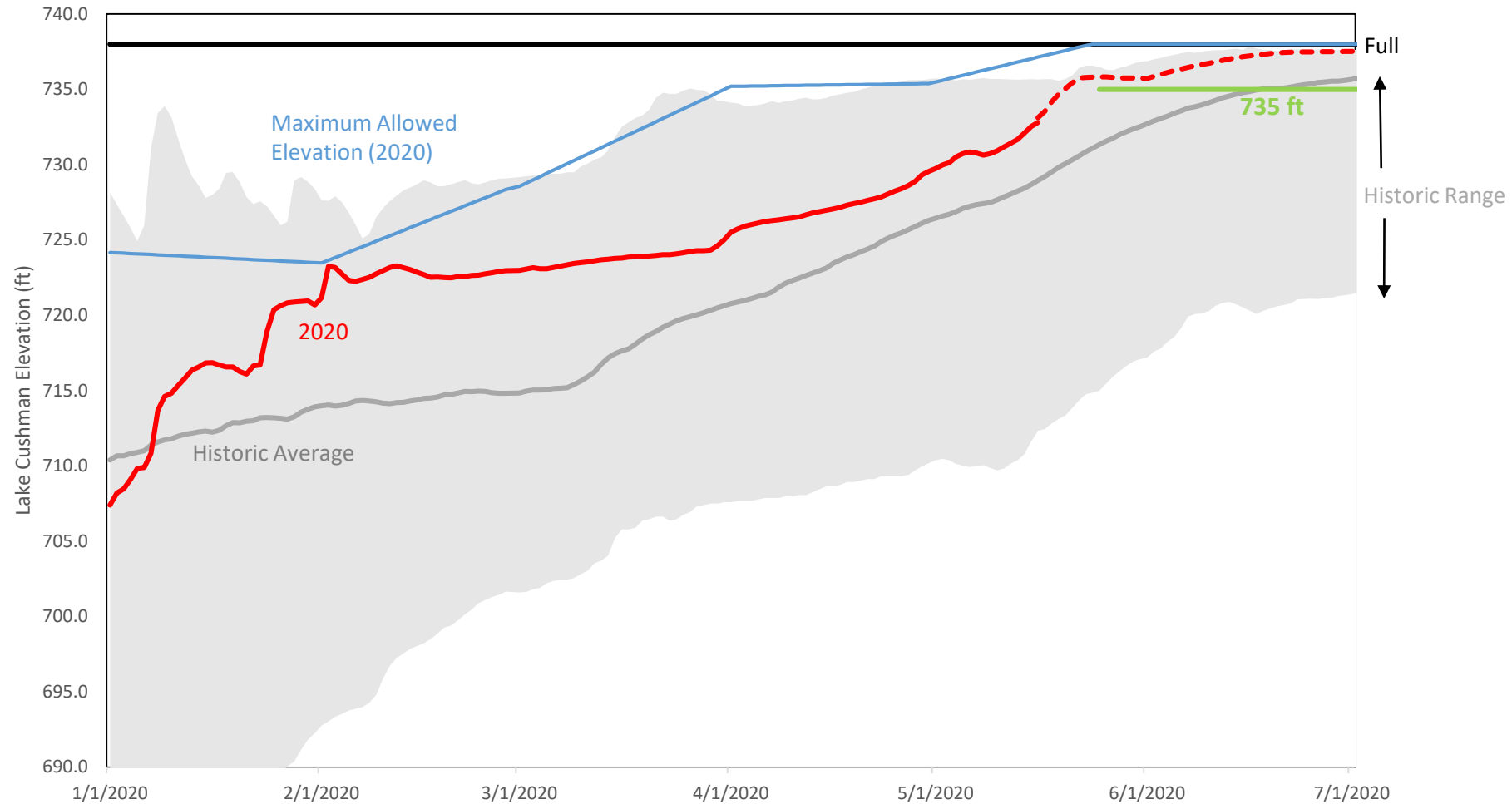
(Cowlitz Elevation, Current vs. Historic)



Power Supply Update

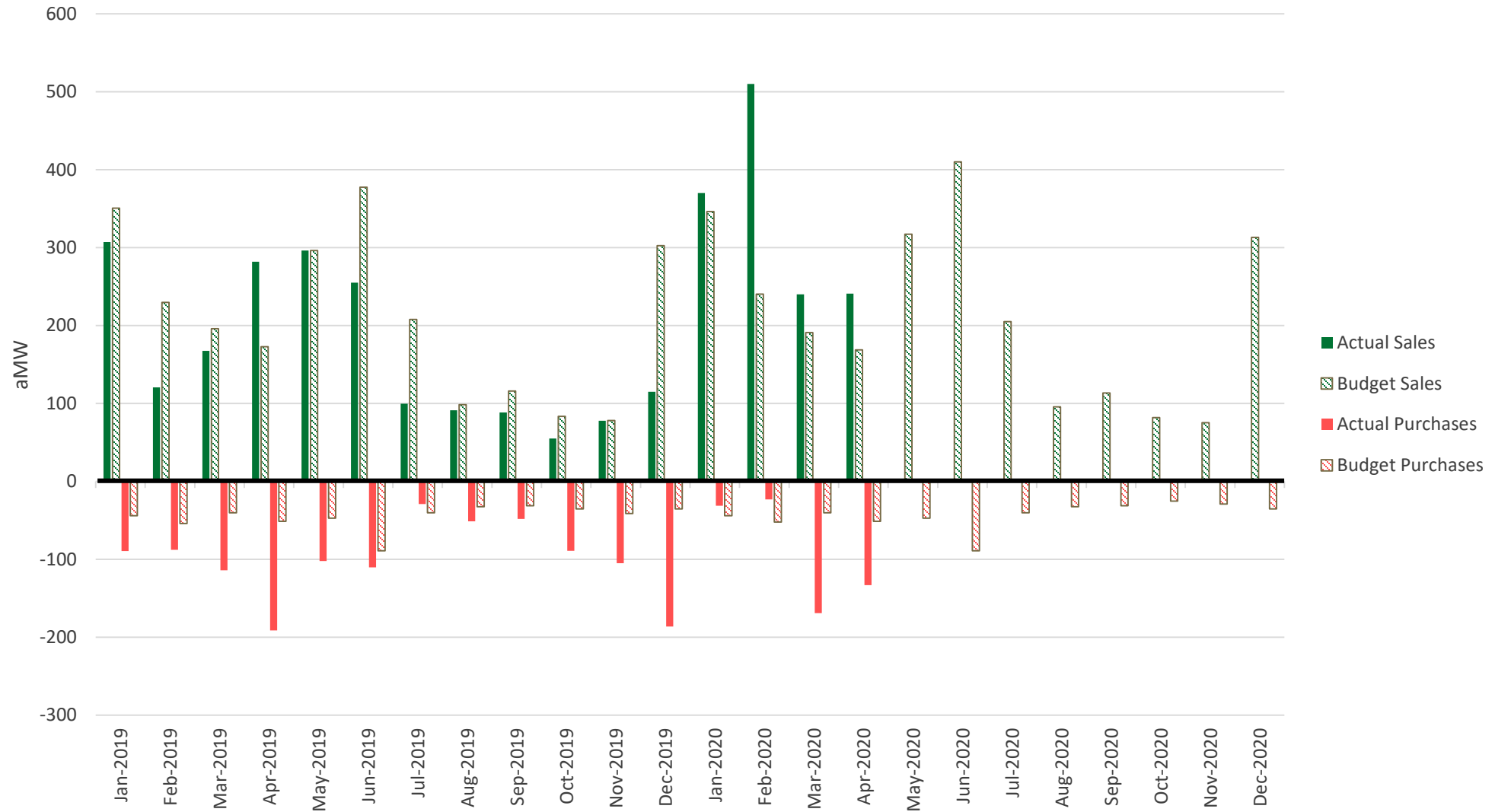
Graph 5: Cushman Hydroelectric Project Elevation

(Cushman Elevation, Current vs. Historic)



Power Supply Update

Graph 6: Actual versus Budgeted Sales and Purchase Volumes



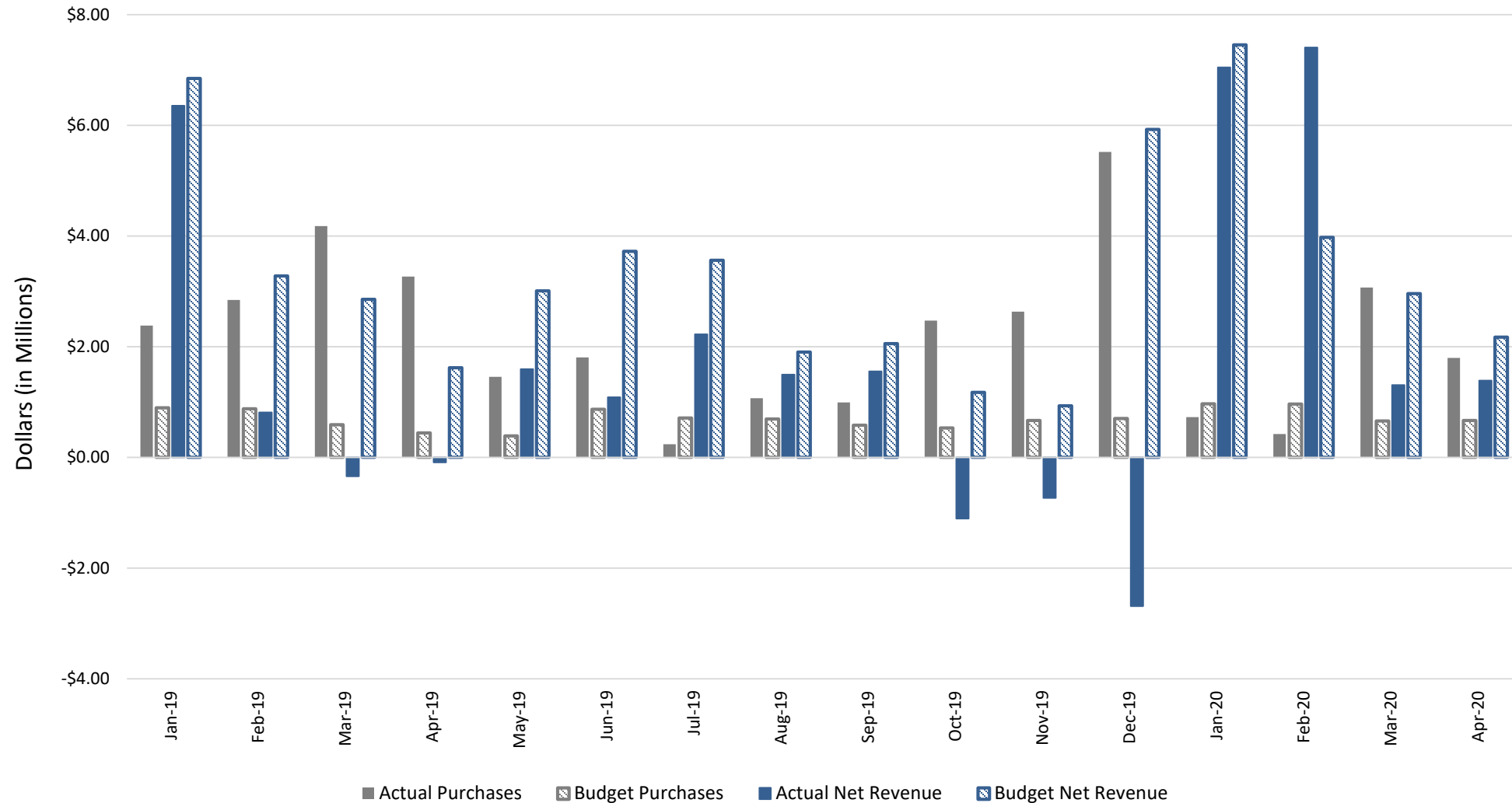
Wholesale Net Revenues

Section 2

Wholesale Net Revenues

Graph 7: Actual Revenue is \$26M Below Budget Biennium-To-Date

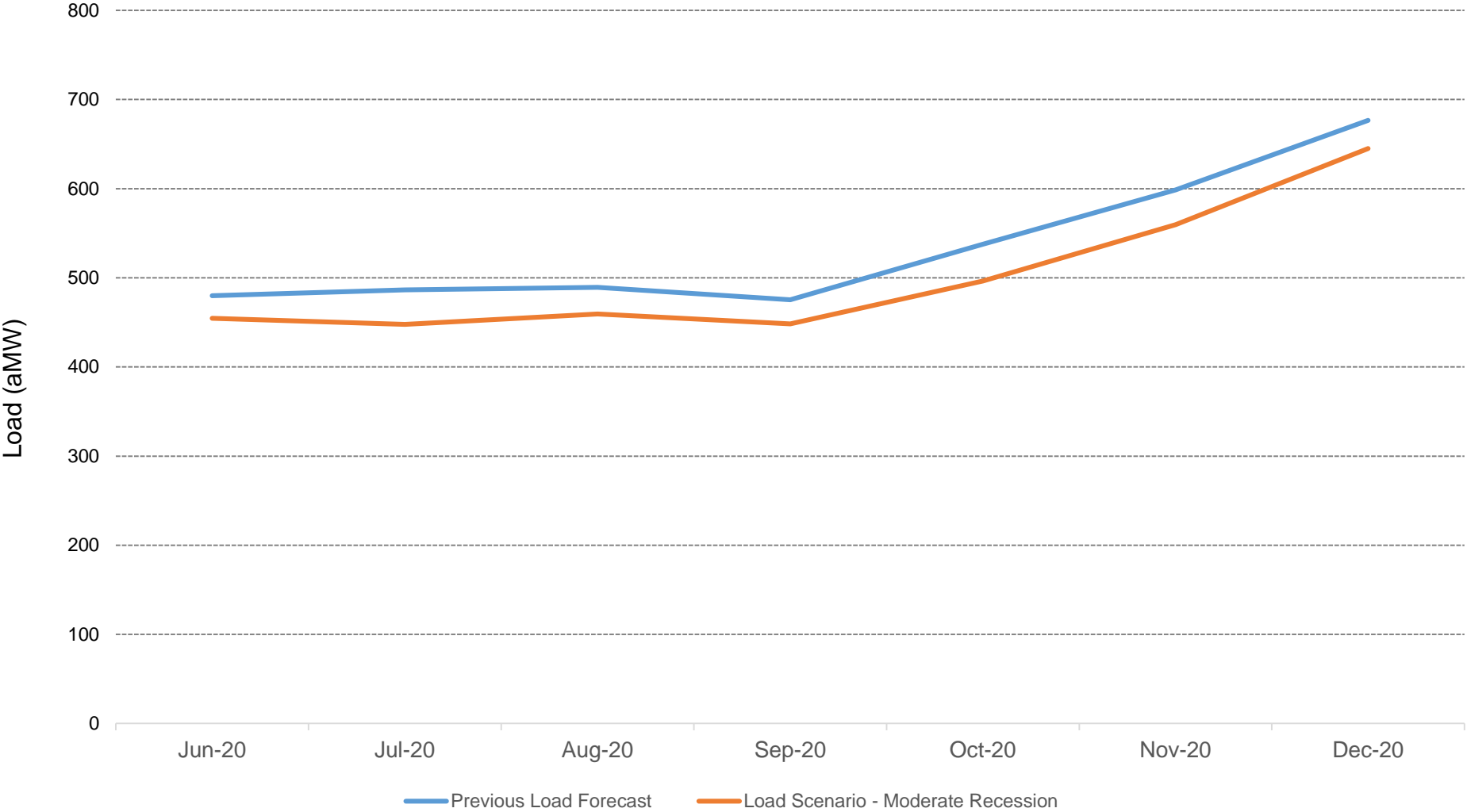
(Monthly Actual vs. Budget Wholesale Purchases and Net Revenues)



Wholesale Net Revenues

Graph 8: Lower Load Expected Due to Stay-At-Home, Recession

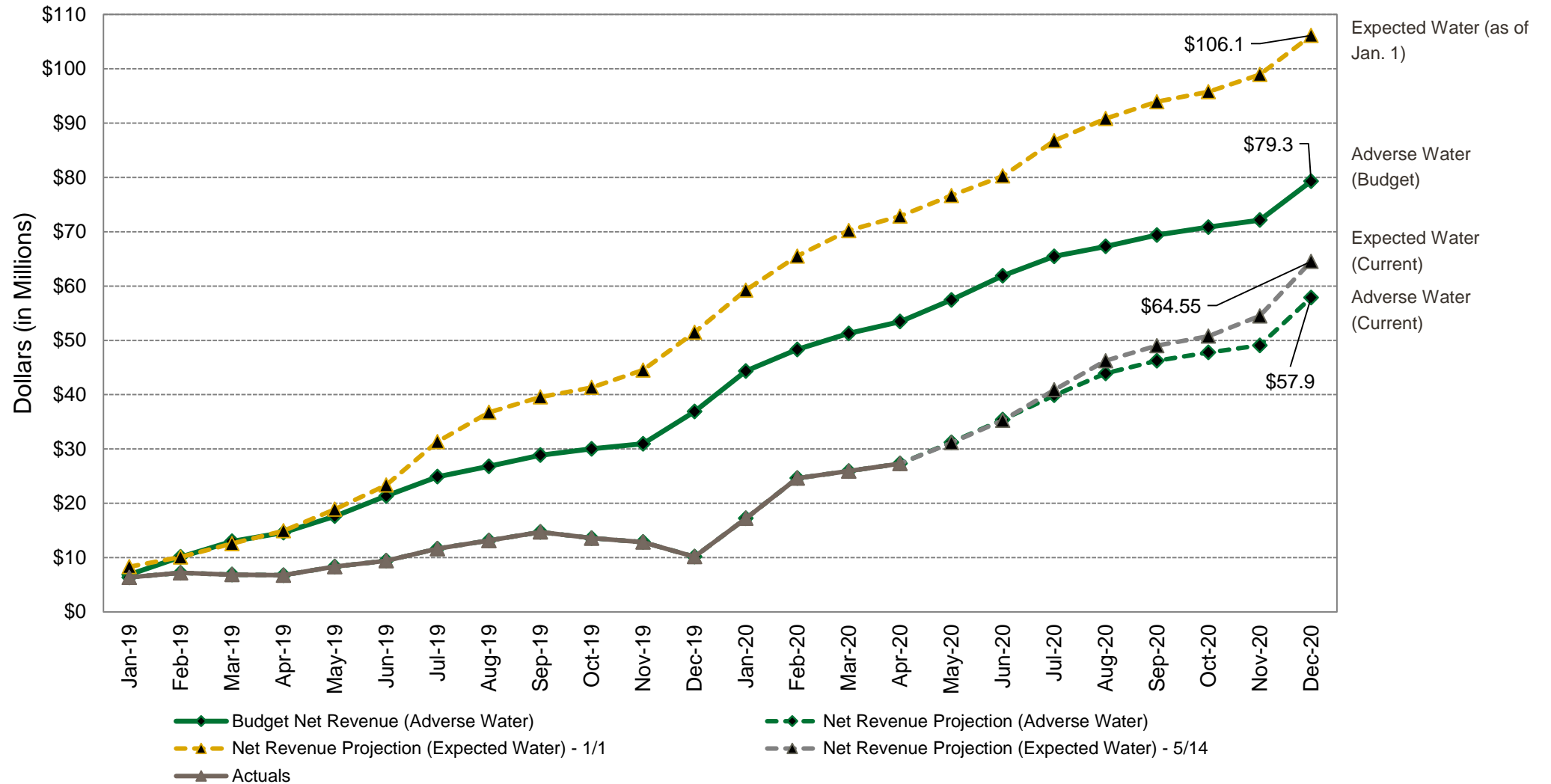
(Moderate Recession Load Scenario)



Wholesale Net Revenues

Graph 9: High Q1 Revenues, Projections Remain Below Budget

(Cumulative Actual vs. Budget Wholesale Net Revenues, 2019 – 2020)



Wholesale Net Revenues

Graph 10: Probability of Making Budget Has Increased to 13%

(Risk Model Simulation of Biennial Net Revenues, 2019 – 2020)

