

Serving our customers

Tacoma Power Dam Safety Program

March 2026

Paul Lennemann



4 FERC Licenses*

*Wynoochee co-licensee

7 Hydroelectric Developments

Power's Mission:

We deliver clean, reliable services essential to quality of life.

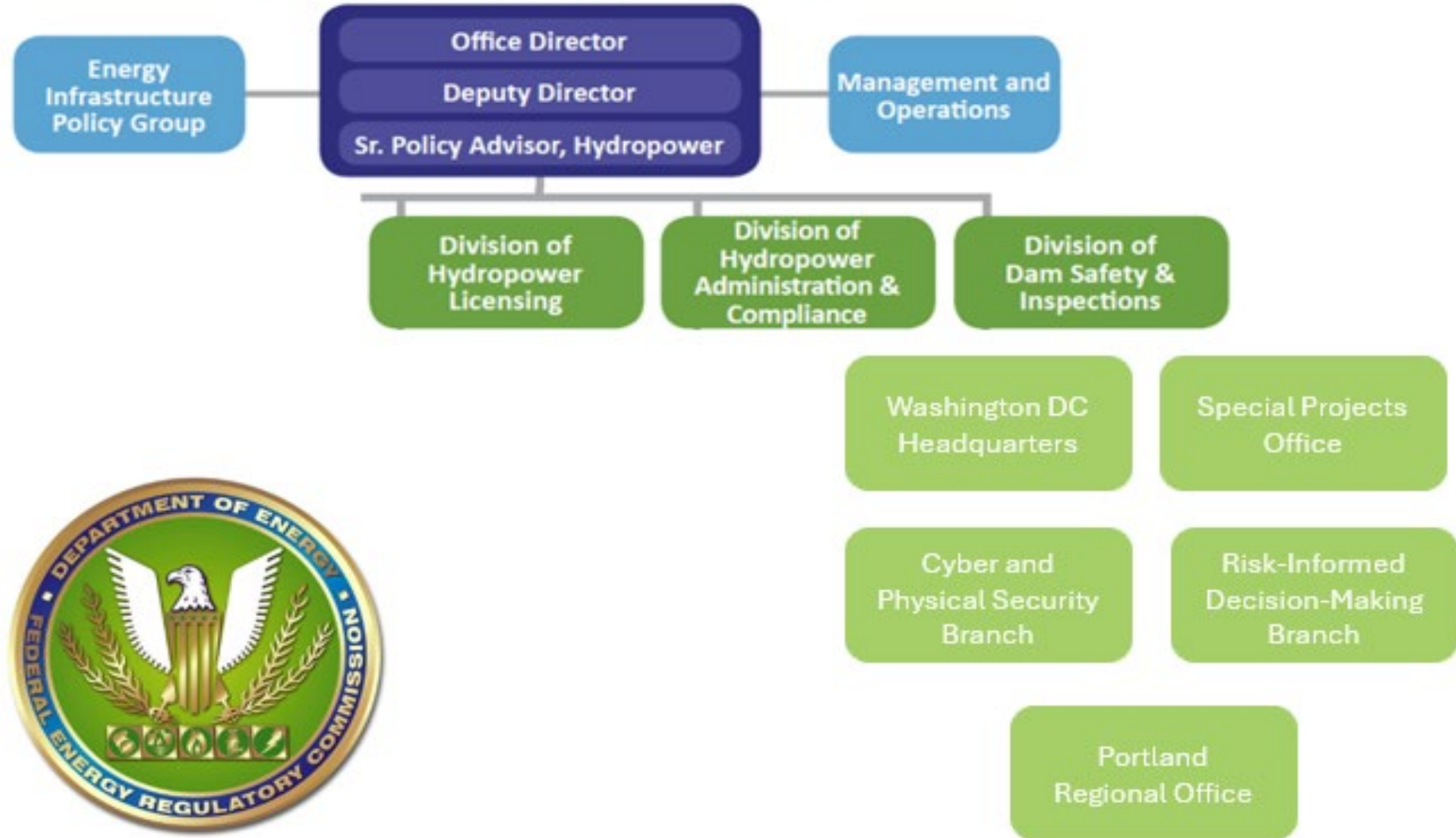
To create clean, reliable, marketable energy while ensuring stewardship of our resources

Generation's Mission:

To create clean, reliable, marketable energy while ensuring stewardship of our resources.

To create clean, reliable, marketable energy while ensuring stewardship of our resources

Office of Energy Projects (OEP)



Tacoma's dams are regulated by the authority provided to the FERC from the Federal Power Act:

16 U.S.C. §§ 791 to 823d

FERC requirements and guidelines come from:

18 CFR Part 12, §12.1 – 12.65

- Inspections (Independent, FERC, & Tacoma)
- Surveillance, Monitoring, and Reporting
- Technical Reviews and Analyses
- Emergency Management
- Physical and Cyber Security

Public Utility Board

“The Board supports the Dam Safety Program by providing budgetary and personnel resources required to ensure the objectives of the ODSP are met.”

Tacoma Power Staff Procedure #D-03

Dam Safety Program Objectives

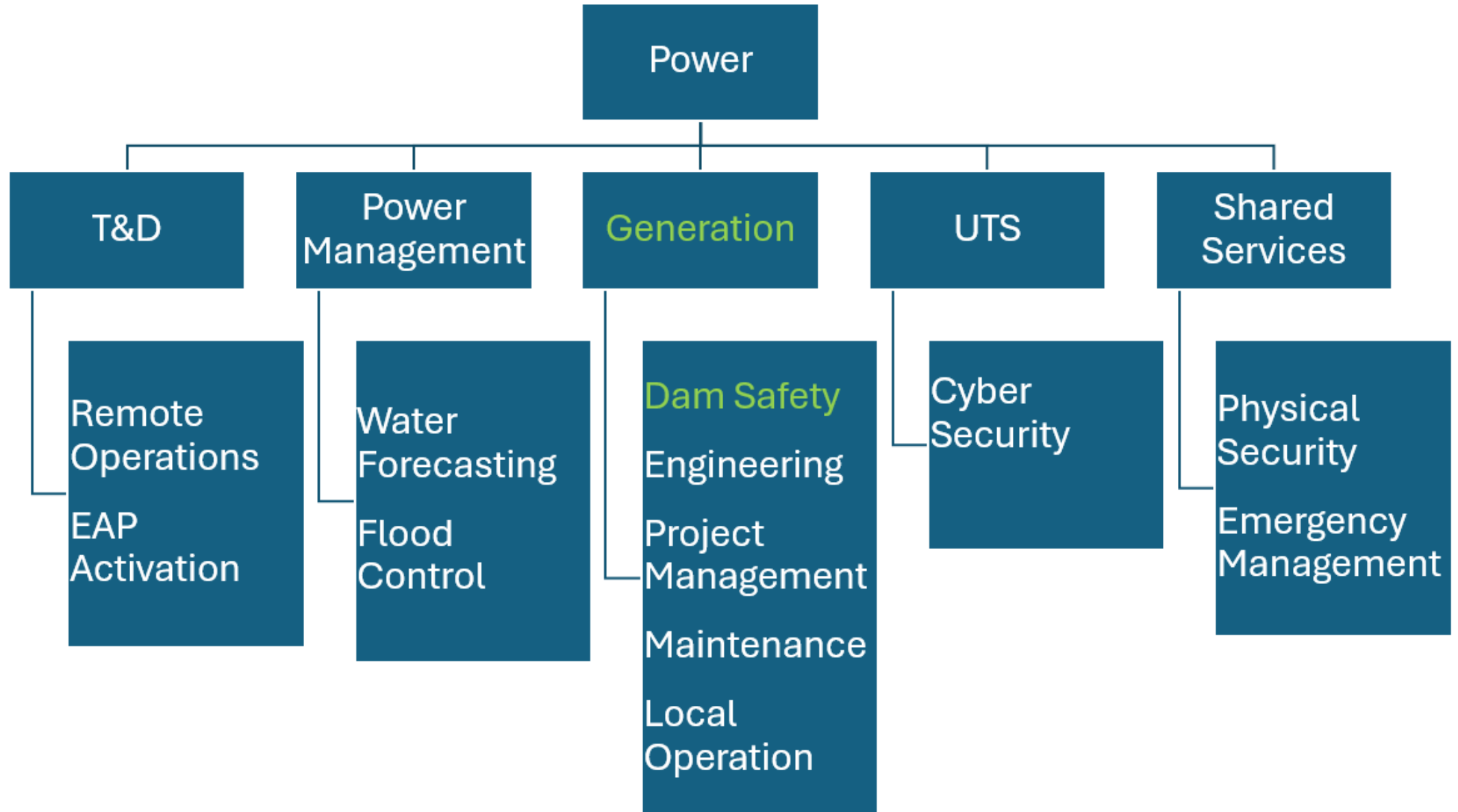
Regulatory Compliance



Ownership Risk

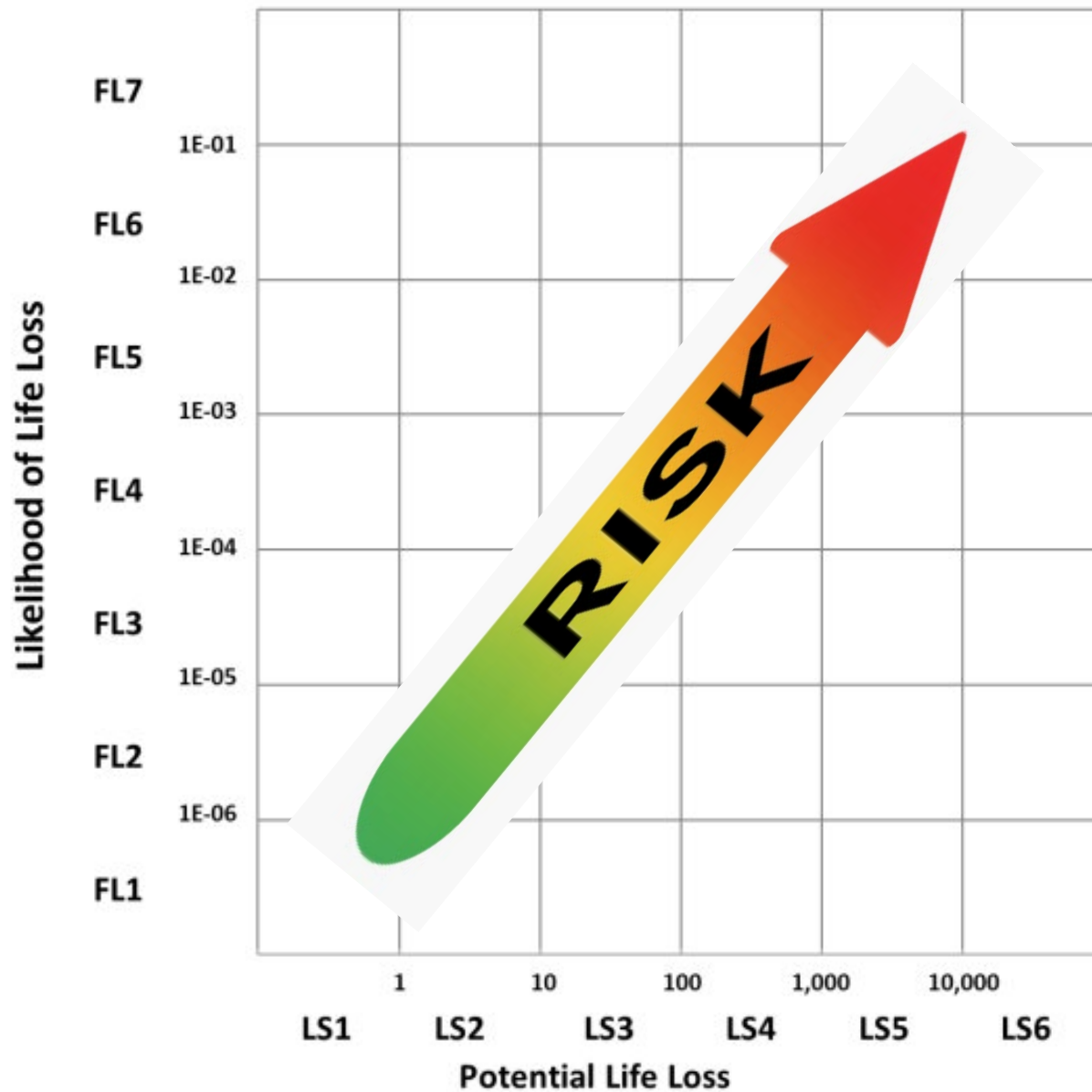
Public Safety

Distributed Responsibilities



- **Independent Consultant Safety Inspections (Part 12)**
- **Change in Seismic and Flood Hazards**
- **Behavioral changes of dams**
- **Regulation and Guidance Changes**
- **National Dam Safety Incidents**
- **Safety-Related Incident Reporting**
- **Risk Informed Decision Making (RIDM)**

FERC RIDM - Estimating



FERC RIDM – Estimation Certainty

Operation change and Investment
Decision Making

4

Prioritization of Analyses

3

2

Mossyrock

Prioritization of Dams

1

Cushman 1, Mayfield, Alder, LaGrande,
Cushman 2, Wynoochee

Confidence &
Certainty in
Risk Estimation

- **Refinement of Risk Understanding**
- **Interim Risk Reduction Measures**
- **Permanent Risk Reduction Measures**
- **Acceptance of Risk**

Cushman

- Large Seismic Hazard
- Design Age
- Rapid Downstream Inundation
- Small Population Downstream

Cowlitz

- Large Seismic Hazard
- Spillway Pier Stability, Embankment Dam Stability (Mossyrock)
- Stability Sensitivity to elevated lake levels (Mayfield)
- Large Population Downstream

Nisqually

- **Medium Seismic Hazard**
- **Minimal Flood Control Capacity**
- **Medium Population Downstream**

Wynoochee

- Extreme Seismic Hazard
- Small Population Downstream

Public Safety Compliance

- **Emergency Action Plan (EAP)**
- **EAP Functional Exercises**
- **Public Safety Plans**
- **Security Plans and Vulnerability Assessments**
- **FERC Security Inspections**

Public Safety Improvements

- **Emergency Management Agency engagement**
- **Incident Command Structure integration EAP-EOP**
- **Continuity of Operation Plan Integration**
- **Wildfire Response Plan – Debris Management**
- **Community outreach with CXEA**
- **Physical and Cyber Security improvements**
- **Improved remote monitoring of dam**

Program Highlights and Risk Reduction Activities

Cushman 1

**FERC Board of Consultants Oversight
Phase 1 Seismic Stabilization - Anchoring
Arch Dam Analyses
Part 12D Independent Inspection
(Level 1 Risk Understanding)**





Mossyrock

**FERC Board of Consultants Oversight
Reservoir Restriction
Arch Dam Stability Analyses
Embankment Dam Investigation
(Level 2 Risk Understanding)**



Mayfield

**Seismic Stabilization - Anchoring
Inundation Modeling
(Level 1 Risk Understanding)**

Alder

Spillway Opening Alert Siren
(Level 1 Risk Understanding)





LaGrande

Powerhouse Tramway Foundation Investigation
(Level 1 Risk Understanding)

Wynoochee

Screening Level Seismic Analyses
Inundation Modeling
(Level 1 Risk Understanding)



Cushman 2

**Updated Monitoring Program
Penstock Slope Risk Understanding
(Level 1 Risk Understanding)**



**Investigations
Analyses
Community Engagement
Capital Investment**

Thank you for your continued support