

Facts about Advanced Meters and Radio Frequency Emissions

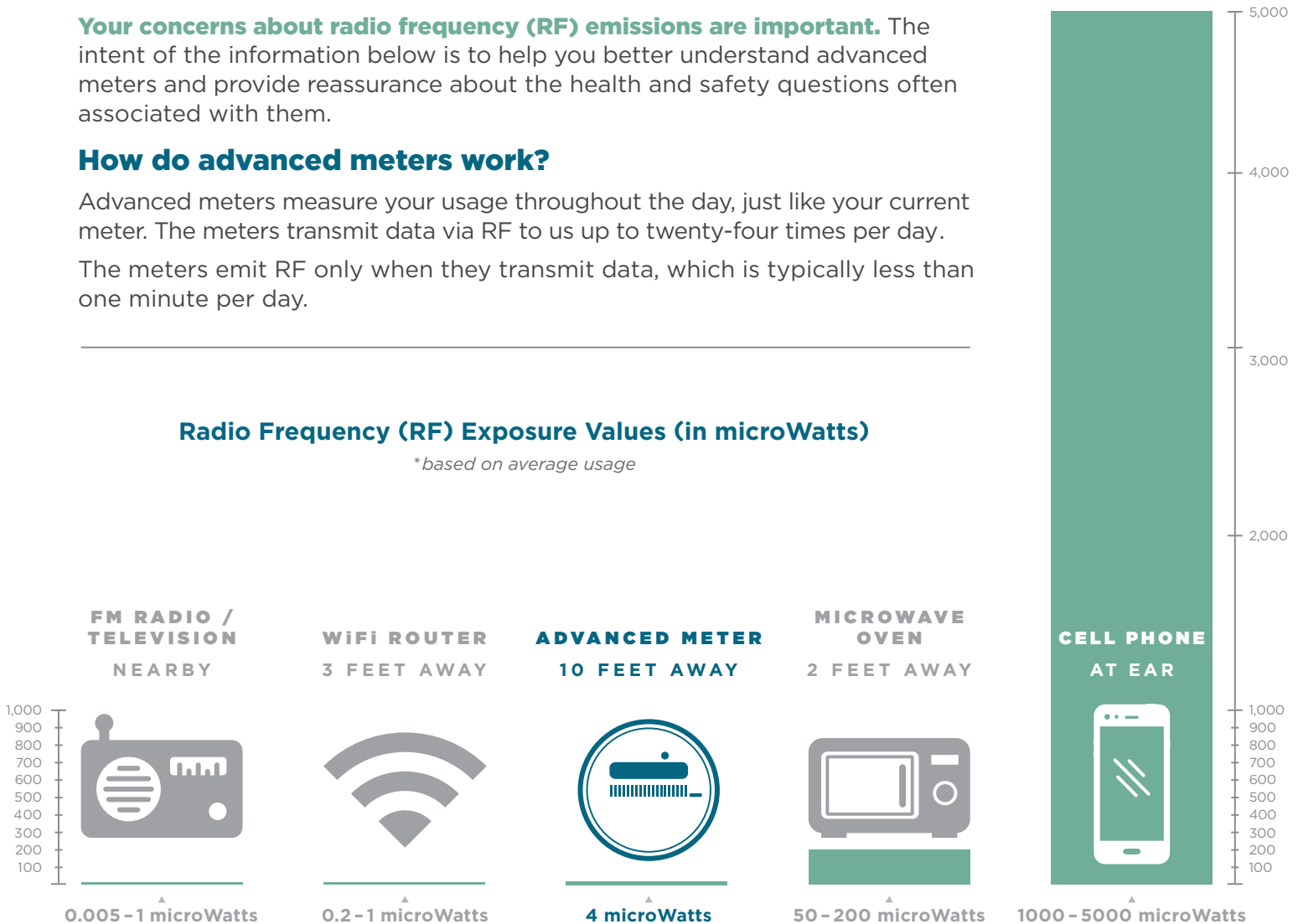
Your concerns about radio frequency (RF) emissions are important. The intent of the information below is to help you better understand advanced meters and provide reassurance about the health and safety questions often associated with them.

How do advanced meters work?

Advanced meters measure your usage throughout the day, just like your current meter. The meters transmit data via RF to us up to twenty-four times per day. The meters emit RF only when they transmit data, which is typically less than one minute per day.

Radio Frequency (RF) Exposure Values (in microWatts)

**based on average usage*



Scientific Research about Advanced Meters and Health

- A study by Washington State University determined the amount of energy absorbed from advanced meter radio frequency is substantially less than the Federal Communications Commission (FCC) safety guidelines, even when a person stands close to a meter.
- Based on its review of scientific literature, The World Health Organization concluded there is no convincing evidence that the weak RF signals produced by advanced meters are harmful to human health.

continued on reverse ►

- According to a study conducted by the California Council on Science and Technology, “wireless smart meters result in much smaller levels of RF exposure than many existing common household electronic devices, particularly cell phones and microwave ovens.”

For over 50 years, researchers have studied the potential health impacts of RF energy. With the expansion of cell phone use in the last several decades, experts have published numerous studies about RF energy and cell phones. Research specific to advanced meters concludes that RF energy emitted from them is much lower than from cell phones.

Reputable organizations across the world have reviewed the scientific literature about RF energy. The conclusion among them is **advanced meters do not result in adverse health impacts.**

Your safety is important, and we will continue to review scientific research about the impacts of RF energy.

Scientific Literature

- **Washington State University**
Zhou, L. & Schneider, J. B. (2012). A Study of RF Dosimetry from Exposure to an AMI Smart Meter. *IEEE Antennas and Propagation Magazine*, Vol. 54, No. 6.
- **World Health Organization**
Electromagnetic Fields and Public Health: Base Stations and Wireless Technologies Backgrounder (2006). Retrieved from who.int/peh-emf/publications/facts/fs304/en/.
Electromagnetic Fields and Public Health: Mobile Phones (2014). Retrieved from who.int/mediacentre/factsheets/fs193/en/.
- **European Health Risk Assessment Network**
Valberg, P.A., van Deventer, E., Prepacholi, M.H. (2007). [Workgroup Report: Base Stations and Wireless Networks – Radiofrequency \(RF\) Exposures and Health Consequences](#), *Environmental Health Perspectives*, vol. 115 (number 3), pages 416-424.
- **International Commission on Non-Ionizing Radiation Protection**
Swerdlow, A., Feychting, M., Green, A.C., Kheifets, L. Savitz, D.A. (2011). Mobile Phones, Brain Tumors, and the Interphone Study: Where Are We now?, *Environmental Health Perspectives* (vol. 119), pages 1534-1538. Retrieved from <https://www.ncbi.nlm.nih.gov/pmc/articles/PMC3226506/>.
- **California Council of Science and Technology**
California Council of Science and Technology (2011). *Health Impacts of Radio Frequency Exposure from Smart Meters*. <https://ccst.us/publications/2011/2011smart-final.pdf>.
- **Health Protection Agency (England)**
Health Effects from Radiofrequency Electromagnetic Fields. (2012). Retrieved from https://www.gov.uk/government/uploads/system/uploads/attachment_data/file/333080/RCE-20_Health_Effects_RF_Electromagnetic_fields.pdf
- **European Commission**
SCENIHR Opinion on Potential health effects of exposure to electromagnetic fields (2015). Retrieved from http://ec.europa.eu/health/sites/health/files/scientific_committees/emerging/docs/scenihr_o_041.pdf.
- **Electric Power Research Institute (EPRI)**
Radio-Frequency Exposure Levels from Smart Meters: A Case Study of One Model (February 2011).

Opt-Out Policy

We are committed to high quality customer service and are developing a policy to provide you with options.

If you do not want a communicating advanced electric meter, you will have the option to receive an advanced electric meter with the radio frequency transmitter disabled. Opting out will likely require you to pay a fee for ongoing manual billing, which is an industry custom. You can sign up for our newsletter to receive updates about the policy.