

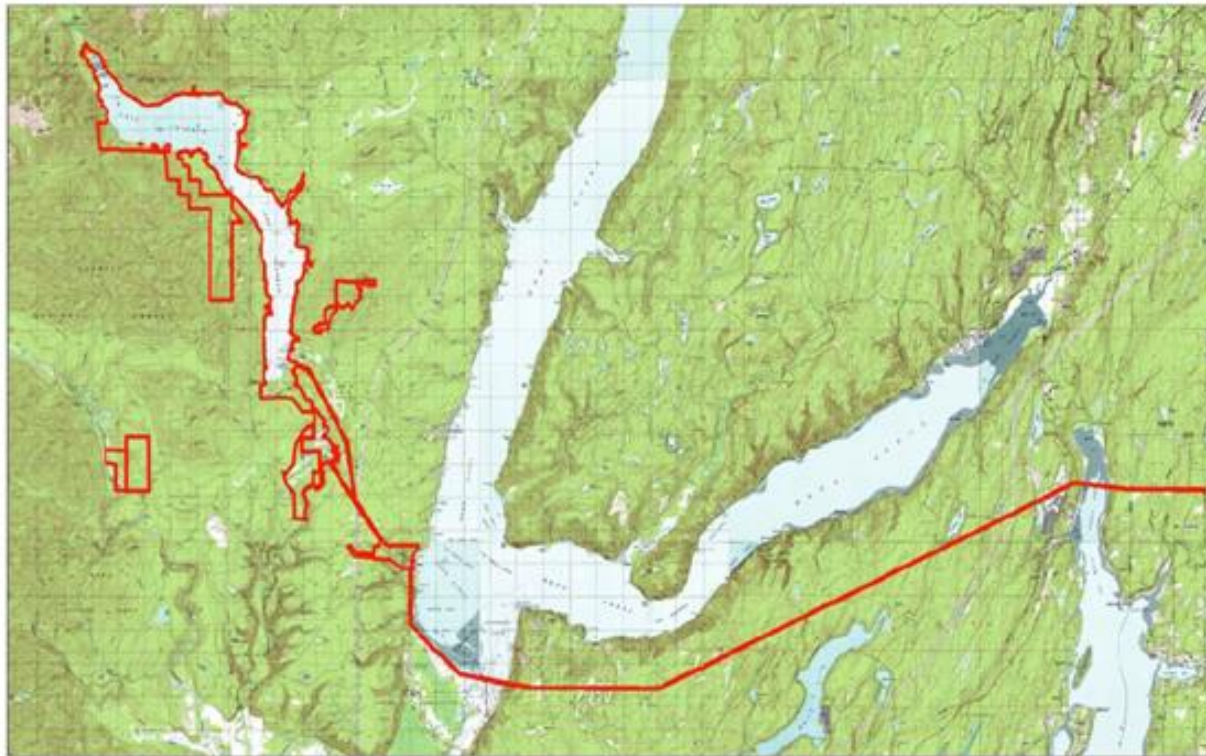
# Cultural Resource Management at the Cushman Hydroelectric Project



Dylan Henderson, Cultural Resources Coordinator

Sept. 12, 2019

# Overview of the Cushman Project



- Total Project area is over 7,000 acres
- 44 miles of transmission (Potlatch line)
- Includes lake and marine shorelines, uplands, and various habitat lands
- Cushman #1 Dam, completed in 1925
- Cushman #2 Dam, completed in 1930

Overview Map - APE

 FERC Boundary



# What are Cultural Resources?

**CULTURAL RESOURCES**

- ARCHAEOLOGICAL SITES;
- HISTORICAL SITES;
- BUILDINGS;
- STRUCTURES;
- DISTRICTS;
- CORRIDORS; AND,
- OBJECTS,



The collage consists of four rectangular images. The first image shows a long, dark, flaked stone tool, possibly a spearhead or knife, lying on a bed of small, light-colored gravel. The second image shows a person's hand reaching towards the ground in a natural setting. The third image is a close-up of the corner of a log cabin, showing the intricate joinery of the wooden logs. The fourth image shows a small, dark, historic-style building with a white chimney, situated in a green field with mountains in the background.

- Must be at least 50 years old, or older
- Associated /representatives of peoples, cultures, human activity, and/ or past events
- Considered significant if they are eligible for listing in federal, state and/or local heritage registers for their association with an important historic event, person, moment, architectural style, or data potential

# Rules And Regulations

## Federal

- Antiquities Act - 1906
- Historic Sites Act - 1935
- National Historic Preservation Act - 1966

## Washington state

- Archeological Site/Resource Act (RCW 27.53)
- Archaeological and Cultural Resources EO 05-05
- Indian Graves and Records Act (RCW 27.44)

## Tacoma Power

- Compliance per Cushman FERC License -- Article 429 requires a Historic Properties Management Plan (HPMP).



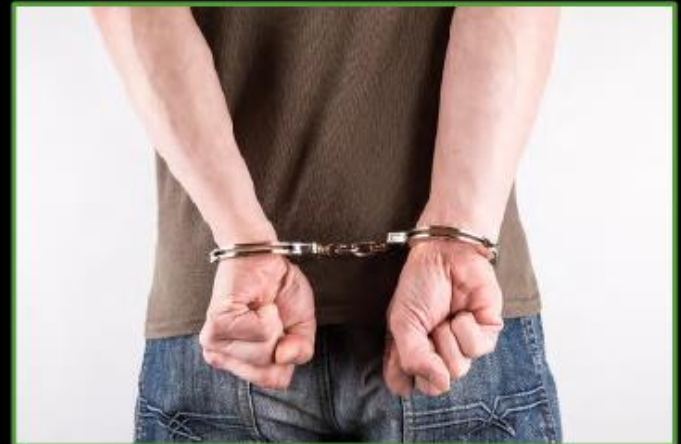
# Washington State RCWs

## RCW 27.53 AND RCW 27.44

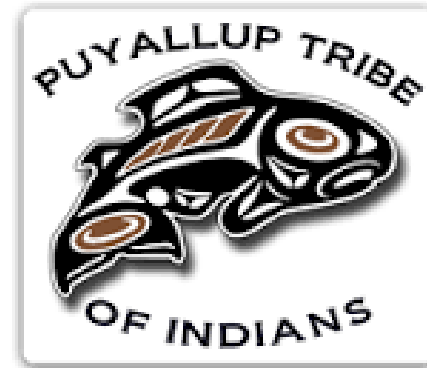
MISDEMEANOR TO KNOWINGLY DISTURB  
AN ARCHAEOLOGICAL SITE ON PUBLIC OR  
PRIVATE LAND IN WASHINGTON STATE.

CLASS C FELONY TO DISTURB AN INDIAN  
GRAVE OR ASSOCIATED ARTIFACTS OR  
GRAVE GOODS.

POSSIBLE PENALTY OF UP TO 5 YEARS IN  
PRISON AND \$10,000.00 FINE.

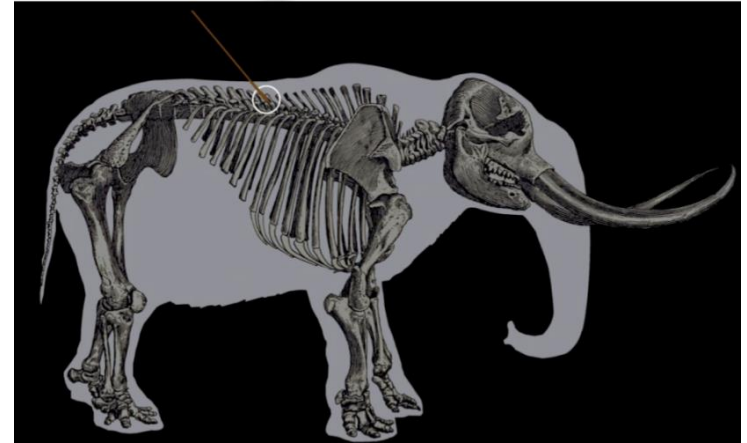


# Cultural Resource and Stakeholders and Consulting Parties



# Pre-Contact Archaeological Resources in Western WA.

- Pre-date Euroamerican settlement, circa 1850's
- Shell middens, stone tool making sites, and fishing and hunting camps.
- 13,800 yr. old Manis Mastodon Site
- Ozette Village Landslide Site -1750



# Prehistoric Sites at Cushman

- Shell Middens
- Culturally Modified Trees
- Chipped stone Scatters
- Prehistoric Hunting-Blinds
- Quarry Sites
- Rock Shelters
- Seasonal Camps

Oldest  
Cushman site  
dated at 9,000  
years old



# Historical Resources in Western Washington

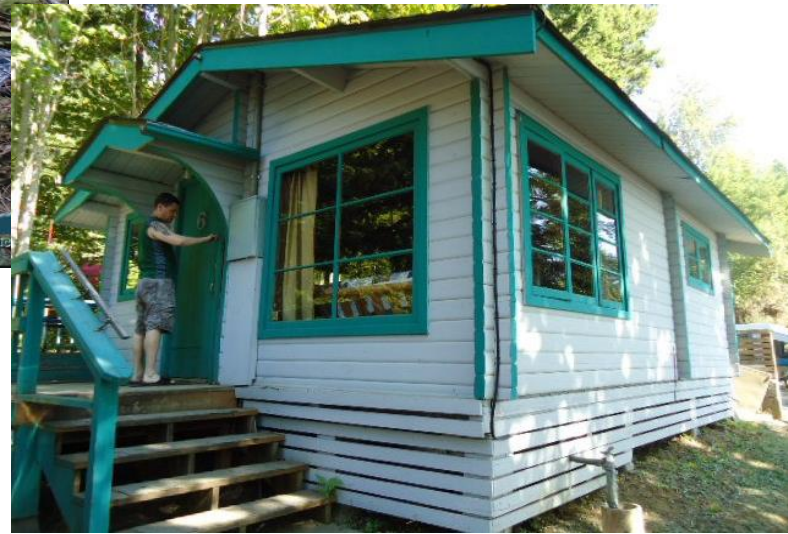
Historic Resources dating from the 1850's through the 1960's.

Historic period archaeological sites and historic properties

- Various buildings and structures
- Logging features, railroad grades, and bridges
- Cemeteries
- Homesteads
- Abandoned towns



# Cushman Historic Resources



# How Do We Manage All of These Resources?

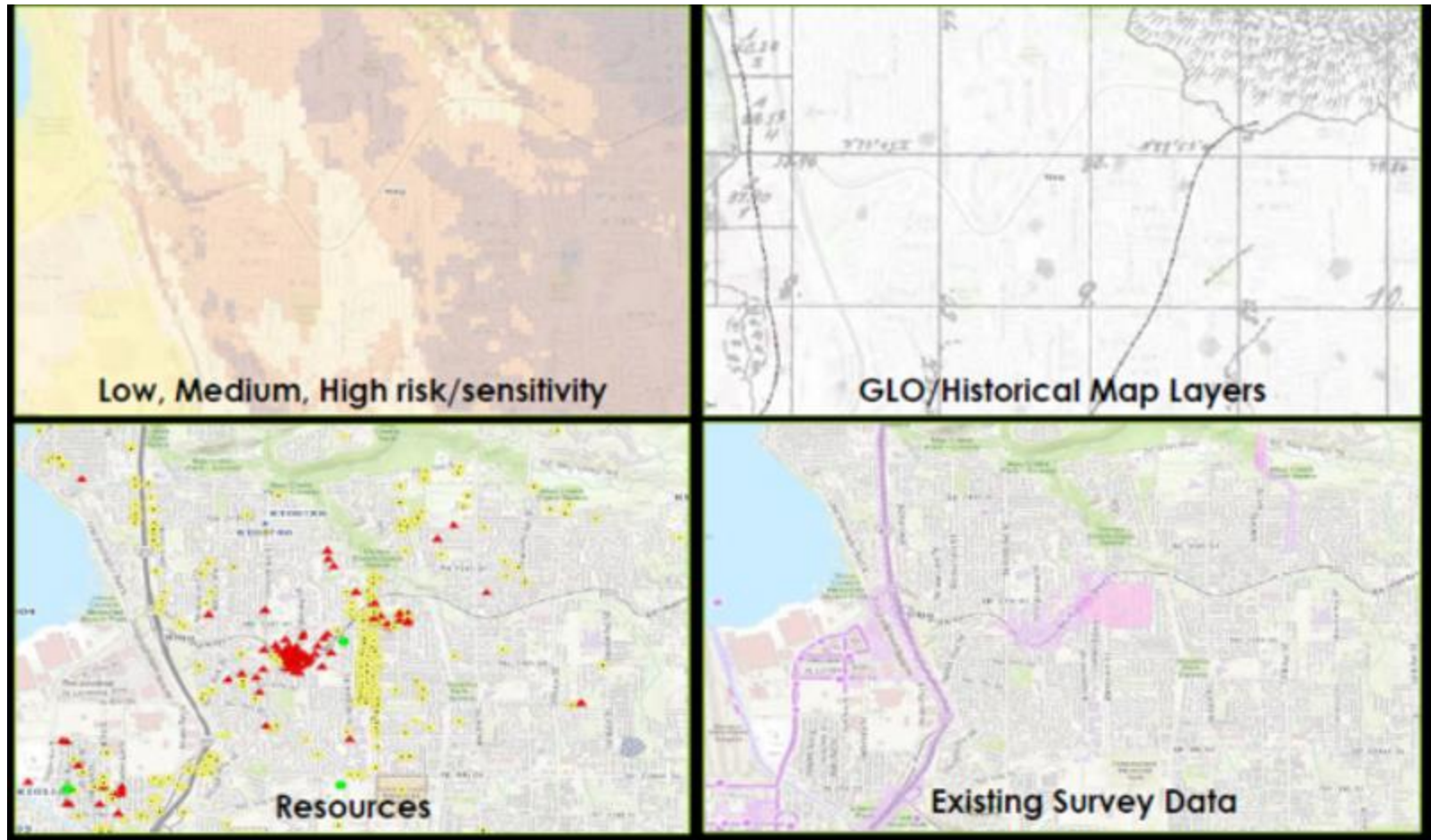
- Historic Properties Management Plan



- Monitoring Plan
- Inadvertent Discovery Plan



# Predictive Modeling and Research



# Why are Cultural Resources Important?

- Regulations and license requirements make stewardship of non-renewables our responsibility.
- “The Greenest Building” is the one that is already built.
- Tangible connection and understanding to our past.
- To many tribal members pre-contact archaeological resources represent connections to their ancestors.



# What should you do?

STOP – TAKE A TIME OUT!

DETERMINE WHAT THE DISCOVERY MIGHT BE AND IF YOU THINK THERE IS AN ARCHAEOLOGICAL SITE CALL AN ARCHAEOLOGIST.

If the site is found within Tacoma Power property, you can call me at (253) 779-7735.

Or the DAHP @ (360) 586-3065.

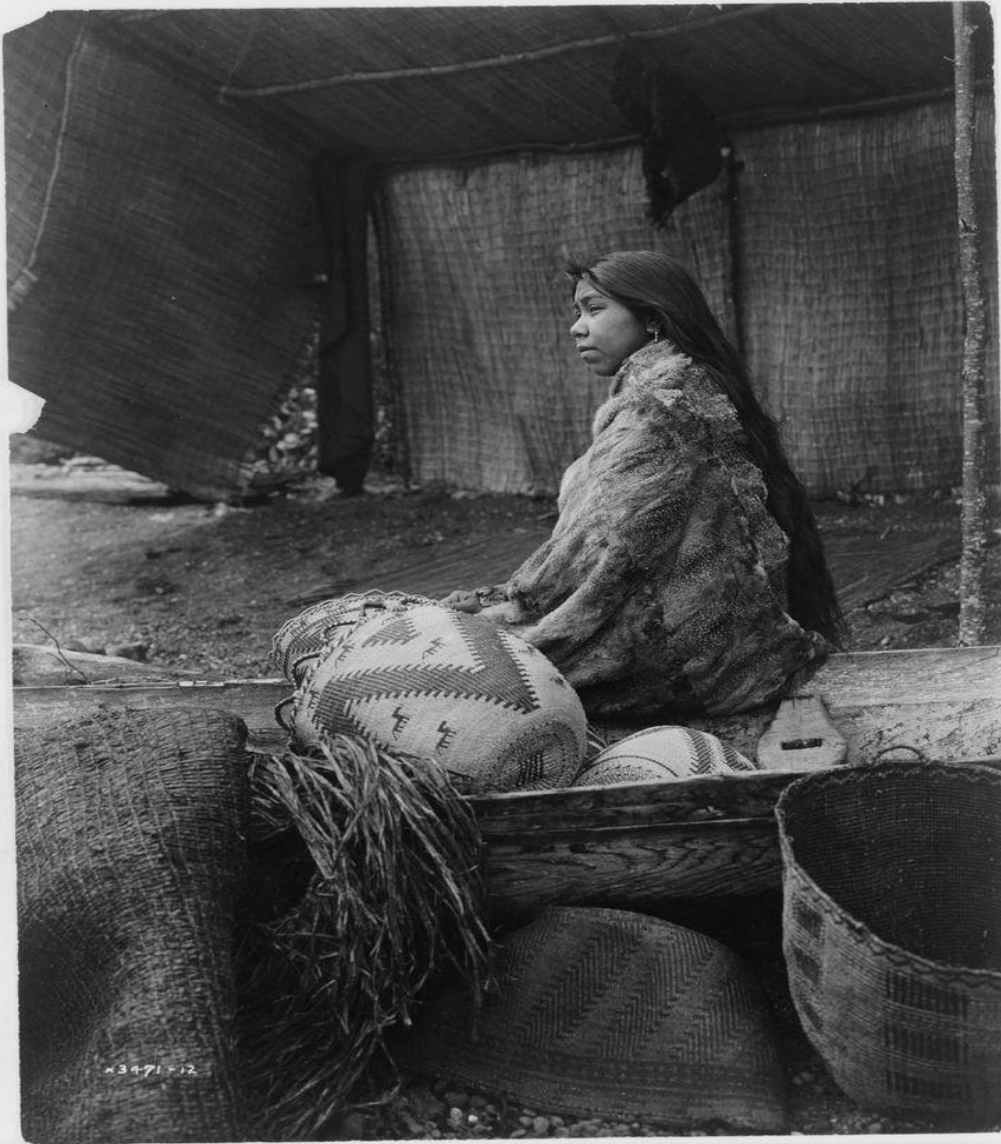
If you encounter bones that you think might be human contact your local Law Enforcement Agency.

Do NOT post on social media!!!





## Skokomish River or Hood Canal of Skokomish Indian Chief's Daughter- circa 1913



Who took this photo?

Edward Curtis

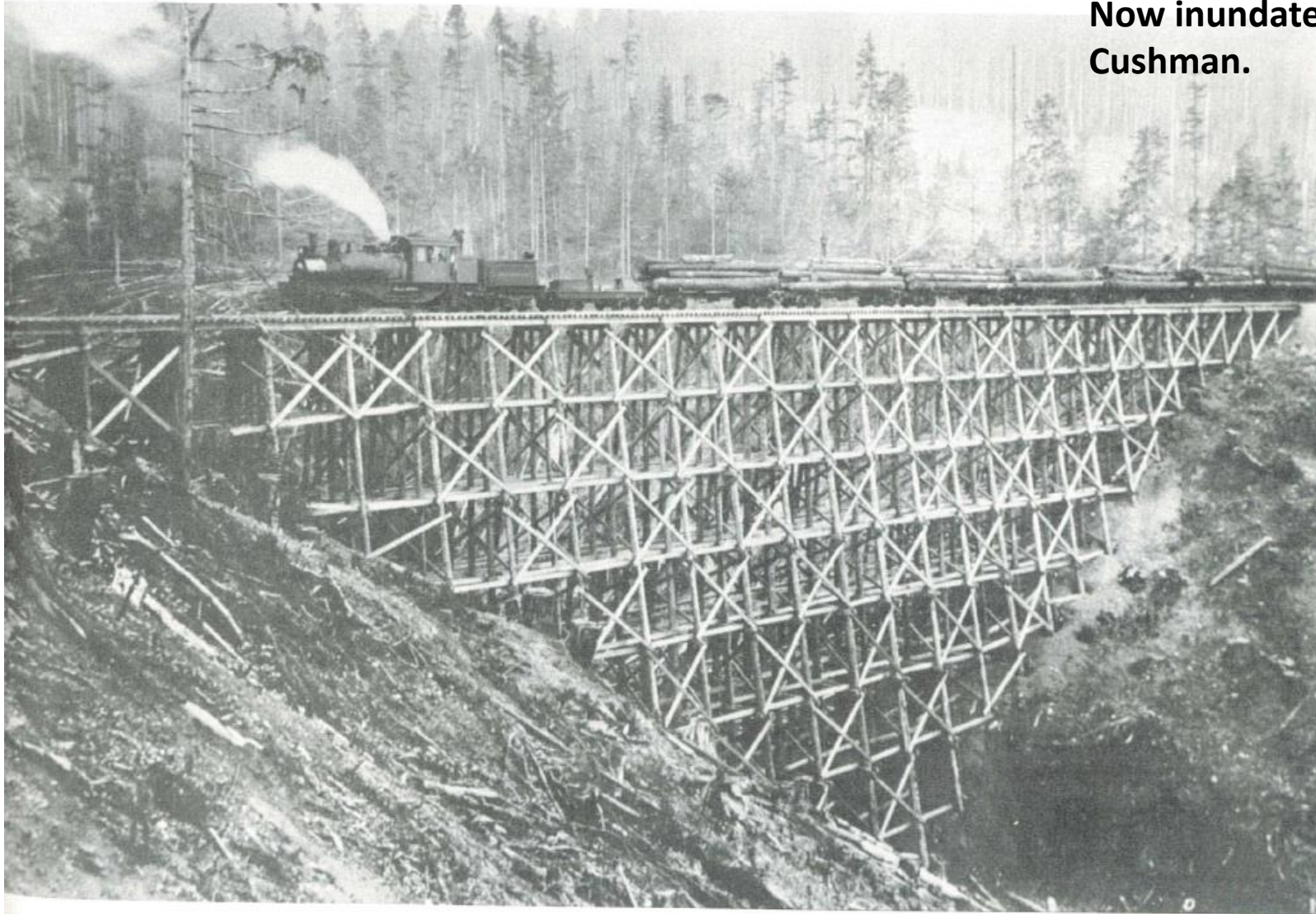
Famous photographer of the American West.

# Where is This?



1924,  
Spanning the  
Tacoma  
Narrows  
Crossing for  
transmission  
and  
distribution  
into the City  
of Tacoma.

**Phoenix Logging Trestle,  
photo taken in 1913.  
Now inundated by Lake  
Cushman.**



**In 1909, Theodore “Teddy” Roosevelt visited the “Original Lake Cushman” while setting aside 45,000 acres of land for what would later become Olympic National Park.**

Questions?