

All-H Salmon and Steelhead Recovery in the Lower Columbia River Region

Cowlitz Annual Program Review and Science Conference

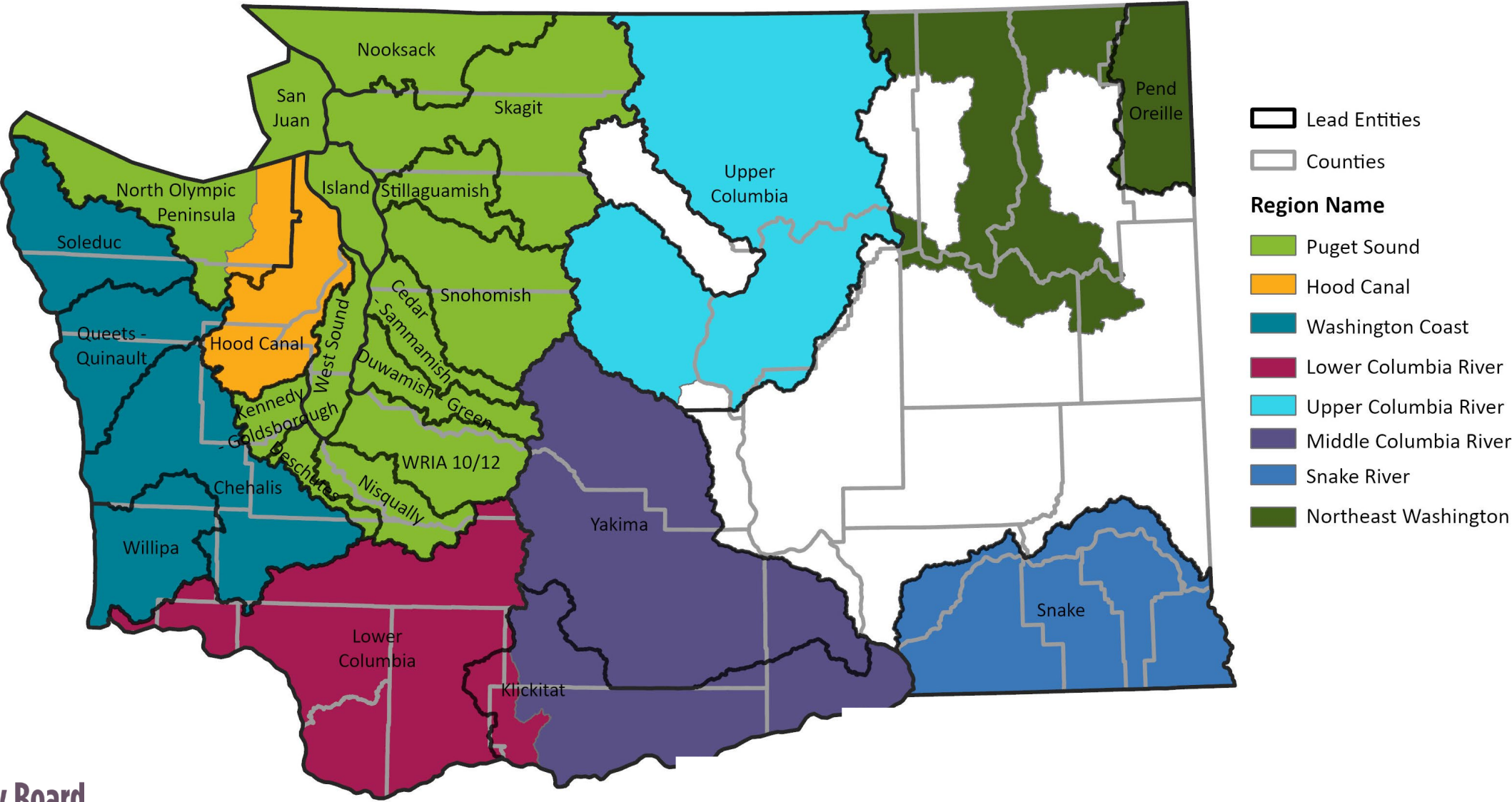
April 22, 2026



**Lower
Columbia
Fish Recovery Board**

Amelia Johnson, Science Program Lead

Washington Salmon Recovery Act (RCW 77.85)



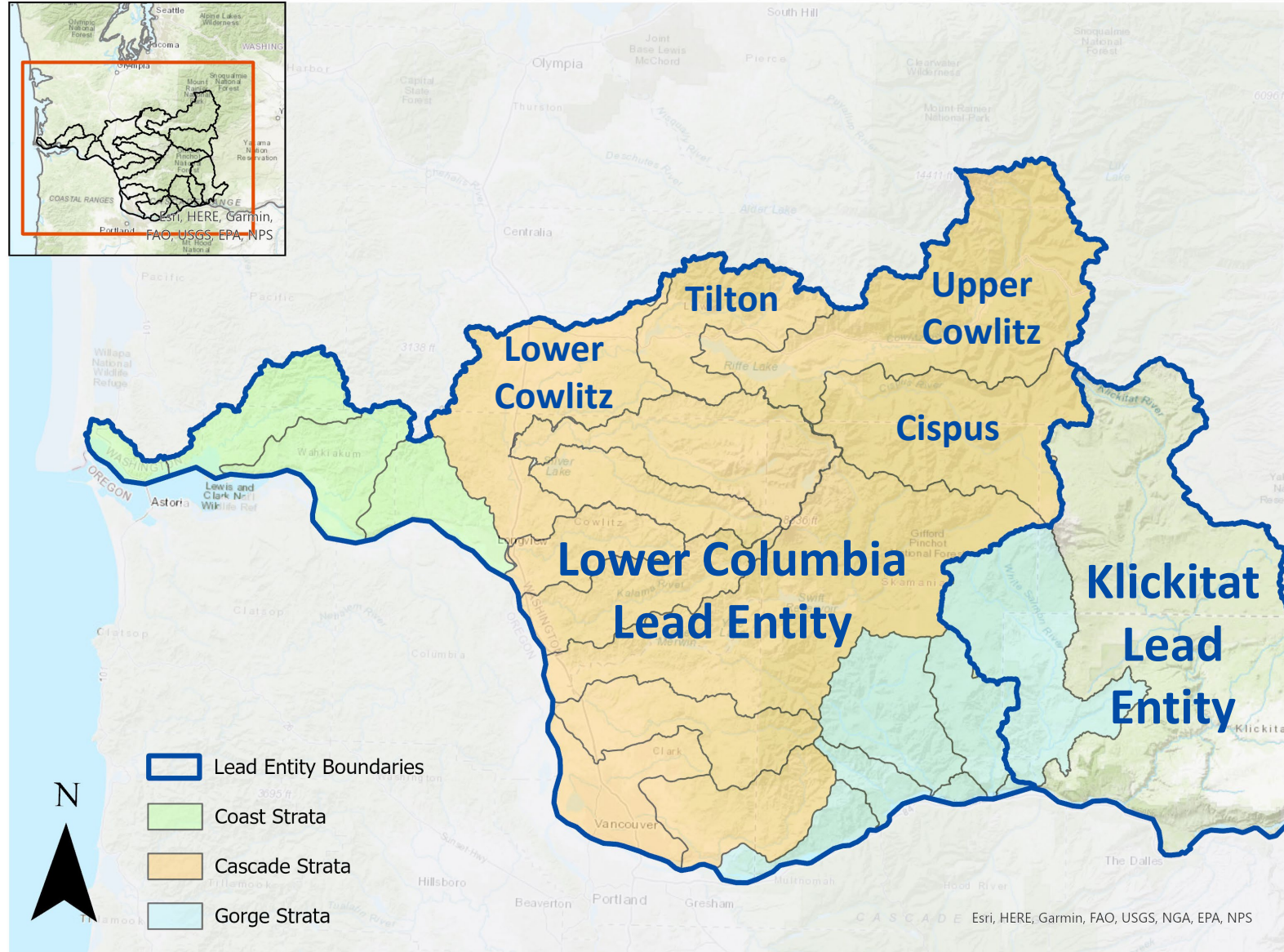
All-H Recovery Approach



Recovery Scenario

4 ESA-Listed Species

- Columbia River Chum Salmon
- Lower Columbia River Chinook Salmon
- Lower Columbia River Coho Salmon
- Lower Columbia River Steelhead



Recovery Progress

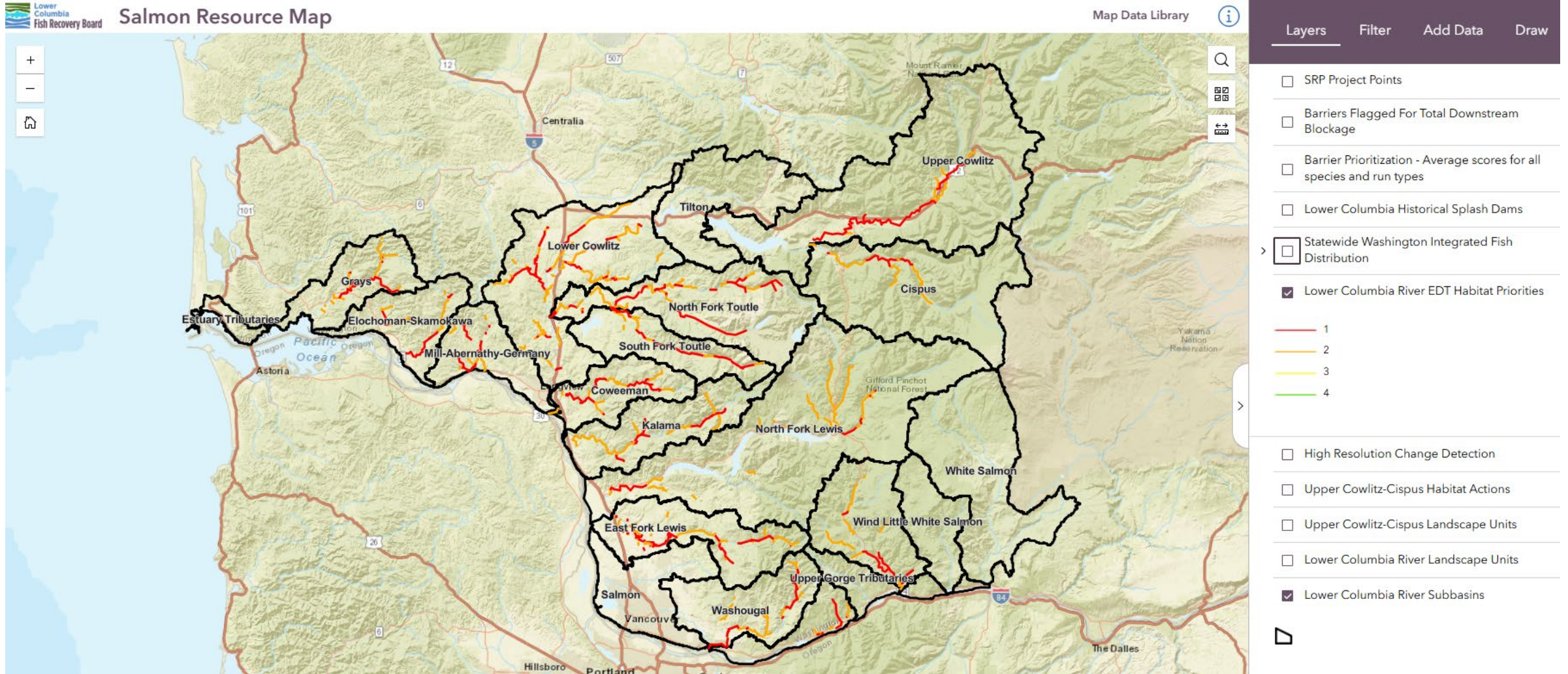
Run	Population	Designation	2019-23 Natural Origin Abundance	% of Goal	ESA Delisting Goal
Fall Chum	Cowlitz	Contributing	NA	NA	900
Summer Chum	Cowlitz	Contributing	NA	NA	900
Fall Chinook	Lower Cowlitz	Contributing	11,065	369%	3,000
Coho	Lower Cowlitz	Primary	4,736	128%	3,700
Winter Steelhead	Lower Cowlitz	Contributing	240	60%	400
Spring Chinook	Tilton	Stabilizing	NA	NA	<100
Coho	Tilton	Stabilizing	3,041	NA	NA
Winter Steelhead	Tilton	Contributing	120	60%	200
Fall Chinook	Upper Cowlitz	Stabilizing	806	NA	NA
Spring Chinook	Upper Cowlitz + Cispus	Primary	316	9%	3,600
Coho	Upper Cowlitz + Cispus	Primary	3,948	99%	4,000
Winter Steelhead	Upper Cowlitz + Cispus	Primary	296	30%	1,000

Regional Habitat Strategy

- Ensure habitat restoration efforts address limiting life stages of salmon and steelhead
- Reconnect and protect key habitats.
- Large-scale efforts likely necessary to support population growth and recovery

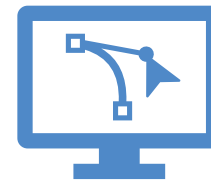


Habitat Impacts



Habitat Restoration

\$100+ million in Salmon Recovery Funding Board grants funds spent and allocated



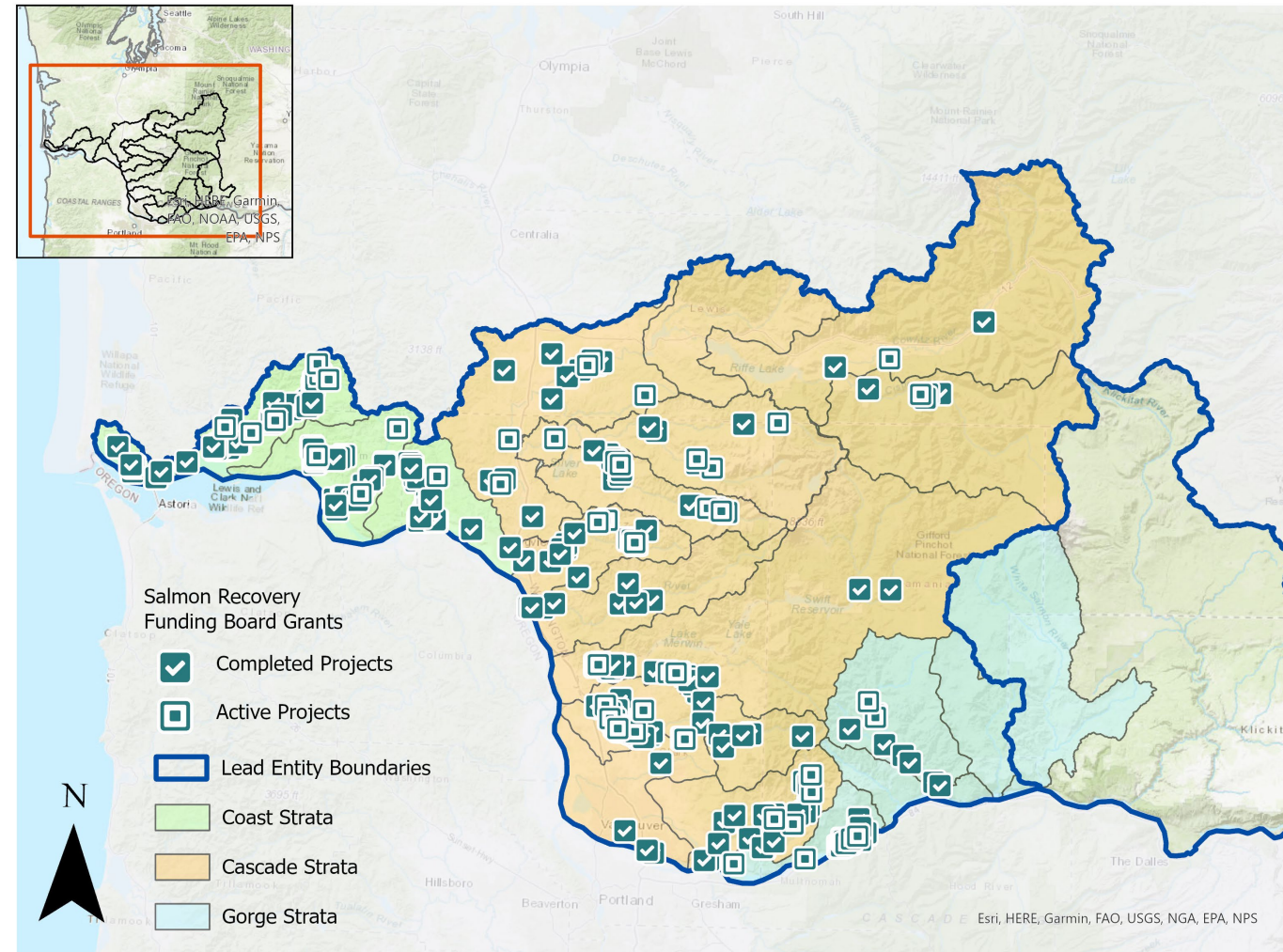
70+ designs covering 6,000+ acres of habitat



150+ projects enhancing 120+ miles of stream habitat

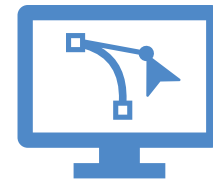


130+ projects restoring 2,000+ acres of riparian habitat along 200+ miles of stream channel



Habitat Restoration

\$4.5+ million in Cowlitz Restoration & Recovery grants allocated to habitat projects, leveraging \$1.7 million in matching resources.



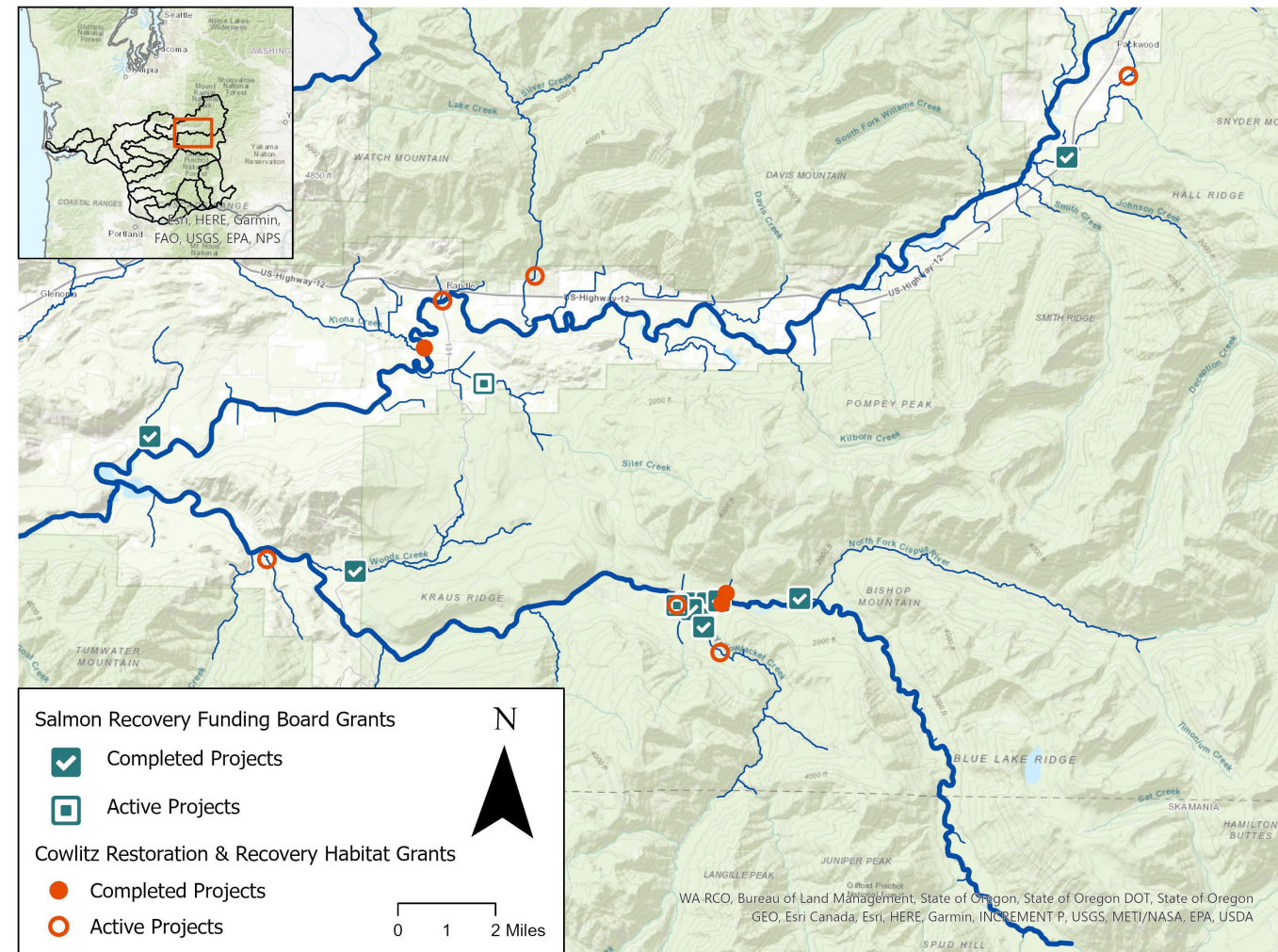
5 designs covering 200+ acres of habitat



4 projects enhancing 1.8 miles of stream habitat

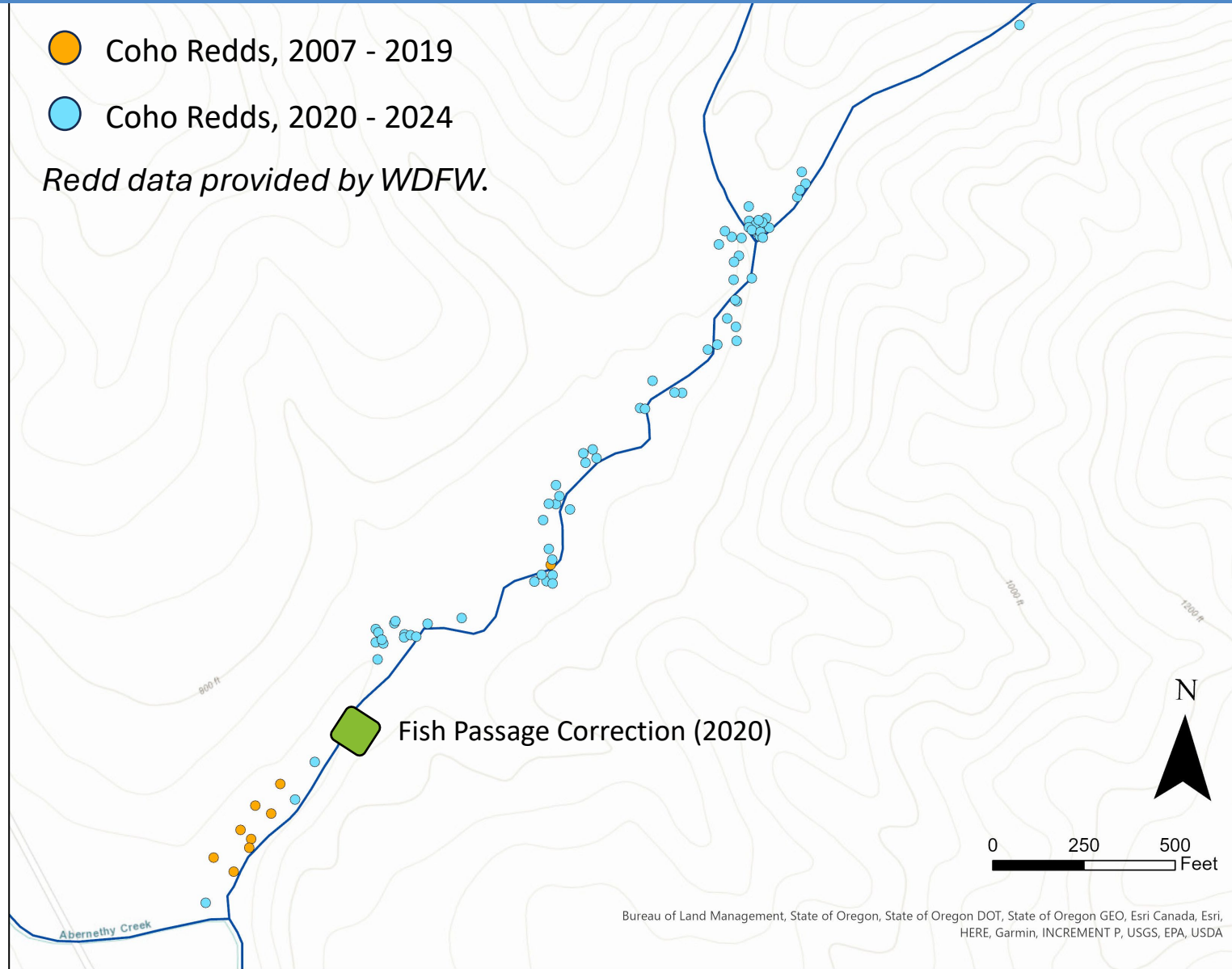


4 projects restoring 13+ acres of riparian habitat along 2+ miles of stream channel



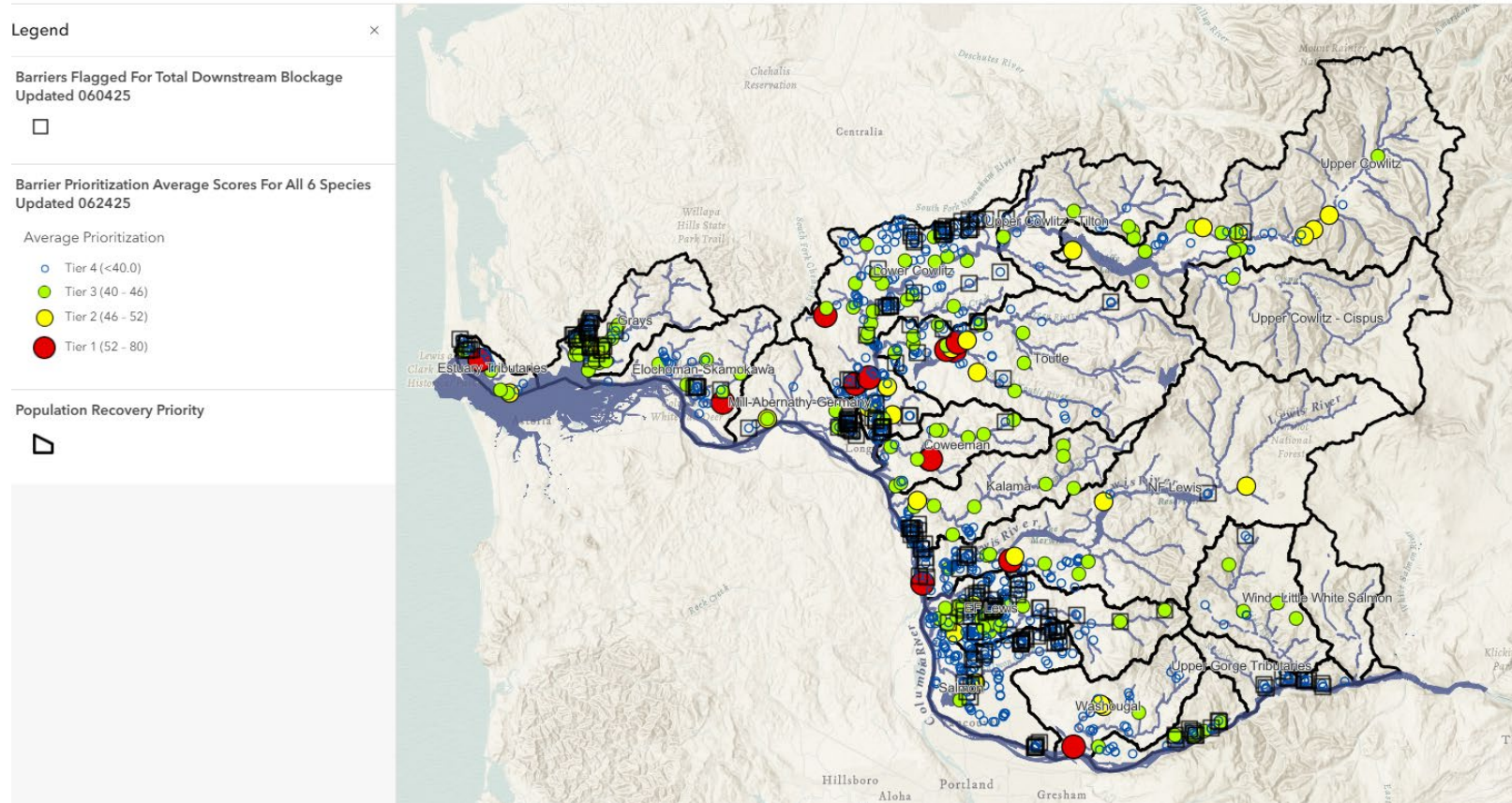
Fish Passage

Improving fish passage is one of the most certain restoration strategies.



Fish Passage

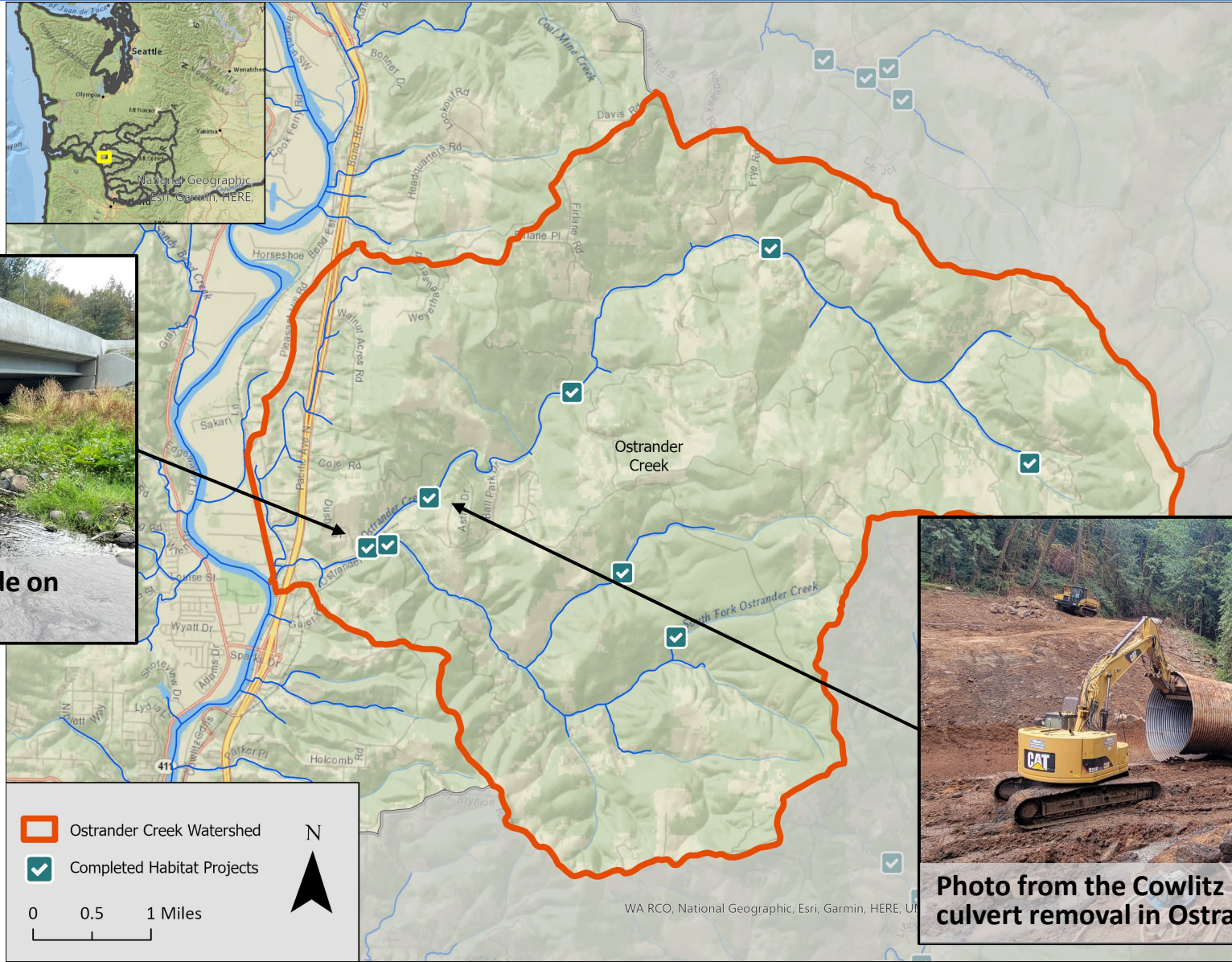
Lower Columbia Barrier Inventory & Decision Support Tool



Improving fish passage is one of the most certain restoration strategies.

Coho salmon are especially impacted by non-hydropower, artificial barriers

Fish Passage



Cowlitz County bridge upgrade on Ostrander Road



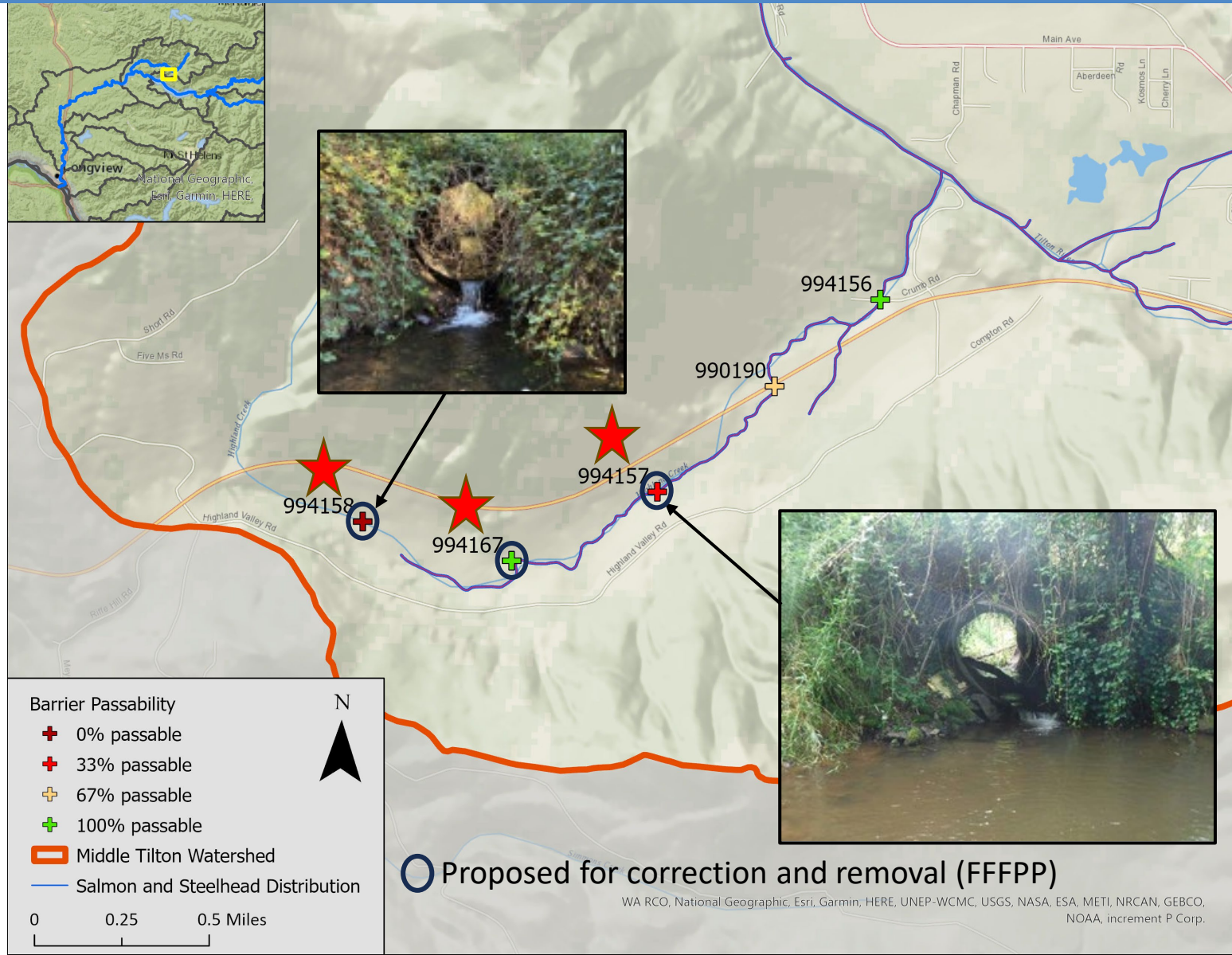
Photo from the Cowlitz Indian Tribe – culvert removal in Ostrander Creek

Fish Passage



48 road culverts assessed by the Lewis Conservation District in the Cowlitz, Cispus, and Tilton basins

About half (27) identified as less than 100% passable



Collaborative Recovery Programs

- Strengthens alignment between recovery priorities and Utility and other program goals and efforts
- Builds upon and leverages well established and successful grant programs
- Supports long-term recovery planning and implementation efforts



Thank you for supporting salmon recovery!



**Lower
Columbia
Fish Recovery Board**

www.lcfrb.org
ajohnson@lcfrb.org