

2017 Tacoma Public Utilities QUICK FACTS

OUR MISSION

Tacoma Public Utilities provides services that are vital to our quality of life.

Power • Water • Rail • Click!



1,378
EMPLOYEES

NOTEWORTHY

- TPU volunteer program wins first employer-based Governor's Volunteer Service Award

REVENUE & BUDGET



2016 operating revenue

• **\$542.2** MILLION

2015-2016 budget

• **\$1.2** BILLION



LEADERSHIP

{ We are governed by a five-member utility board, the members of which appoint the Director of Utilities. Board members serve five-year terms. }

BOARD

Mark Patterson, chair | Monique Trudnowski, vice-chair
Woodrow Jones, secretary | Bryan Flint | Karen Larkin

MANAGEMENT

Bill Gaines • Director of Utilities / CEO
Chris Robinson • Tacoma Power Superintendent
Dale King • Tacoma Rail Superintendent
Steve Hatcher • Customer Services Manager
Jim Sant • Deputy Director for Administration

SERVING OUR COMMUNITY

TPU HELPED **3,561**



HOUSEHOLDS PAY THEIR
UTILITY BILLS WITH

\$659,804

IN ASSISTANCE

In addition,
TPU gave qualifying
seniors and adults receiving
disability benefits more
than **\$2.1 million**
in discounted utility bills.

COMMUNITY CONNECTION

EMPLOYEES VOLUNTEERED

2,148 HOURS

WITH LOCAL NONPROFIT ORGANIZATIONS AND

GAVE
MORE
THAN

\$321,600

IN CASH, PRODUCTS, AND VOLUNTEER TIME

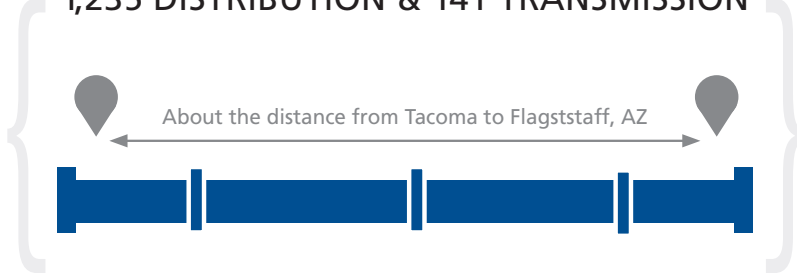
Community engagement, emergency preparedness and improved planning were the themes of 2016 for Tacoma Water. The utility continued to make progress on its strategic plan, ensuring that work is prioritized and adequately resourced, that actions are planned, progress is measured, and issues are resolved.



MAINS & SERVICE AREA

117
square miles of service area

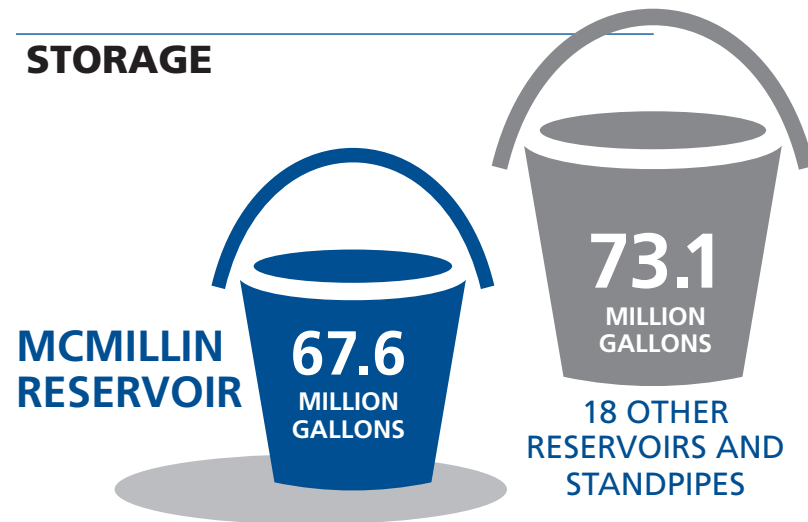
1,376 MILES OF WATER MAINS
1,235 DISTRIBUTION & 141 TRANSMISSION



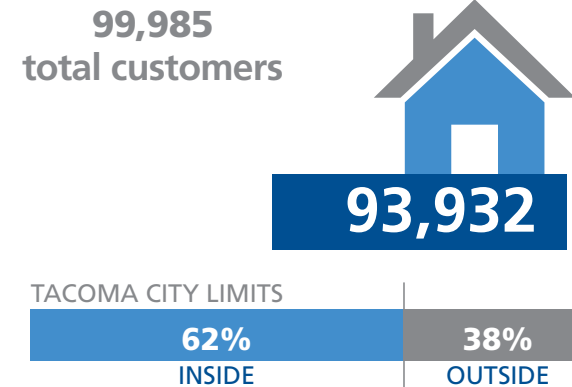
SUPPLY in million gallons per day



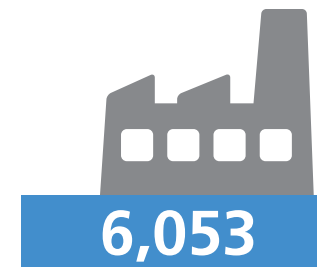
STORAGE



CUSTOMERS RESIDENTIAL

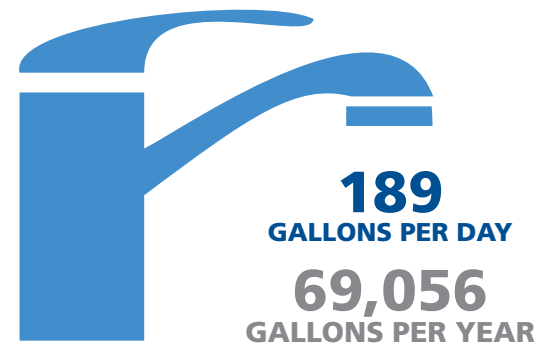


COMMERCIAL/INDUSTRIAL



People served directly by Tacoma Water 329,000
Through wholesale connections 283,800
In partner service areas 228,900

AVERAGE HOUSEHOLD USE



	Daily	Annually
2015	195	71,239
2014	186	67,923
2013	182	66,705
2012	186	67,914

6,135,931,920
TOTAL GALLONS USED IN 2016

ENVIRONMENT

WHAT WE DID TO PROTECT LAND AND WATER

- Piloted the restoration of upland habitat to provide better forage nutrition for elk and deer in the Green River Municipal Watershed; five acres were restored
- Captured 185 chinook salmon, 110 coho salmon and 14 steelhead at the Green River Trap and Sort Facility



RATES

We are proud to say that our rates are among the lowest in the region.



City of Puyallup
\$23 month
\$276 year

City of Kent
\$39 month
\$468 year

City of Bellevue
\$49 month
\$588 year



AVERAGE COST PER HOUSEHOLD

FINANCIAL

As a result of careful financial, ratemaking and risk management processes, our bond ratings are stable, which helps Tacoma Water borrow money at low interest rates. That helps keep rates low.

Value of our fixed assets
\$879.5 MILLION

Total operating revenue
\$92.8 MILLION

BOND RATINGS

Moody's **Aa2**
Standard & Poor's **AA**

TAXES WE PAY

Tacoma Gross Earnings
\$6.8 MILLION
Federal (Social Security)
\$1.5 MILLION
State
\$4.6 MILLION
Other cities' and counties' fees
\$653,192
Taxes as a percent of total revenue
15.4%



NOTEWORTHY

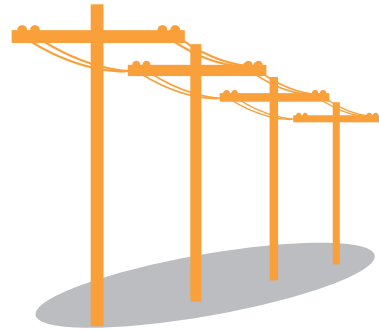
- Tacoma Water won a Platinum Award for Utility Excellence from the Association of Metropolitan Water Agencies, which includes the largest publicly owned drinking water systems in the country
- The Green River Filtration Facility completed its first full year of operation

Tacoma Power completed a new comprehensive strategic plan in 2016. The development of the plan incorporated an analysis of challenges and opportunities the utility faces, as well as feedback from customers, employees and key stakeholders. The plan will help the utility put a laser focus on a series of priority strategic objectives related to employees, customers, finances and environmental stewardship.

LINES & SERVICE AREA

180
square miles of service area

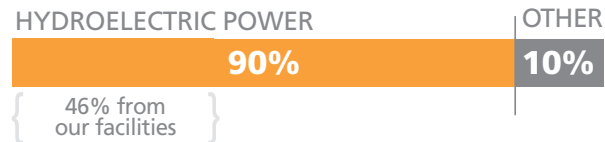
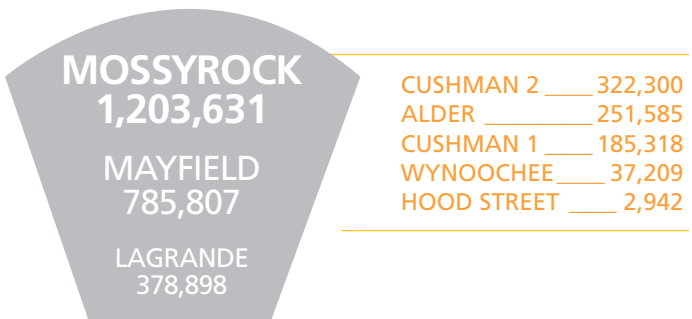
OVERHEAD
1,529
UNDERGROUND
836



2,365 MILES OF POWER LINES
2,014 DISTRIBUTION & 351 TRANSMISSION

About the distance from Tacoma to Dayton, OH

GENERATION in megawatt-hours produced per year



SUBSTATIONS

- 5 main/transmission substations
- 5 switching stations
- 49 distribution substations
- 12 dedicated distribution substations
- 23 BPA customer substations
- 8 generation switchyards

831
EMPLOYEES

CUSTOMERS

175,870
total customers

RESIDENTIAL

157,540

COMMERCIAL/INDUSTRIAL

18,330

TACOMA CITY LIMITS



381,000 total people served, approximately

AVERAGE HOUSEHOLD USE

31.4
kWh PER DAY
11,494
kWh PER YEAR

Daily Annually

2015	31	11,315
2014	33	12,029
2013	34	12,490
2012	34	12,583

CONSERVATION

The utility relies on conservation, as opposed to other, more expensive power sources.

45.8 MILLION kWh
SAVED
13.2 residential
32.6 commercial

\$19.1 MILLION
INVESTED
\$9.4 million
PAID BY TACOMA POWER
\$9.7 million
PAID BY CUSTOMERS

ENVIRONMENT

WHAT WE DID TO PROTECT LAND AND WATER

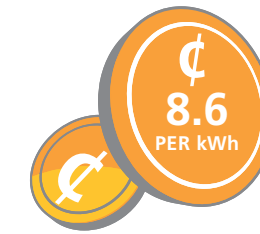
- Created 100 habitat trees for cavity-nesting birds at Cushman
- Provided 60 wood duck nesting boxes on Nisqually and Cushman wildlife lands
- Provided 17 bat roosting boxes on Nisqually and Cushman wildlife lands

- Thinned 111 acres of dense forest on Cushman wildlife lands and 362 acres on Cowlitz wildlife lands
- Observed osprey activity at two of three of the nesting platforms at Cushman



RATES

We are proud to say that our rates are among the lowest in the region.



kWh
=
kilowatt-hour

Seattle City Light

\$91 month
\$1,092 year

Snohomish PUD

\$93 month
\$1,116 year

Puget Sound Energy

\$98 month
\$1,176 year



BASED ON TYPICAL HOME WITHOUT ELECTRIC HEAT

FINANCIAL

As a result of careful financial, ratemaking and risk management processes, our bond ratings are stable, which helps Tacoma Power borrow money at low interest rates. That helps keep rates low.

Value of our fixed assets
\$1.034 BILLION
Total operating revenue
\$418.6 MILLION

BOND RATINGS
Fitch AA-
Moody's Aa3
Standard & Poor's AA

TAXES WE PAY
Tacoma Gross Earnings
\$30.5 MILLION
Federal (Social Security)
\$6.8 MILLION
State
\$16.9 MILLION
Other cities' and counties' fees
\$6.7 MILLION
Taxes as a percent of operating revenue
14.5%

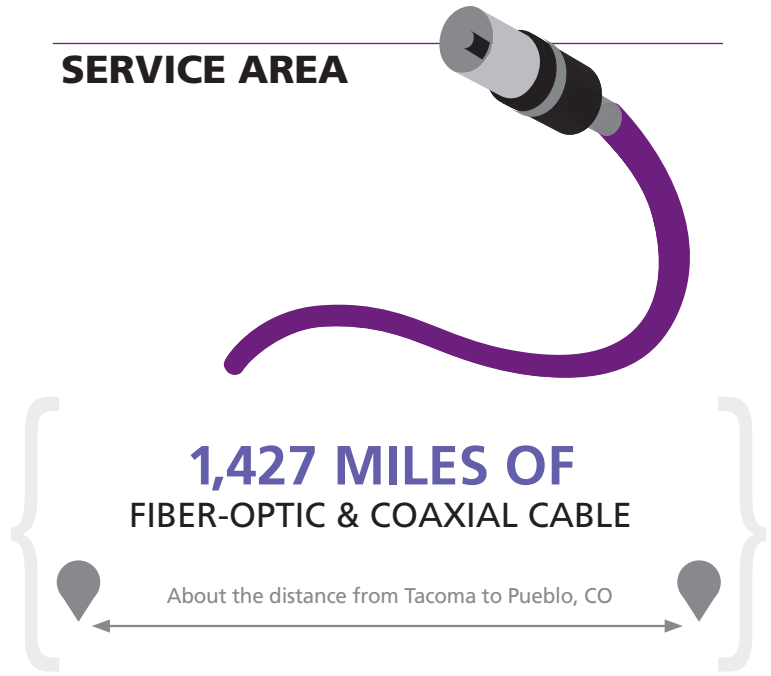


NOTEWORTHY

- Won National Hydropower Association award recognizing innovative Lake Cushman floating juvenile fish collector
- Built and sold out the utility's first community solar project, consisting of four, 75-kilowatt solar arrays on its warehouse roof; customers who bought solar units receive an annual Washington state solar production incentive payment, as well as payment for the electricity produced from the project
- Two employees who created Tacoma Power's video chat inspection program earned the Leadership in Energy Efficiency Award for Innovation from the Northwest Energy Efficiency Alliance

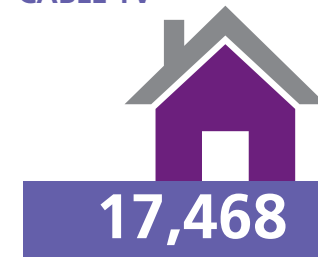
Click! Network, part of Tacoma Power, is one of the largest municipally owned telecommunications systems in the country. **Launched in 1998, Click! brought Tacoma and the surrounding area competition in the cable television market.**

SERVICE AREA



CUSTOMERS

CABLE TV



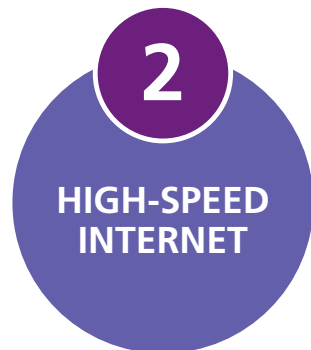
HIGH-SPEED INTERNET



CABLE CHANNELS



INTERNET SERVICE PROVIDERS



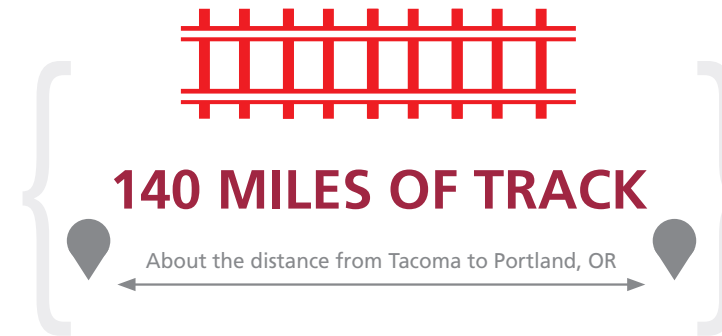
- Rainier Connect
- Advanced Stream



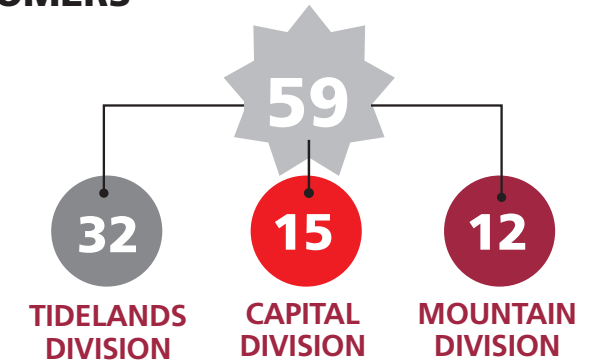
It was a year of growth for Tacoma Rail, with 8% more intermodal and 10% more commercial traffic than 2015. The utility also continued to meet its primary goal of providing efficient, cost-effective rail service.



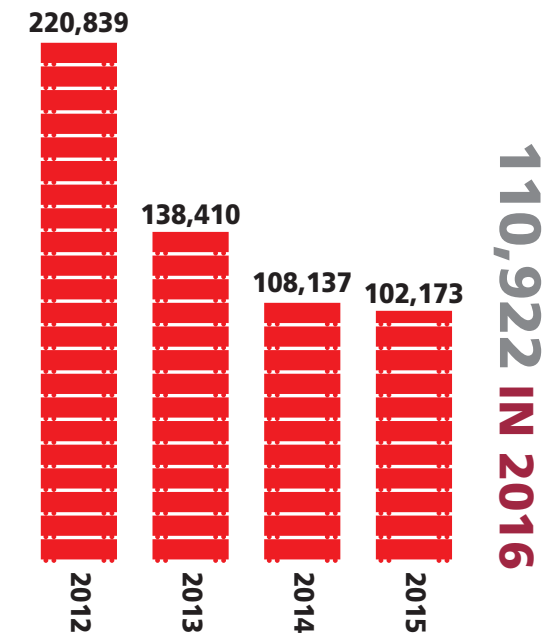
SERVICE AREA



CUSTOMERS



CARS SWITCHED



FINANCIAL

Value of our fixed assets
\$28.2 MILLION
Total operating revenue
\$30.8 MILLION

TAXES WE PAY

Tacoma Gross Earnings
\$2.6 MILLION
Federal (Railroad retirement & Unemployment)
\$2.1 MILLION
State
\$844,984
Taxes as a percent of total revenue
18.07%



NOTEWORTHY

- Repowered a 1956 locomotive that has been in Tacoma Rail's fleet since 1998



ONE OF THE BUSIEST
SHORT-LINE RAILROADS
IN THE COUNTRY
IN TERMS OF VOLUME AND FREIGHT



TACOMA PUBLIC UTILITIES SERVICE AREA

