
NOVEMBER

TACOMA RAIL

2020

**INTERIM
FINANCIAL
REPORT**



Public Utility Board

BRYAN FLINT

Chair

MARK PATTERSON

Vice-Chair

CHRISTINE COOLEY

Secretary

CARLOS M. WATSON

Member

JOE BUSHNELL

Member

JACKIE FLOWERS

Director of Utilities

DALE KING

Rail Superintendent

ANDREW CHERULLO

Finance Director

DEPARTMENT OF PUBLIC UTILITIES

CITY OF TACOMA

This page intentionally left blank.

CITY OF TACOMA, WASHINGTON
DEPARTMENT OF PUBLIC UTILITIES, BELT LINE DIVISION
Doing Business As

TACOMA RAIL

TABLE OF CONTENTS

Note: These financial statements are interim, unaudited reports prepared primarily for the use of management. Not all transactions reported in these statements have been recorded on the full accrual basis of accounting or in accordance with generally accepted accounting principles.

Variance analysis: According to Ordinance No. 28688, Fleet Services Fund transferred operating division fleet assets to Power, Rail, and Water for funding flexibility prior to December 31, 2020. Fleet Services Fund maintains the purchasing and maintenance responsibilities. \$23.6 million of Net book value in assets was transferred out from Fleet Services Fund, of which \$15.8 million, \$2.0 million, and \$5.8 million were transferred to Power, Rail, and Water respectively.

Statements of Net Position (Unaudited)	1
Statements of Revenues, Expenses and Changes in Net Position (Unaudited)	3
Summary of Switching Revenues and Switching Activities (Unaudited).....	5
Supplemental Data	8

City of Tacoma, Washington
 Department of Public Utilities
 Tacoma Rail
 Statements of Net Position (Unaudited)
 November 30, 2020 and November 30, 2019

ASSETS	<u>2020</u>	<u>2019</u>
CAPITAL ASSETS		
Road and Equipment Property	\$51,666,565	\$48,190,496
Less Accumulated Depreciation	<u>(26,382,013)</u>	<u>(23,338,113)</u>
Total	25,284,552	24,852,383
Construction Work in Progress	<u>3,699,653</u>	<u>900,670</u>
Net Capital Assets	28,984,205	25,753,053
CURRENT ASSETS		
Cash & Equity in Pooled Investments	15,925,919	13,910,872
Customer Accounts Receivable	3,414,837	5,549,516
Prepayments	1,428,853	846,265
Materials and Supplies Inventory	<u>1,279,846</u>	<u>1,185,833</u>
Total Current Assets	22,049,455	21,492,486
DEFERRED OUTFLOWS		
Deferred Outflows for OPEB	<u>738,535</u>	<u>993,546</u>
TOTAL ASSETS AND DEFERRED OUTFLOW OF RESOURCES	<u><u>\$51,772,195</u></u>	<u><u>\$48,239,085</u></u>

The accompanying notes are an integral part of these financial statements.

NET POSITION AND LIABILITIES	<u>2020</u>	<u>2019</u>
NET POSITION		
Net Investment in Capital Assets	\$25,167,274	\$21,349,814
Unrestricted	<u>4,476,501</u>	<u>3,802,639</u>
TOTAL NET POSITION	29,643,775	25,152,453
LONG-TERM DEBT, NET OF CURRENT MATURITIES		
State Loans	<u>2,996,681</u>	<u>3,582,990</u>
Total Long-Term Liabilities	2,996,681	3,582,990
CURRENT LIABILITIES		
Accounts Payable	592,180	682,391
Customer Deposits	100,000	40,000
Wages Payable	252,758	-
Unemployment and Other Tax Payables	311,354	411,975
Volume Incentive Payable	-	250,000
Current Portion of Long-Term Debt	820,250	820,250
Current Portion of Compensated Absences	<u>123,430</u>	<u>118,329</u>
Total Current Liabilities	2,199,972	2,322,945
LONG-TERM LIABILITIES		
On the Job Injury Reserve	734,386	829,279
Long-Term Portion of Compensated Absences	1,110,871	1,064,965
Pension Withdrawal Liability	2,354,440	2,320,000
OPEB Liability	9,947,627	12,179,967
Incurred but not Reported Claims	<u>417,958</u>	<u>496,684</u>
Total Long-Term Liabilities	14,565,282	16,890,895
TOTAL LIABILITIES	<u>19,761,935</u>	<u>22,796,830</u>
DEFERRED INFLOWS		
Deferred Inflows for OPEB	<u>2,366,485</u>	<u>289,802</u>
TOTAL NET POSITION, LIABILITIES AND DEFERRED INFLOWS	<u><u>\$51,772,195</u></u>	<u><u>\$48,239,085</u></u>

City of Tacoma, Washington
Department of Public Utilities
Tacoma Rail
Statements of Revenues, Expenses and Changes in Net Position (Unaudited)
November 30, 2020 and November 30, 2019

	<u>NOVEMBER 2020</u>	<u>NOVEMBER 2019</u>
OPERATING REVENUES		
Switching Revenues	\$2,218,794	\$2,304,702
Demurrage and Other Operating Revenues	<u>675,076</u>	<u>1,091,600</u>
Total Operating Revenues	2,893,870	3,396,302
 OPERATING EXPENSES		
Maintenance of Way and Structures		
Salaries and Wages	84,052	82,020
Supplies and Expense	333,142	83,580
Mechanical		
Salaries and Wages	203,250	191,134
Supplies and Expense	400,756	523,925
Operations		
Salaries and Wages	757,538	852,523
Supplies and Expense	94,012	115,051
Administration		
Salaries and Wages	225,693	214,617
Supplies and Expense	259,855	277,398
Taxes - State	47,987	42,989
Depreciation	<u>148,234</u>	<u>162,407</u>
Total Operating Expenses	2,554,519	2,545,644
 Net Operating Income	 339,351	 850,658
 NON-OPERATING REVENUES (EXPENSES)		
Interest Income	14,890	24,651
Miscellaneous	<u>27,169</u>	<u>76,131</u>
Total Non-Operating Revenues	42,059	100,782
 Contributions - Grants	 <u>-</u>	 <u>-</u>
Total Contributions	-	-
 Transfers		
City of Tacoma Gross Earnings Tax	(234,831)	(279,767)
Transfers to (from) other funds	<u>1,955,533</u>	<u>-</u>
Total Transfers	1,720,702	(279,767)
 CHANGE IN NET POSITION	 <u>\$2,102,112</u>	 <u>\$671,673</u>
 TOTAL NET POSITION - JANUARY 1		
 TOTAL NET POSITION - NOVEMBER 30		

YEAR TO DATE			
NOVEMBER 30 2020	NOVEMBER 30 2019	2020/2019 VARIANCE	PERCENT CHANGE
\$24,384,749	\$27,148,108	(\$2,763,359)	-10.2%
6,157,434	6,394,537	(237,103)	-3.7%
<u>30,542,183</u>	<u>33,542,645</u>	<u>(3,000,462)</u>	-8.9%
969,154	935,614	33,540	3.6%
1,540,219	1,153,860	386,359	33.5%
2,178,314	2,103,908	74,406	3.5%
4,298,178	4,624,325	(326,147)	-7.1%
8,931,997	9,296,239	(364,242)	-3.9%
1,306,108	1,251,011	55,097	4.4%
2,655,279	2,375,135	280,144	11.8%
2,885,348	3,731,071	(845,723)	-22.7%
469,863	461,372	8,491	1.8%
<u>1,635,342</u>	<u>1,692,583</u>	<u>(57,241)</u>	-3.4%
26,869,802	27,625,118	(755,316)	-2.7%
3,672,381	5,917,527	(2,245,146)	-37.9%
123,733	312,758	(189,025)	-60.4%
790,548	847,150	(56,602)	-6.7%
<u>914,281</u>	<u>1,159,908</u>	<u>(245,627)</u>	-21.2%
24,027	33,439	(9,412)	-28.1%
<u>24,027</u>	<u>33,439</u>	<u>(9,412)</u>	-28.1%
(2,523,592)	(2,772,134)	248,542	9.0%
<u>1,455,533</u>	-	<u>1,455,533</u>	N/A
(1,068,059)	(2,772,134)	1,704,075	61.5%
3,542,630	4,338,740	(796,110)	-18.3%
<u>26,101,145</u>	<u>20,813,713</u>		
<u>\$29,643,775</u>	<u>\$25,152,453</u>		

These statements should be read in conjunction with the Notes to the Financial Statements contained in the previous year-end Financial Report.

City of Tacoma, Washington
 Department of Public Utilities
 Tacoma Rail
 Summary of Switching Revenues and Switching Activities (Unaudited)
 November 30, 2020 and November 30, 2019

	November 2020	November 2019
	<u> </u>	<u> </u>
SWITCHING REVENUES		
LINE HAULS--INTERMODAL	\$826,716	\$805,311
LINE HAULS--COMMERCIAL	1,195,986	1,297,230
LINE HAULS--CAPITAL DIVISION	32,490	38,760
MISCELLANEOUS SWITCHES	<u>163,602</u>	<u>163,401</u>
TOTAL SWITCHING REVENUES	<u><u>\$2,218,794</u></u>	<u><u>\$2,304,702</u></u>
SWITCHING ACTIVITIES (CARS)		
LINE HAULS--INTERMODAL	5,417	4,731
LINE HAULS--COMMERCIAL	2,212	2,462
LINE HAULS--CAPITAL DIVISION	57	68
MISCELLANEOUS SWITCHES	<u>764</u>	<u>481</u>
TOTAL CARS SWITCHED	<u><u>8,450</u></u>	<u><u>7,742</u></u>

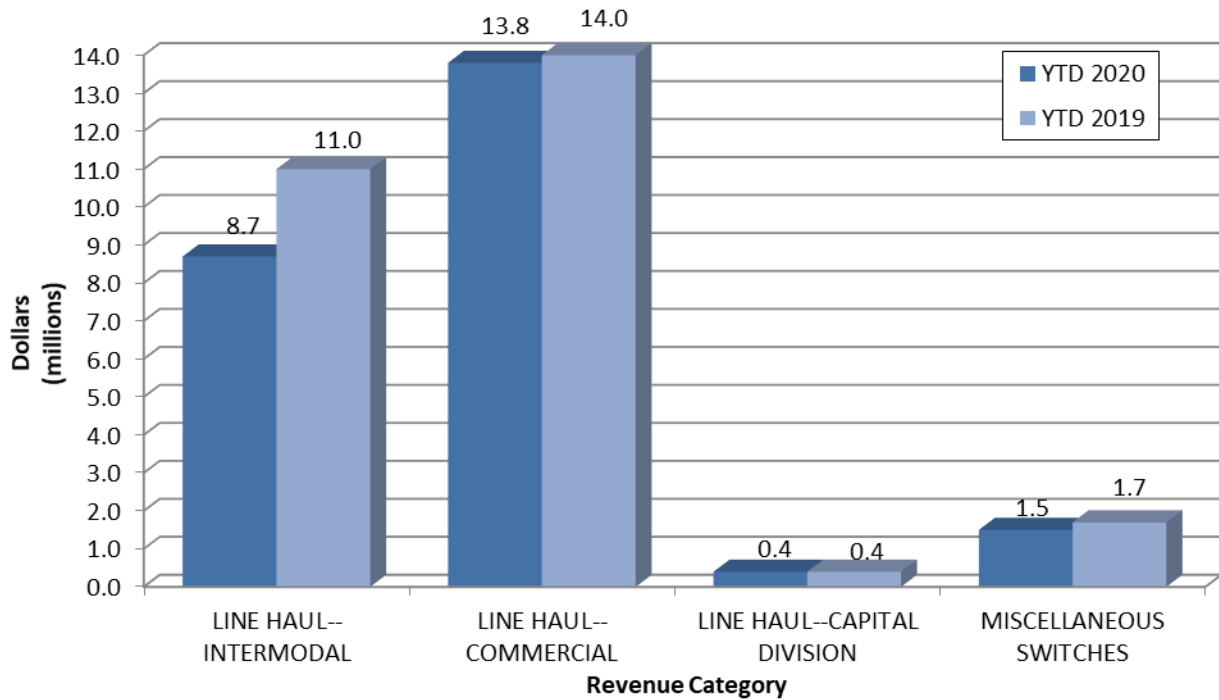
YEAR TO DATE			
November 30, 2020	November 30, 2019	2020/2019 VARIANCE	PERCENT CHANGE
\$8,678,469	\$10,952,715	(\$2,274,246)	-20.8%
13,765,204	14,031,770	(266,566)	-1.9%
391,020	425,790	(34,770)	-8.2%
<u>1,550,056</u>	<u>1,737,833</u>	<u>(187,777)</u>	-10.8%
<u>\$24,384,749</u>	<u>\$27,148,108</u>	<u>(\$2,763,359)</u>	-10.2%
52,495	64,702	(12,207)	-18.9%
26,031	28,777	(2,746)	-9.5%
686	747	(61)	-8.2%
<u>8,260</u>	<u>10,381</u>	<u>(2,121)</u>	-20.4%
<u>87,472</u>	<u>104,607</u>	<u>(17,135)</u>	-16.4%

This page intentionally left blank.

Supplemental Data

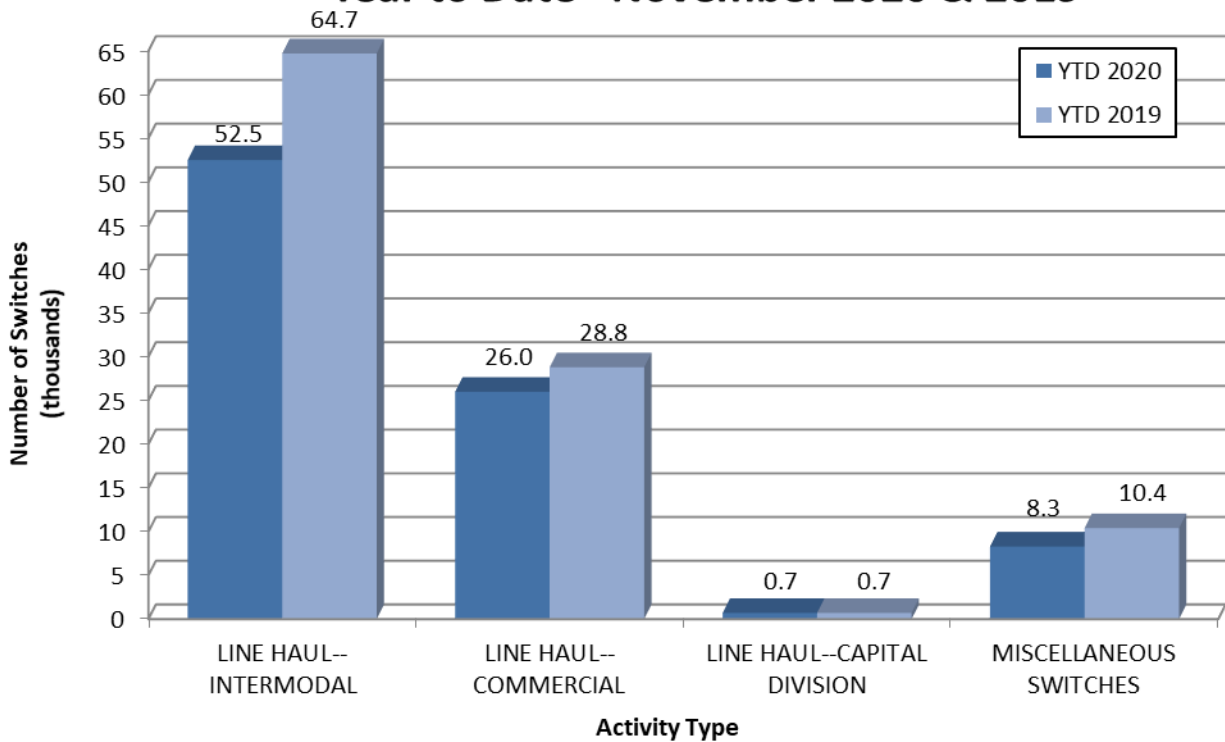
SWITCHING REVENUES

Year to Date - November 2020 & 2019

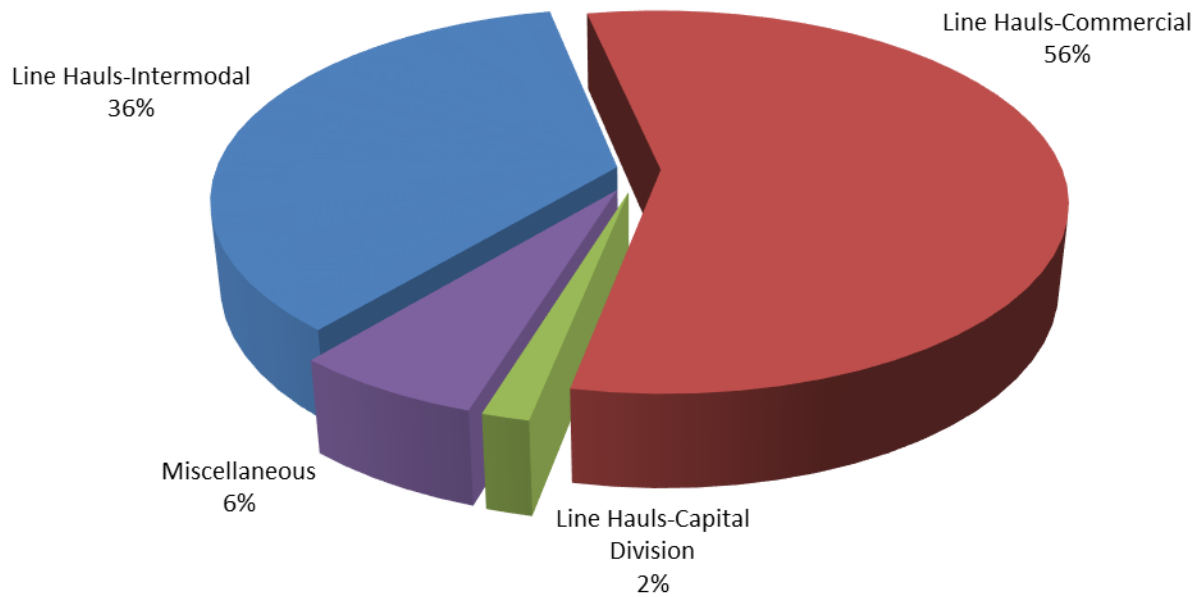


SWITCHING ACTIVITIES

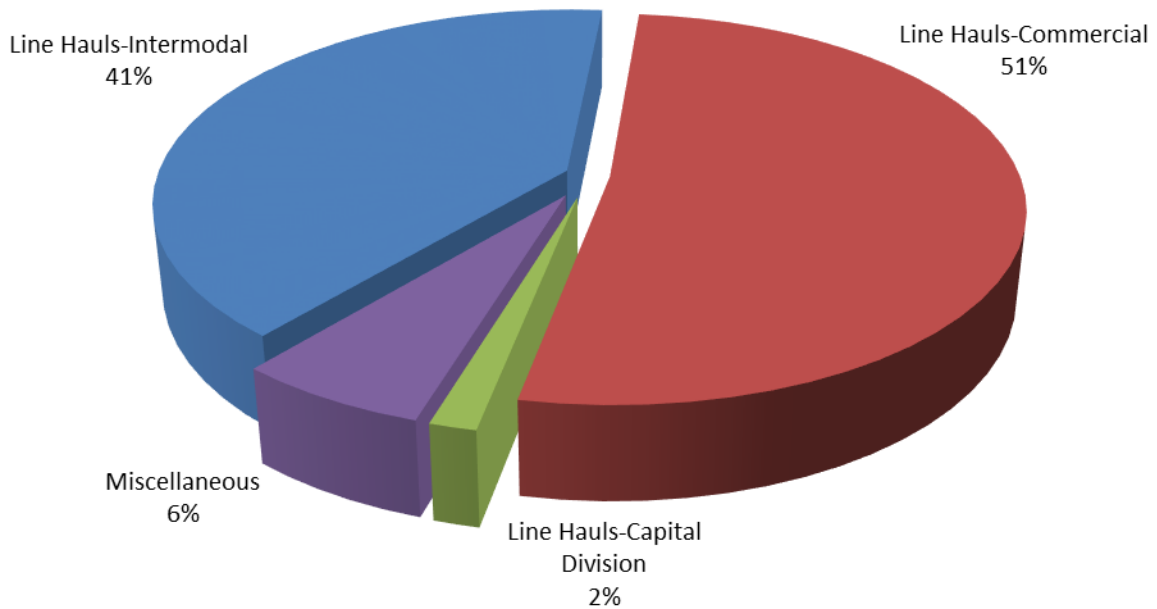
Year to Date - November 2020 & 2019



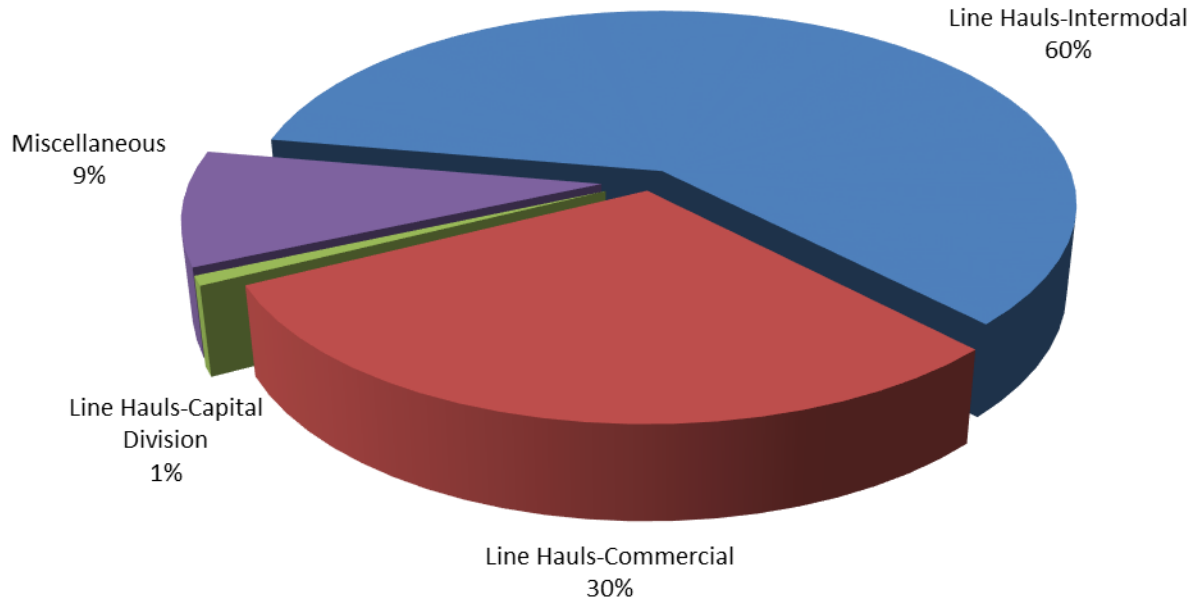
SWITCHING REVENUES Year to Date - November 2020 (\$24,384,749)



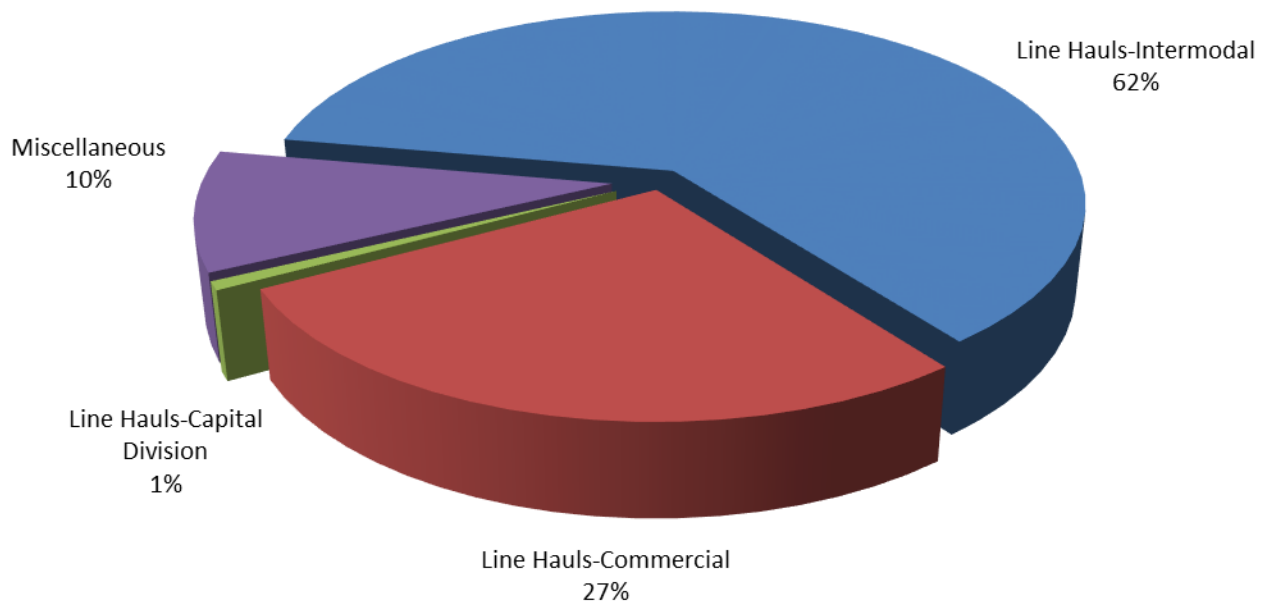
SWITCHING REVENUES Year to Date - November 2019 (\$27,148,108)



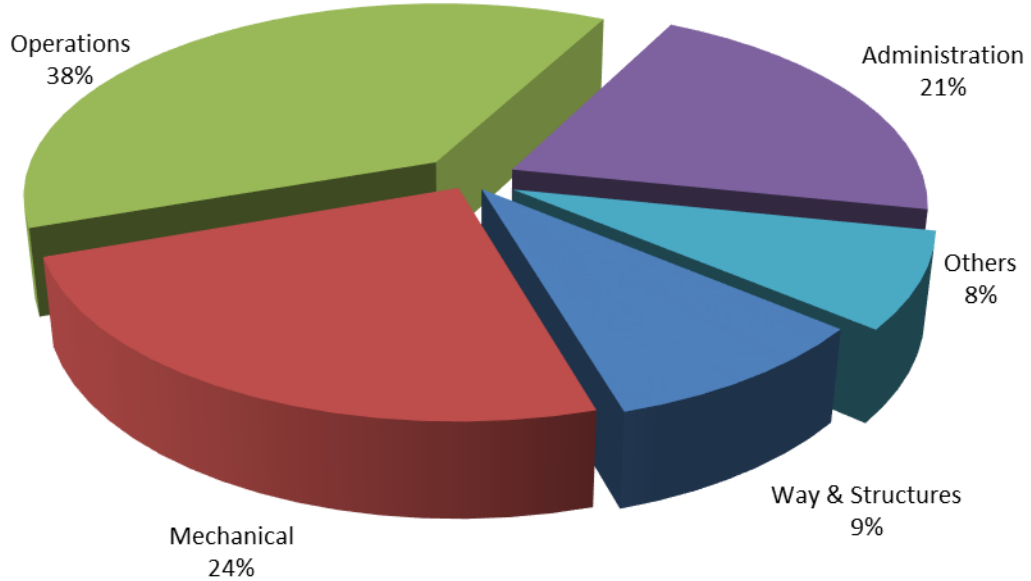
SWITCHING ACTIVITY Year to Date - November 2020 (87,472 cars)



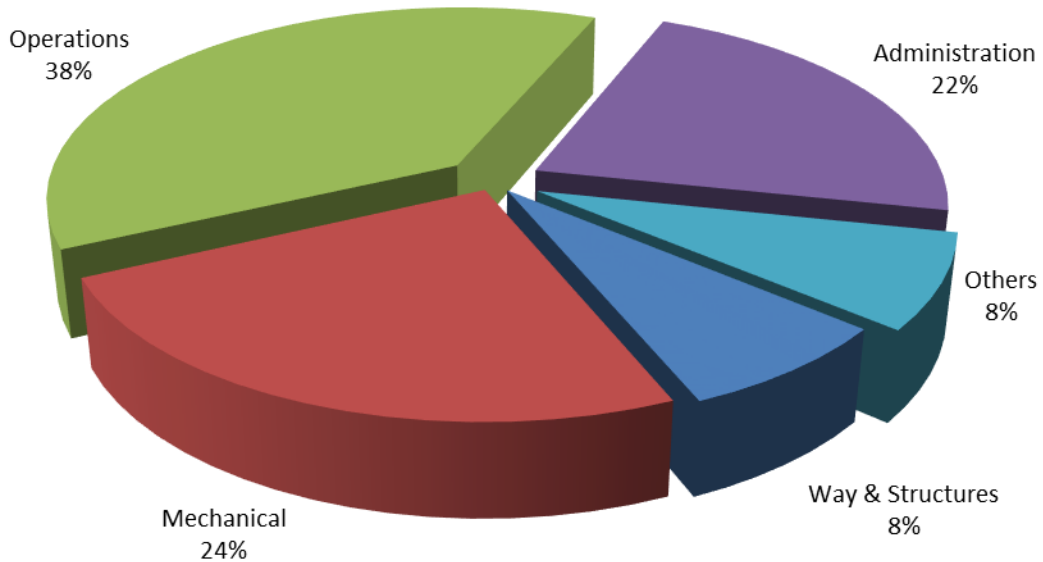
SWITCHING ACTIVITY Year to Date - November 2019 (104,607 cars)



TOTAL OPERATING EXPENSES
Year to Date - November 2020 (\$26,869,802)



TOTAL OPERATING EXPENSES
Year to Date - November 2019 (\$27,625,118)





The City of Tacoma does not discriminate on the basis of disability in any of its programs, activities, or services. To request this information in an alternative format or to request a reasonable accommodation, please contact the City Clerk's Office at (253) 591-5505. TTY or speech to speech users please dial 711 to connect to Washington Relay Services.